



# MINISTRY OF HEALTH

## THE WEEKLY EPIDEMIOLOGICAL BULLETIN

**WEEK 1: 4<sup>th</sup> Jan -10<sup>th</sup> Jan 2021**

Dear Reader,

We are pleased to share our 1<sup>st</sup> weekly epidemiological bulletin for the year 2021. This epidemiological bulletin serves to inform all stakeholders at district, national, and global levels on disease trends, public health surveillance and interventions undertaken in detecting, preventing and responding to public health events in Uganda on a weekly basis.

### In this issue, we showcase the following updates

- ◆ Routine Surveillance
  - ◆ Reported suspected epidemic prone diseases
  - ◆ Reporting rates across the country
- ◆ Event Based surveillance
- ◆ Epidemiology
- ◆ Public health emergencies in neighbor countries

*For comments please contact: Dr. Allan Muruta, Commissioner, Department of Integrated Epidemiology, Surveillance and Public Health Emergencies - MoH; P.O BOX 7272 Kampala, Tel: 080010066 (toll free); Email: [esd@health.go.ug](mailto:esd@health.go.ug) or [esdugandazz@gmail.com](mailto:esdugandazz@gmail.com)*

## ROUTINE SURVEILLANCE

### Reported Suspected Epidemic Prone Diseases

- Malaria had the highest number of suspected cases across the country.
- Malaria top five districts include;
  - Yumbe with 7458 cases
  - Kamuli with 5217 cases
  - Adjuman with 5048 cases
  - Lamwo with 3990 case
  - Nebbi with 3922 cases
- Typhoid was the second most suspected condition with Kampala (212) and Luwero (74) having the highest numbers
- Suspected rabies (Animal bites) was the third most suspected with Kampala (16) and Masindi (16) having the highest number of cases
- Hepatitis B was the fourth most reported condition with 125 cases mostly from Kampala (68) and Luuka (21)
- The other conditions reported during week 1 are presented in table 1

Tab 1: Suspected Cases of epidemic prone Diseases,

Conditions	Cases	Deaths	CFR(%)
AFP	5	0	0.0
AEFIs	2	0	0.0
Animal bites	219	0	0.0
Bacterial Meningitis	3	0	0.0
Cholera	0	0	0.0
Guinea Worm	0	0	0.0
Malaria	176, 512	21	0.01
Dysentery	78	0.0	0.0
Hepatitis B	125	0	0.0
Measles	31	0	0.0
NNT	0	0	0.0
Plague	0	0	0.0
Other Suspected VHF	0	0	0.0
SARI	109	0	0.0
Typhoid fever	1460	0	0.0
Yellow fever	0	0	0.0
Anthrax	0	0	0.0
Leprosy	0	0	0.0
RR T.B	1	0	0.0
Brucellosis	94	0	0.0
HAT	0	0	0.0
Influenza (All subtypes)	11	0	0.0

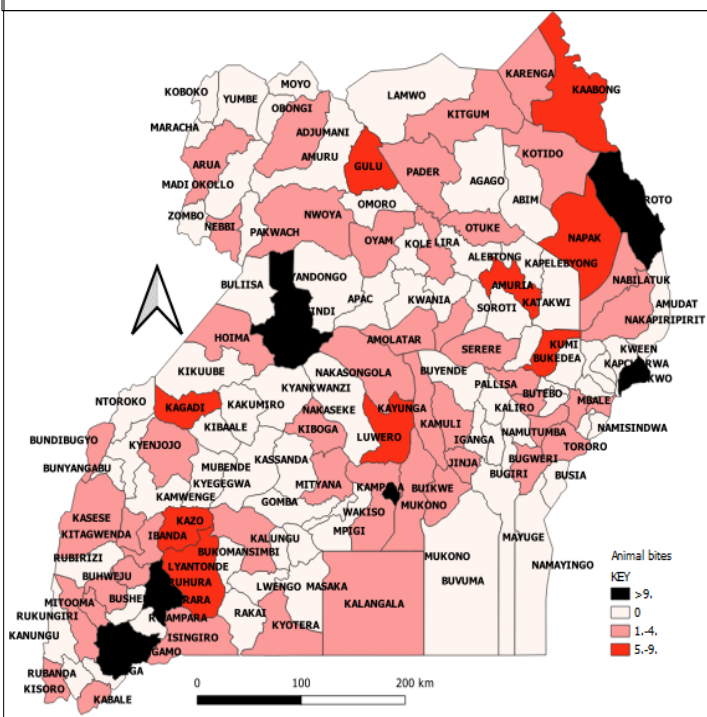
**Table 2: Maternal and Perinatal Deaths**

District	Health Facility	Maternal Deaths	District	Macerated Deaths	District	Fresh Still Deaths	District	Early Neonatal Deaths
Hoima	Hoima RRH	1	Kampala	9	Hoima	4	Hoima	6
	Azur HC IV	1	Mityana	4	Kampala	4	Kampala	4
Amolatar	Amai community Hosp	1	Yumbe	3	Lira	3	Lamwo	3
Kyenjojo	St. Thereza Rwibaale HC IV	1	Kamuli	3	Bududa	3	Busia	3
Rukungiri	CoU Kisiizi Hosp	1	Ntungamo	3	Kagadi	3	Napak	2
Kabarele	Fortportal RRH	1	Kiboga	3	Kiboga	3	Rukungiri	2
			Kazo	2	Wakiso	3	Apac	2
			Kabale	2	Mbale	2	Maracha	1
			Nebbi	2	Pallisa	2	Kyotera	1
			Kisoro	2	Kabale	2	Lira	1
			Sheema	2	Budaka	2	Nabilatuk	1
			Luwero	2	Kikuube	2	Amolatar	1
			Kabarole	2	Nebbi	2	Karenga	1
			Pader	2	Bushenyi	2	Bugweri	1
			Lira	1	Kamwenge	2	Bududa	1
			Kaabong	1	Kasese	2	Zombo	1
			Bugweri	1	Kaabong	1	Koboko	1
			Others	16	Others	2	others	5

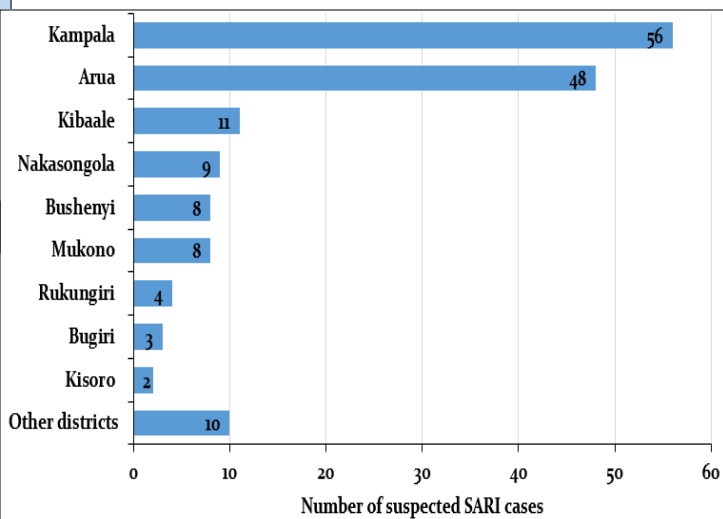
**Suspected rabies (dog bites)**

Animal bites were reported across the country with Moroto, Masindi (16), Bukwo (10), Kampala (16), Ntungamo (13) and Mbarara (10) reporting the highest number of cases.

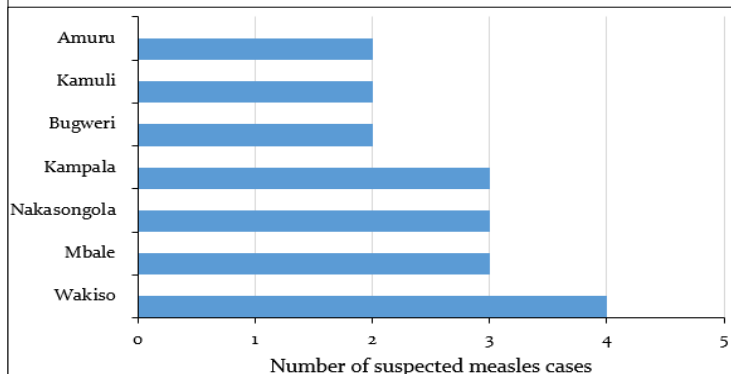
**Fig 1: Distribution of suspected rabies (dog bites)**



**Fig 2: Suspected Severe Acute Respiratory Illnesses, week 1**



**Fig 3: Suspected Measles cases**



# WEEKLY SURVEILLANCE REPORTING RATES

Fig 4: Average of reporting rates

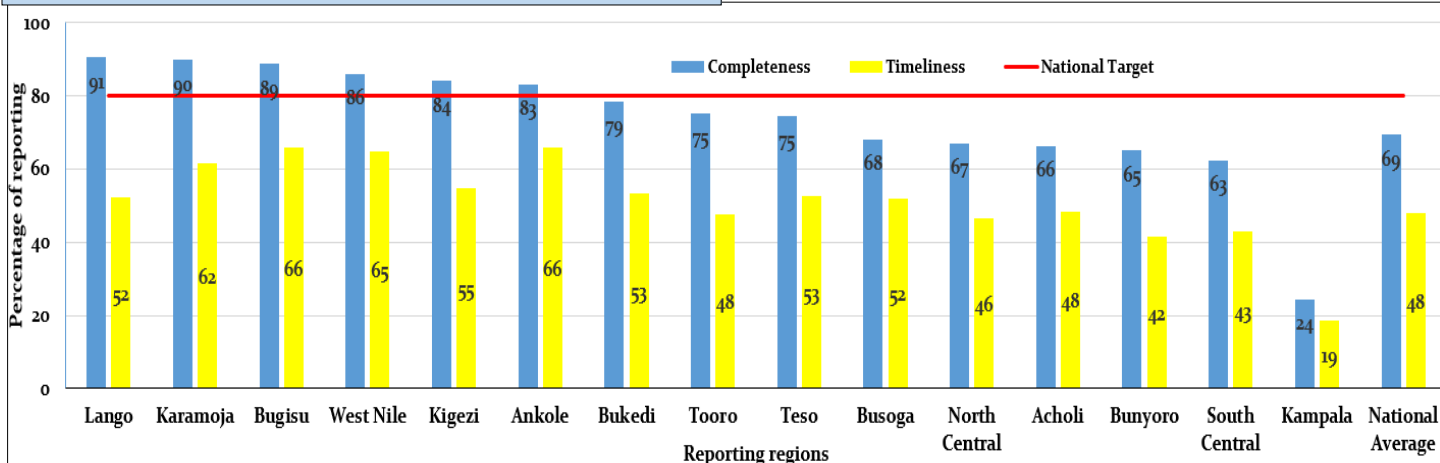


Fig 5a: Completeness of reporting

Fig 5b: Timeliness of reporting

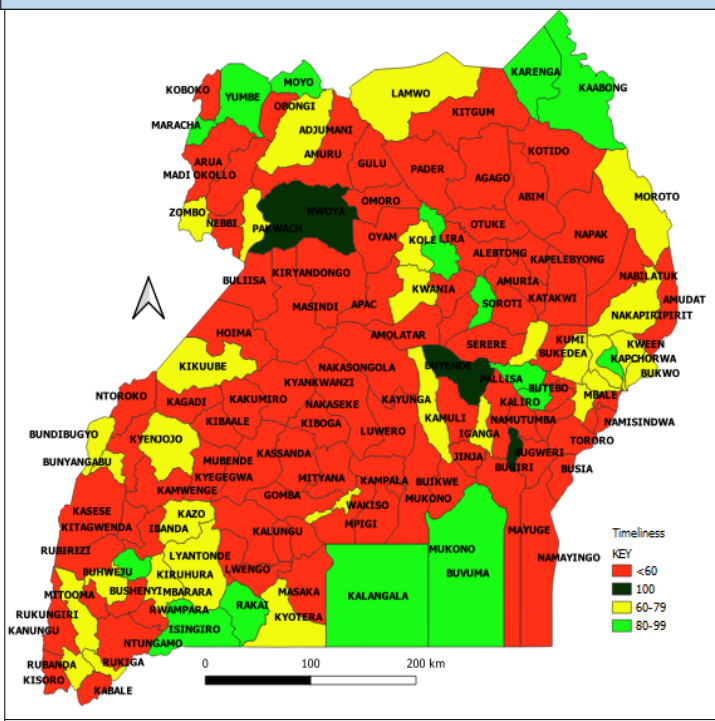
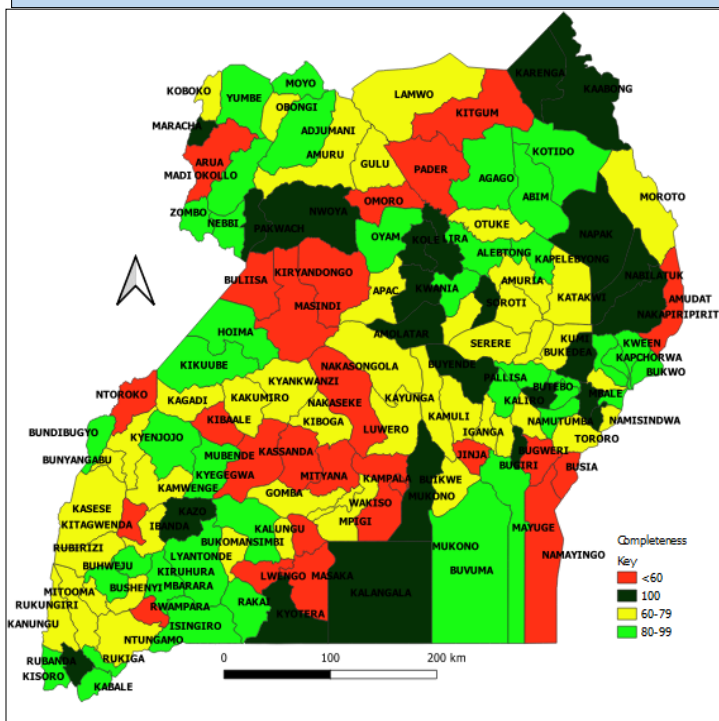
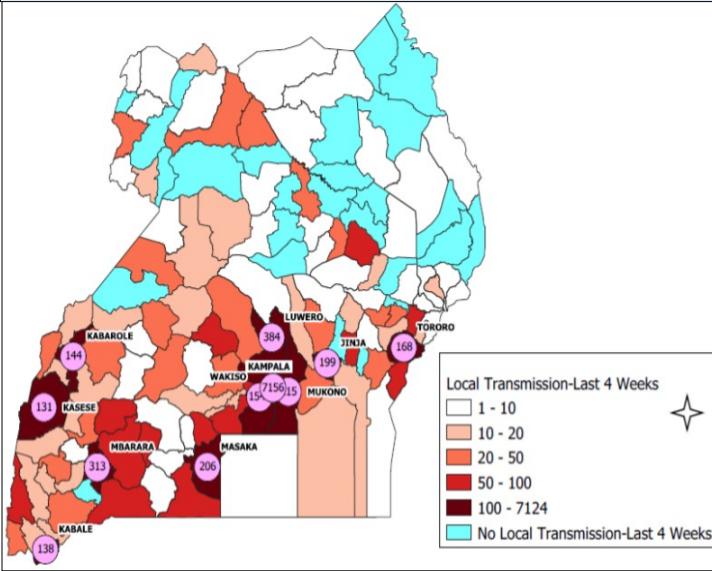


Table 3: Public Health Emergencies Activations

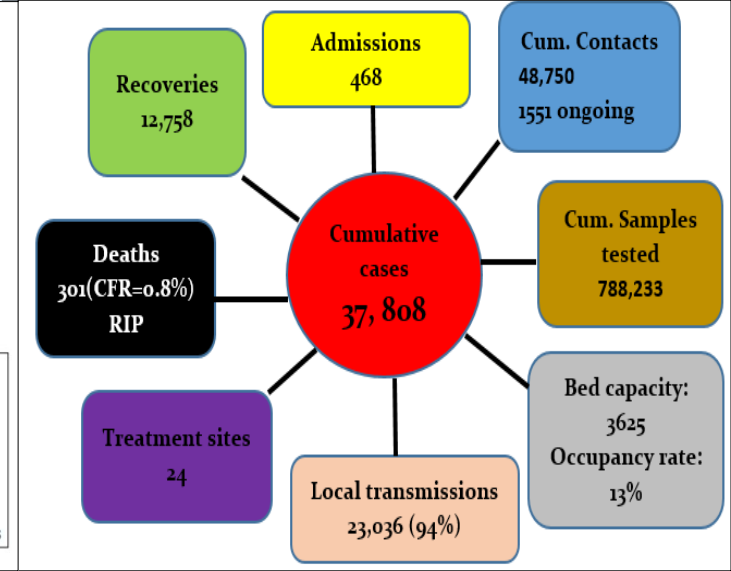
PHE	Dates	Location	Level of activation	#Active cases	#Confirmed cases	Deaths
eMTCT HIV	13 Jul to date	Country wide	Response	Unknown	Un known	Unknown
Tuberculosis	14/12/19 to date	Lango, Karamoja, Acholi and Kampala	Response	Un known	356	Un Known
COVID-19	21/3/20 to date	Countrywide	Response	468	37808	301
Rift Valley Fever	10/12/20 to date	Kampala	Alert	1	1	1
Malaria	2/9/19 to date	81 Districts	Response	Un known	Un known	Unknown

# EPIDEMIOLOGY SECTION

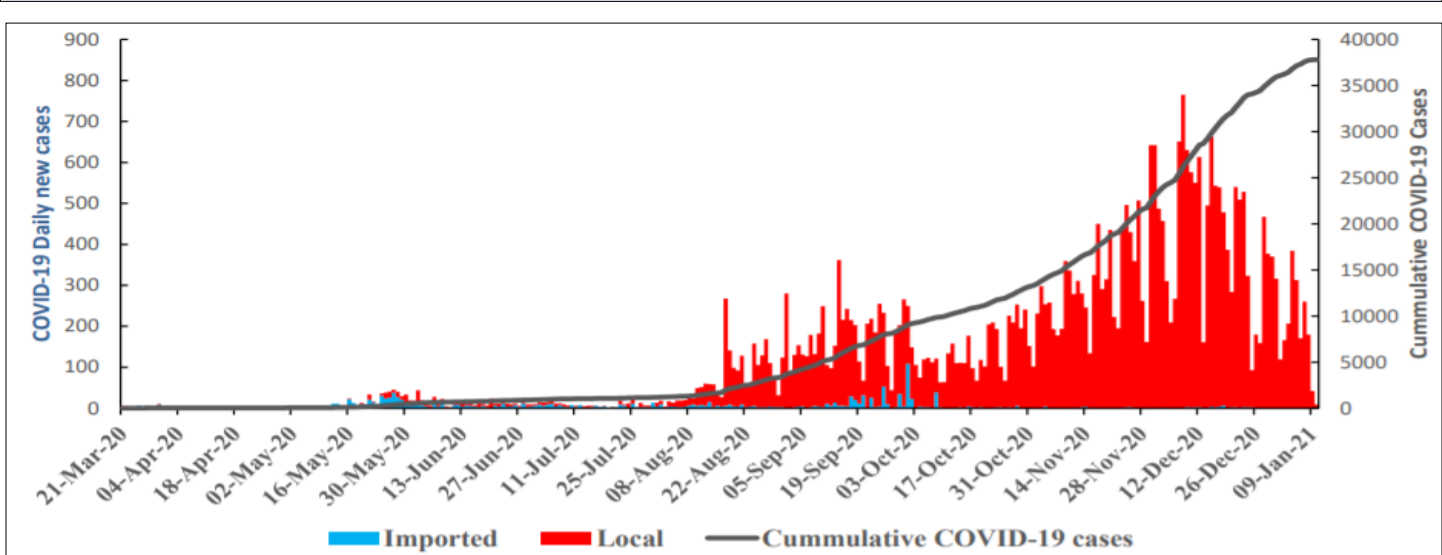
**Fig 6: COVID-19 Local Transmission (n=23,036)**



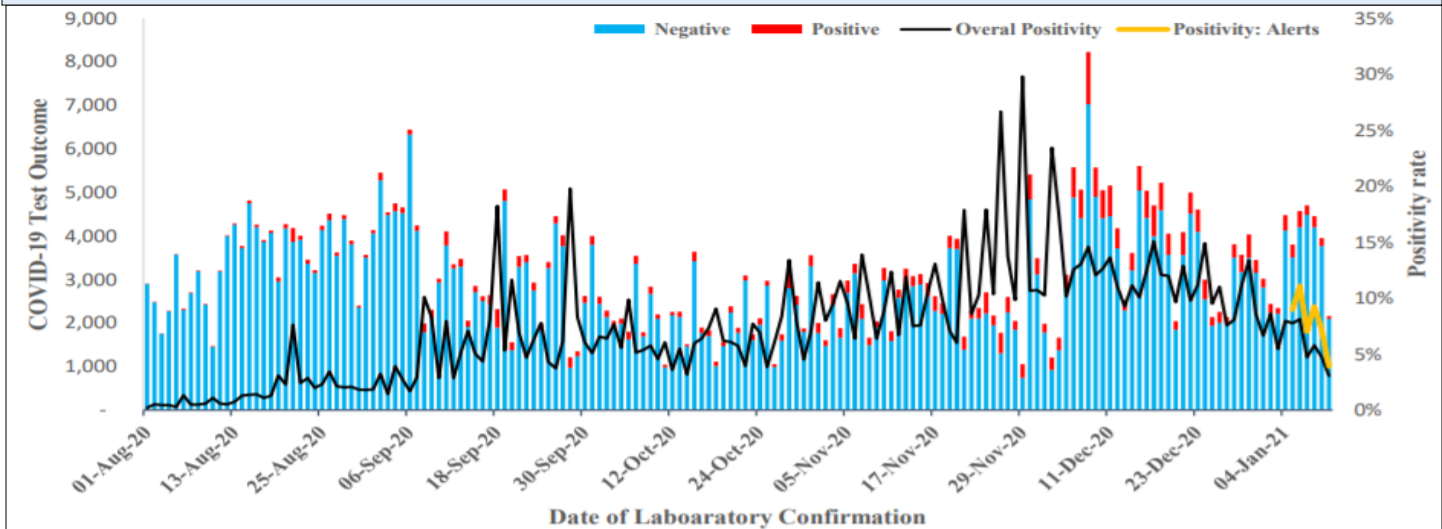
**Fig 7: COVID-19 summary statistics**



**Fig 8: Epidemic curve of COVID-19 Pandemic in Uganda, March 2020 to January 11-2021 (N=37,808)**



**Fig 9: COVID-19 Testing outcomes in Uganda, March 2020 to January 11-2021 (N=788,233)**



Public health emergencies in neighboring countries				Recommendations
Country	Condition	No. of Cases	No. of deaths	
DRC	Cholera	18504	301	<ul style="list-style-type: none"> <li>Veterinary officers at all levels are encouraged to sensitize communities on how to handle dogs. Owners of dogs should be sensitized to vaccinate their animals</li> <li>UNEPI reminds and encourages all the districts to carry out active search for AFP, NNT, EAFI and measles cases .</li> <li>Maternal deaths and perinatal deaths audits should be conducted to address these deaths</li> <li>MoH is dedicated to providing relevant COVID-19 PPE and therefore encourages all HWs to adhere to SOPs</li> <li>Mortality surveillance for public health emergencies under activated for response should be strengthened</li> <li>The National Task force should conduct resource mobilization for TB response</li> <li>Baylor Uganda and IDI are requested to address the rampant late reporting rates in West Nile, Bunyoro and</li> </ul>
	COVID 19	19158	610	
	EVD	128	53	
	Measles	70899	1026	
	Monkey pox	6231	203	
	Plague	124	17	
	Poliomyelitis	183	0	
Kenya	Cholera	711	13	
	COVID 19	98271	1710	
	Leishmania	305	7	
	Measles	626	2	
Rwanda	COVID 19	9630	120	
TZ	COVID 19	509	21	
South Sudan	COVID-19	3649	63	
	Hepatitis E	412	5	
	Measles	916	2	

### Acknowledgement

- MOH acknowledges all efforts made by all districts and health facilities in surveillance activities
- The Ministry appreciated the partner initiatives across the country

### Editorial team :

Allan Muruta, Carol Kyoziira, Godfrey Bwire , David Muwanguzi, Opolot John, Anne Nakinsige, Eldard Mabumba, Benard Lubwama, Leocadia Kwagonza, Harriet Mayinja, Specioza Katusiime, Maureen Nabatanzi, Apolo Ayebale, Freda Aceng, Godfrey Ekuka, Emma Arinaitwe, Job K., Robert Kato, Joyce Nguna, Milton Wetaka, Joshua Kayiwa, Jayne Tusiime.

*Remember, your feedback is important to us.*

**COVID -19 Prevention is an individual responsibility. Be in charge! Be responsible! Take action!**

