



MINISTRY OF HEALTH

THE WEEKLY EPIDEMIOLOGICAL BULLETIN

WEEK 23: 1st-7th June 2020

Dear Reader,

We are pleased to share our 23rd weekly epidemiological bulletin for the year 2020.

This epidemiological bulletin serves to inform all stakeholders at district, national, and global levels on disease trends, public health surveillance and interventions undertaken in detecting, preventing and responding to public health events in the country on a weekly basis.

In this issue, we bring you the following among others

- ◆ National and district weekly surveillance reporting
- ◆ Suspected epidemic prone diseases.
- ◆ Uganda updates on COVID-19
- ◆ Regional reporting rates
- ◆ Public health events in border countries

For comments please contact: Dr. Allan Muruta, Commissioner, Department of Integrated Epidemiology, Surveillance and Public Health Emergencies - MoH; P.O BOX 7272 Kampala, Tel: 080010066 (toll free); Email: esd@health.go.ug or esduganda22@gmail.com

Current public health threats

COVID-19 as of 18th June 2020

- 741 Cumulative cases of COVID-19 confirmed cases in the country among Ugandan nationals
- 979 Non Ugandan Nationals confirmed
- 160,738 specimens collected and tested
- 299 cumulative total recoveries
- 406 cases on admission
- 1272 contacts on follow-up

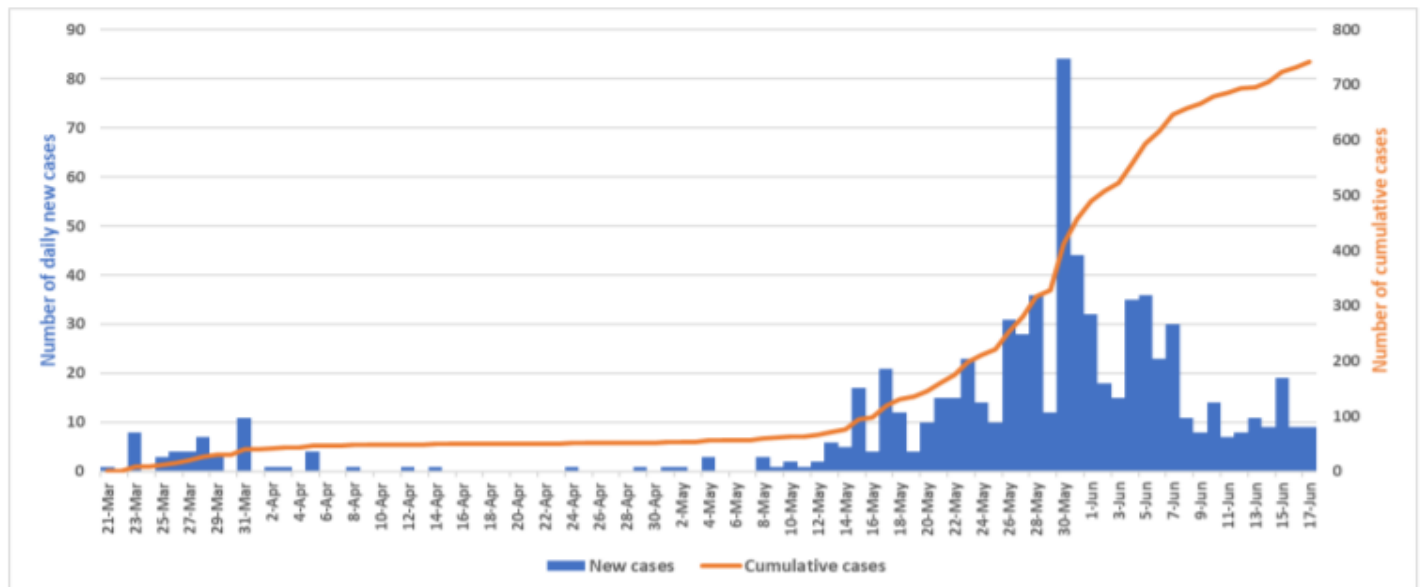
Cholera outbreak in Moroto and Nabiratuk

- 378 cases with 2 deaths in Moroto District
- 392 cases with 3 confirmed in Nabiratuk
- 13 cases- patents still on admission
- Eleven parishes have reported cases
- Loputuk parish has the highest number of case- patients in Moroto
- Kamaturu (135), Nasinyonoit (124) , Narisae (142) Parishes are most affected in Nabiratuk
- Reactive Oral Cholera vaccination was implemented

Ebola Viral Disease (EVD) preparedness

- Enhanced surveillance currently ongoing .

Fig 2: Epidemic Curve of COVID-19 as of 18th June (741)



Priority Diseases

The data presented in table 1 consists of suspected cases. The data shows high numbers water borne diseases such as; typhoid, Malaria, Cholera (in Moroto District) dysentery in different parts of the country.

Tab 1: Suspected Cases of epidemic prone Diseases, wk 23

Conditions	Cases	Deaths	CFR(%)
AFP	5	0	0.0
AEFIs	2	0	0.0
Animal bites	186	1	0.0
Bacterial Meningitis	3	0	0.0
Cholera	52	1	1.6
Dysentery	61	0	0.0
Guinea Worm	0	0	0.0
Malaria	44635	54	0.4
Hepatitis B	62	0	1.8
Measles	62	0	0.0
NNT	0	0	0.0
Plague	0	0	0.0
Other Suspected	0	0	0.0
VHFs	0	0	0.0
SARI	78	0	0.0
Typhoid fever	765	0	0.0
Yellow fever	0	0	0.0
Anthrax	0	0	0.0
Leprosy	1	0	0.0
RR T.B	6	0	0.0

Data source: DHIS2

Severe Acute Respiratory Infection (SARI), Viral Haemorrhagic Fevers (VHF), Neonatal Tetanus (NNT), Tuberculosis (T.B), Acute Flaccid Paralysis (AFP), Adverse Events Following Immunisation

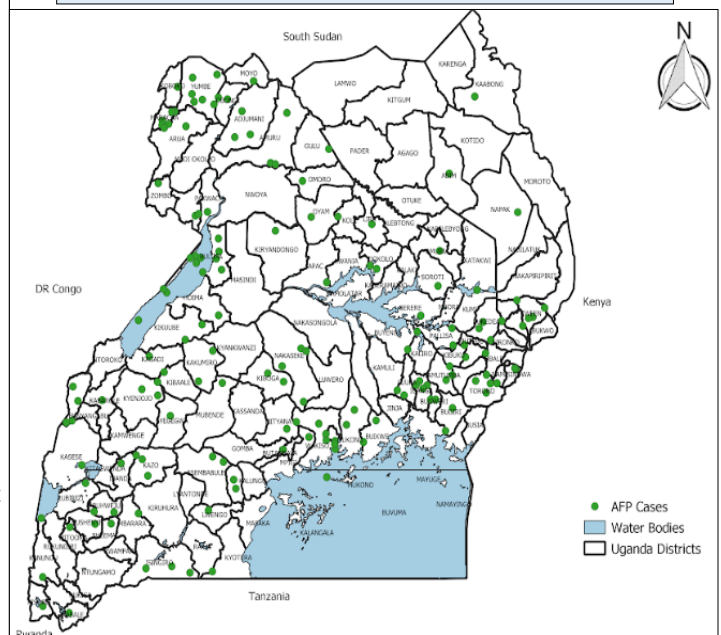
Measles (Confirmed cases)

- Cumulatively, 66/135 districts have investigated at least one suspected measles case
- Of the 64 districts, 45% have had at least one positive IgM case.

Acute Flaccid Paralysis (AFP) Surveillance

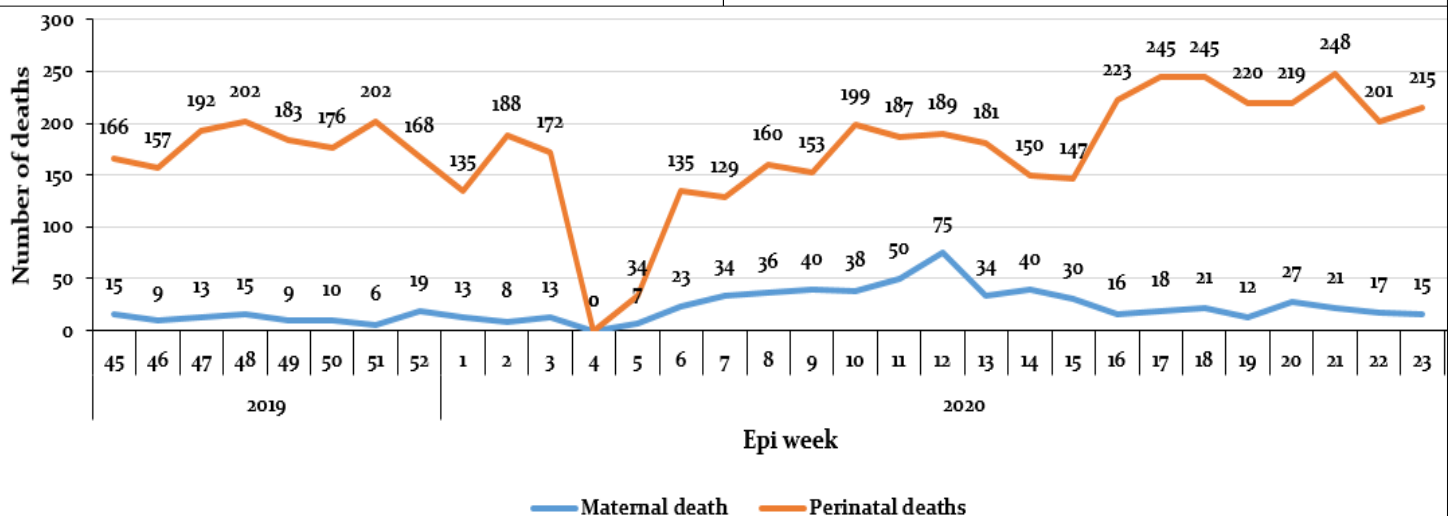
- 9 AFP case was reported during week 23 compared with 5 case reported in week 22
- The 9 cases were reported from; Abim (1), Buliisa (1), Bushenyi (1), Kasese (1), Kibaale (1), Kikuube (1), Pakwach (1), Pallisa (1) and Yumbe (1).
- The Non-polio AFP rate is 0.71/100,000 children 0 - 14 years compared with 1.40/100,000 children 0 -14 years in 2019
- The stool adequacy sample collection rate is 93.79% compared with 89.29% in 2019 (refer to fig 2)
- The adequate samples collection rate is 92.86% compared with 89.40% in 2019
- NPENT rate is 14.18% compared with NPENT rate of 12.65% in 2019

Fig 2: Stool adequacy rate, week 23



Data source: EPI lab

Fig 4. Trends of maternal (15) and perinatal deaths (215) week 45, 2019-week 23, 2020

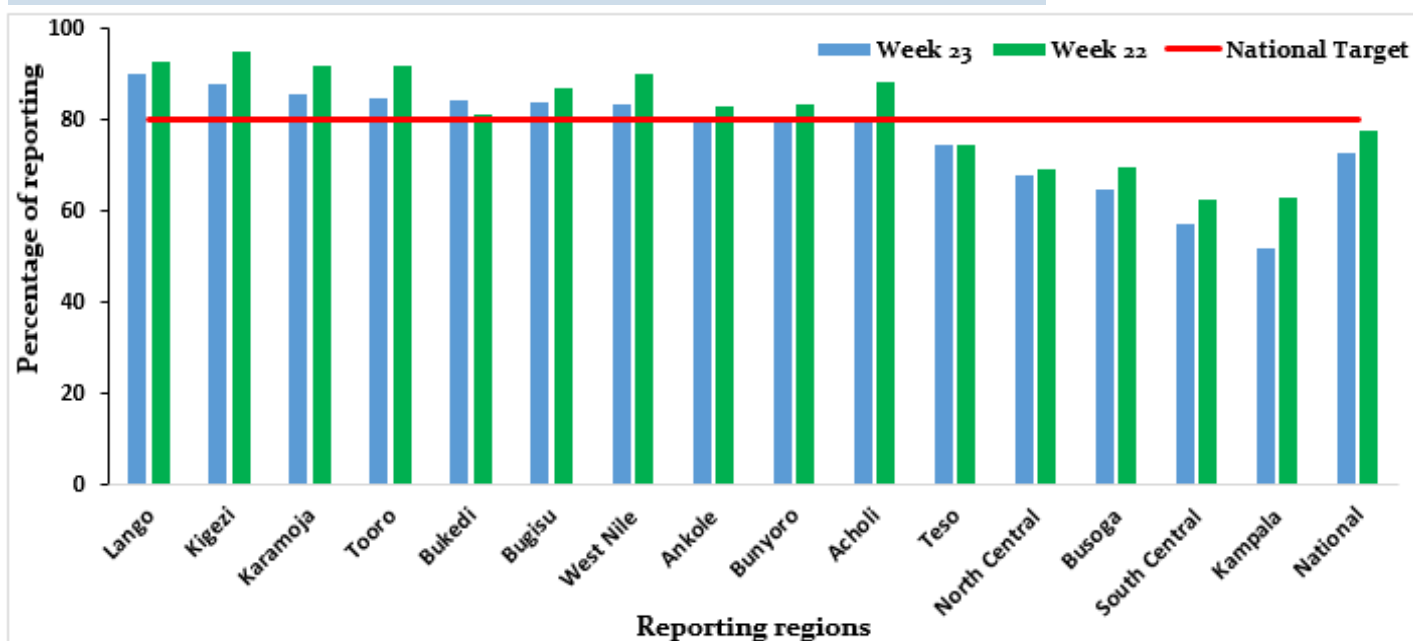


Data source: DHIS2

Table 2: Distribution of maternal deaths (n=15) and perinatal deaths (n=215), week 23

Maternal deaths			Perinatal deaths					
District	Health facility	No. Deaths	District	Macerated Still births - Deaths	District	Fresh Still Birth - Deaths	District	Early Neonatal deaths 0-7 days - Deaths
Mbarara	Mbarara RRH	2	Kampala	28	Kampala	31	Kampala	20
Kampala	Kawempe NRH	3	Hoima	3	Pader	9	Obongi	8
Hoima	Hoima RRH	2	Koboko	3	Hoima	4	Mubende	4
Gulu	St. Mary's LacoH	1	Zombo	3	Kagadi	4	Kamwenge	2
Kitgum	Akuna Labar HCIII	1	Masindi	3	Mubende	4	Hoima	2
Ibanda	Ruhoko HC IV	1	Bundibugyo	2	Iganga	4	Rukungiri	2
Kamuli	Kamuli Mission H	2	Kamwenge	2	Lira	3	Koboko	2
Rukungiri	Nyakibale Hosp	1	Nebbi	2	Kamwenge	3	Luwero	2
Kamwenge	Rukunyu Hosp	1	Gulu	2	Mbarara	3	Kasese	2
Kyenjojo	Kyenjojo Hosp	1	Kabarole	2	Kyotera	2	Kyotera	1
			Kasese	2	Kyenjojo	2	Lira	1
			Mbarara	2	Gulu	2	Pakwach	1
			Iganga	2	Oyam	2	Lyantonde	1
			Lira	1	Kabarole	2	Kalaki	1
			Isingiro	1	Kanungu	2	Kyenjojo	1
			Kibuku	1	Bundibugyo	1	Nebbi	1
			Kyenjojo	1	Lyantonde	1	Gulu	1
			Nakapiripirit	1	Amolatar	1	Oyam	1
			Rukungiri	1	Obongi	1	Moyo	1
			Bududa	1	Luwero	1	Kagadi	1
			Luwero	1	Busia	1	Kabarole	1
			Oyam	1	Bushenyi	1	Zombo	1
			Kitagwenda	1	Mayuge	1	Buikwe	1
			Ntoroko	1	Kitgum	1	Kanungu	1
			Kalungu	1	Napak	1	Kitgum	1

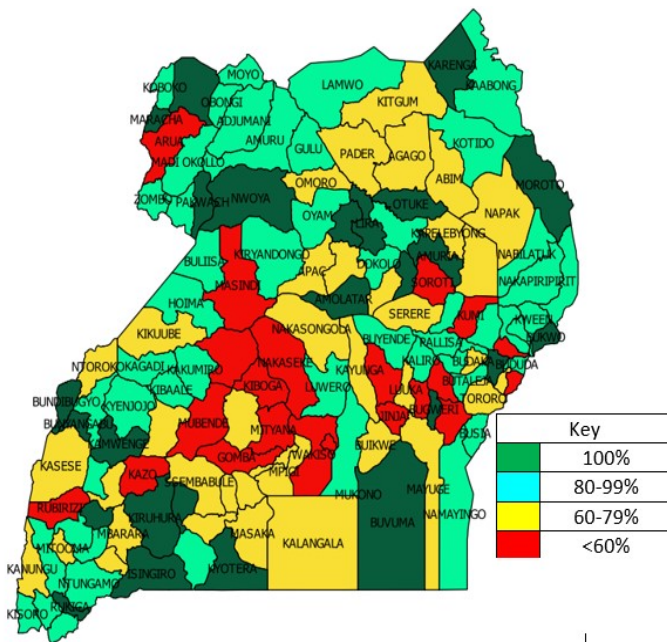
Fig 4: Percentage of weekly reporting per region, Epi week 23, 2020



- Lango region had the highest reporting rates of 90 %, Kigezi at 87.8% followed by Karamoja at 85.7%,
- The lowest reporting in Kampala at 51.6%
- 72.5% National average reporting rate (fig 4)

Completeness of reporting by District

Table 6: Completeness of reporting, week 23, 2020



Source: DHIS2

Acknowledgement and Recommendations

- MoH acknowledges all efforts made by all districts and health facilities in surveillance activities.
- Regions of; Lango, Kigezi, West Nile, Tooro, Karamoja, Ankole and Bugisu achieved the national targets for the last two weeks.
- Regions of; Teso, North Central, South Central, Busoga and Kampala have consistently reported below the national target of 80%.
- Infectious Disease Institute (IDI) should reach out to Arua District to address the persistent poor reporting.
- Implementing Partners supporting surveillance activities in different districts across the country are requested to support improvement of surveillance data quality in their respective districts.

Editorial team :

Allan Muruta, Carol Kyoziira, Godfrey Bwire , David Muwanguzi, Anne. Nakinsige, Eldard Mabumba, Benard Lubwama, Leocadia Kwagonza, Harriet Mayinja, Specioza Katusiime, Maureen Nabatanzi, Apolo Ayebale, Freda Aceng, Godfrey Ekuka, Emma Arinaitwe, Job K., Robert Kato, Joyce Nguna, Milton Wetaka, Joshua Kayiwa, Jayne Tusiime.

Remember, your feedback is important to us.

Table 3: Public Health emergencies in neighbor countries

Country	Condition	No. of Cases	No. of deaths	Grade
DRC	Cholera	9630	112	Grade 3
	COVID 19	3195	71	Grade 3
	EVD	3463	2280	Grade 3
	Measles	59796	783	Grade 2
	Monkey pox	1441	37	Ungraded
	Plague	20	7	Ungraded
	Poliomyelites (cVDPV ₂)	113	0	Grade 2
Kenya	Chikungunya	202	0	Ungraded
	Cholera	555	13	Ungraded
	COVID 19	1961	64	Grade 3
	Leishmania	95	4	Ungraded
	Measles	812	3	Ungraded
Rwanda	COVID 19	370	1	
Tanzania	COVID 19	509	21	Grade 3
South Sudan	COVID-19	994	10	Grade 3
	Hepatitis E	274	3	Ungraded
	Measles	473 ²	26	Ungraded
	Yellow fever	2	0	Ungraded

Source: WHO EPI bulletin week 20

- The timeline for EPI bulletin has been revised. This means that the bulletin will consist of only weekly data that is submitted on time (by Monday midday). Districts are encouraged to ensure timely reporting to enhance early detection and prompt response.
- UNEPI reminds and encourages all the districts to carry out active search for AFP, NNT, EAFI and measles cases in their health facilities and communities.
- Maternal deaths and perinatal deaths audits should be conducted to address issues surrounding excessive deaths of mothers and newborns especially for Kampala region.
- Partners are urged to support districts that are currently affected by outbreaks

Data source: DHIS2

Summary of COVID-19 outbreak in Uganda

Summary statistics as of 17 th June 2020 at 22:00 hrs	
Individuals under institutional quarantine today	1,683
Suspected cases	00
Probable cases	00
Total Confirmed Cases	741*
Cumulative deaths (suspected, probable or confirmed)	00
Health facilities	00
Community	00
Deaths among confirmed cases	00
Confirmed cases on admission	379
Ugandans	299
Non-Ugandan nationals	80
Cumulative number of discharged cases	442
Runaways from isolation	00
Cumulative contacts listed	9,277
Contacts that have completed 14 days	7,355
Number of contacts still under follow up	1,922
Contacts followed up today	1,882 (98%)
Specimens collected and sent to the lab today	2,702
PoE	1,554
Contacts and alerts	1,148
Health workers	00
Cumulative specimens collected	160,738
Number of cases with positive results today	09
PoE samples	04
Contacts and alerts	05
Health workers	00
Specimens with pending results	00

*As per the presidential directive, the total case tally now excludes non-Ugandan nationals.