



Ministry of Health Uganda

Weekly Epidemiological Bulletin

Epidemiological Week 24 2016

13th-19th June 2016

Highlights of the week

- ☞ Cholera cases reduce by 50%.
- ☞ No new cases of Rift Valley Fever (RVF) reported
- ☞ An Average of 82.7% of all health facilities in Uganda reporting. No district with $\leq 30\%$ of their health facilities reporting

Table 1: Summary table of the priority disease and events in week 24, 2016

Indicator	Week 24 2015	Week 23 2016	Week 24 2016
% of Districts reporting (n=112)	99	100	100
% of Health facilities reporting	63.1	80.4	82.7
Priority diseases	Cases (deaths)	Cases (deaths)	Cases (deaths)
AFP	0	3(0)	8(0)
Animal bites	473(1)	322(1)	263(1)
Cholera	0	78 (3)	34(1)
Dysentery	1037(0)	1018(1)	842(3)
Guinea Worm	5(0)	5(0)	5(0)
Malaria	235754	255315(55)	280731(79)
Measles	165(0)	57(1)	52(0)
Bacterial Meningitis	12(0)	10(3)	14(1)
NNT	0	0(0)	1(0)
Plague	6(0)	2(0)	1(0)
Typhoid	2386(3)	2270(4)	2502(0)
MDR TB	–	21(7)	21(1)
Human Influenza samples (lab confirmed)		-	

Completeness of Reporting

In week 24 of 2016, all 112 districts reported with an average reporting rate of 82.3% which is a more than 20% increase in reporting rate compared to the same week in 2015. An overall of 19.6% of the districts had 100% of all their health facilities reporting; 23 districts (21%) had all their health units reporting and 57% of the districts achieved the national target reporting rate of 80%. Similar to the previous 2 months, no district had less than 30% of their facilities reporting. The district level performances in week 24 have been presented in the figures below;

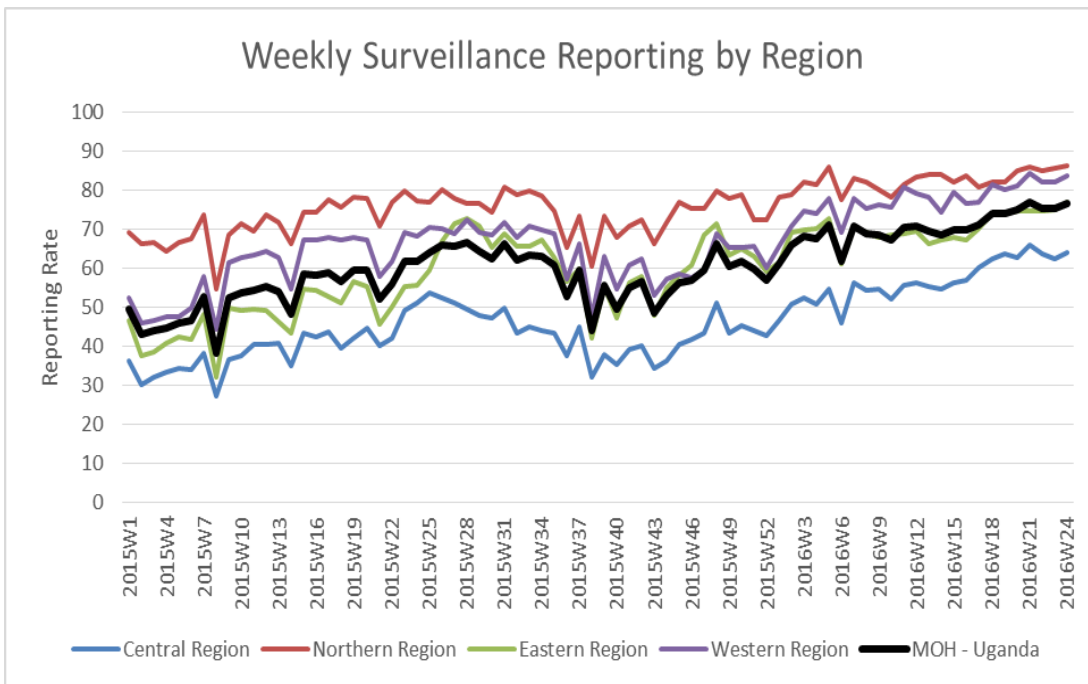


Figure 1: Figure Showing weekly surveillance reporting rates by region in week 24, 2016

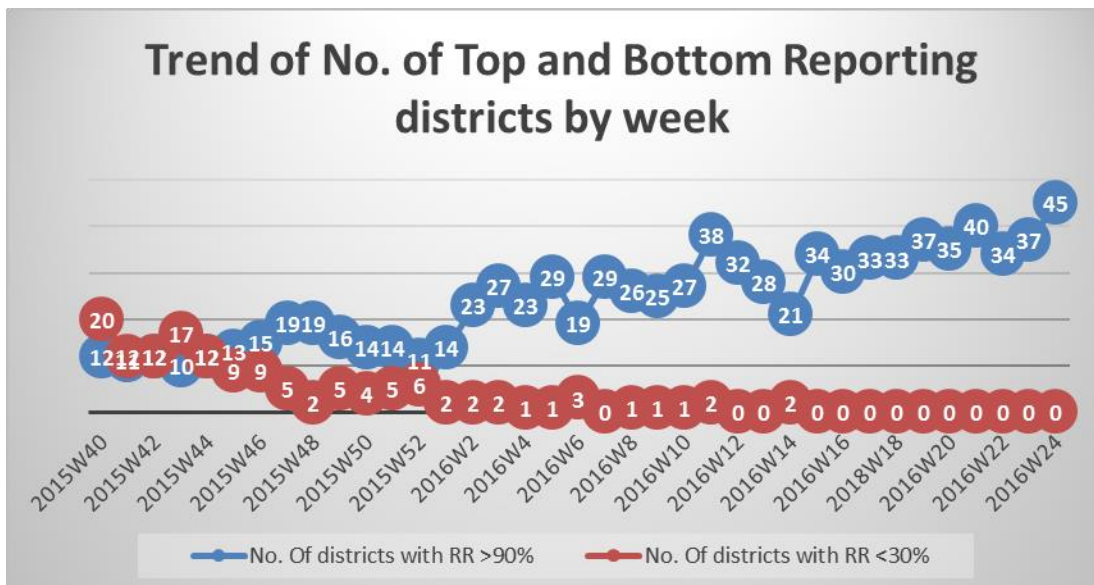


Figure 2: Figure Showing trend of top and bottom reporting in week 24, 2016

Disease outbreaks

Cholera:

In week 24 of 2016, 34 cases of Cholera were reported from five districts (Bulisa 2, Hoima 2(1), Mbale 1, Namayingo 5, Nebbi 24) with one cholera related death (CFR=2.9%). This is a 50% decrease in the number reported compared to the previous week.

Rift Valley Fever: There have been no reports of new RVF cases following a single case from Kabale district confirmed on 10th June 2016. Kabale district. Active surveillance activities are ongoing among humans and animals.

Malaria: 280731 cases of malaria were reported in week 24 of 2016 with 79 deaths (CFR= 0.03%). Trends of Malaria case are way above malaria normal channels for most districts. The malaria normal channels for some of the 10 epidemic districts in Northern Uganda are as shown in the graphs below.

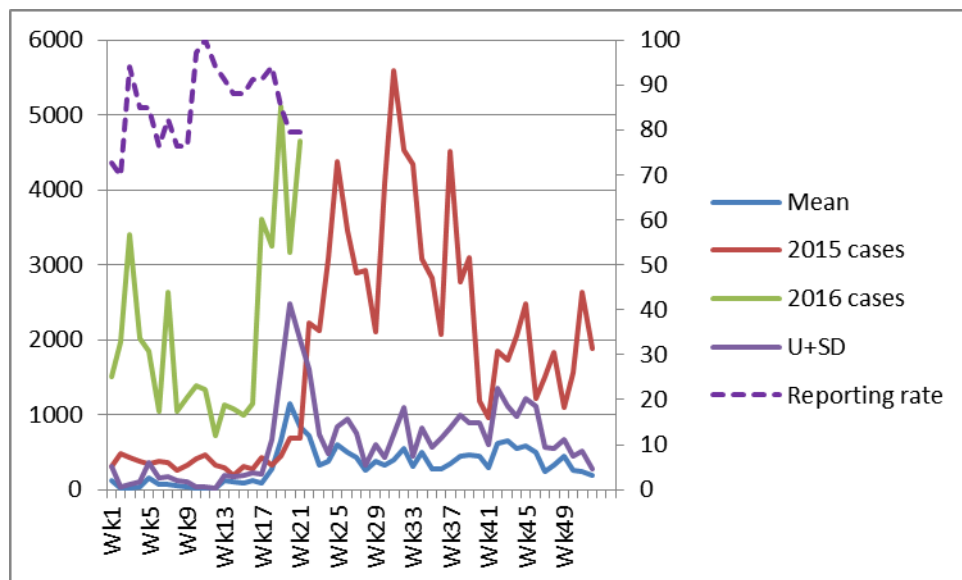


Figure 3: Malaria normal channels and reporting rates for Agago district by week 24 of 2016

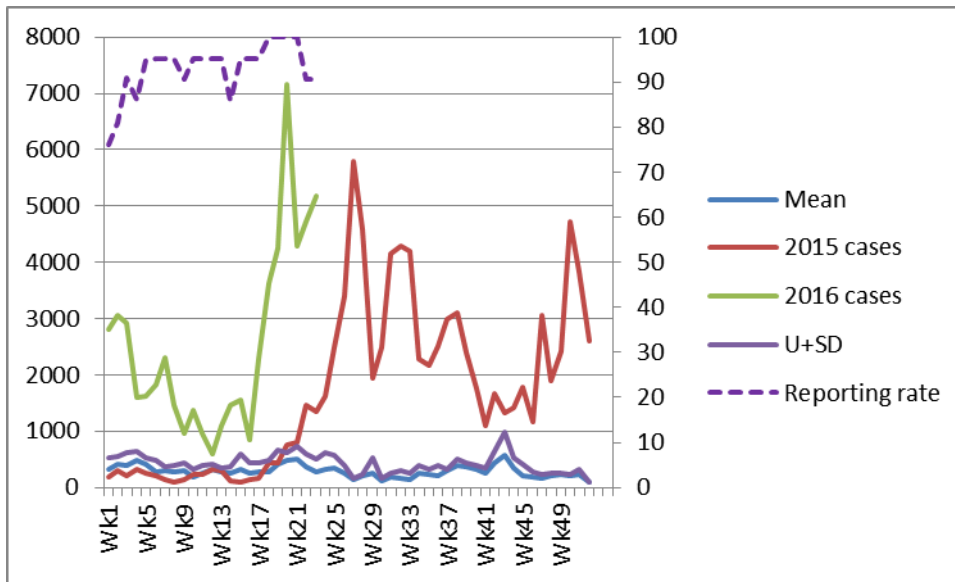


Figure 4: Malaria normal channels and reporting rates for Amuru district by week 24 of 2016

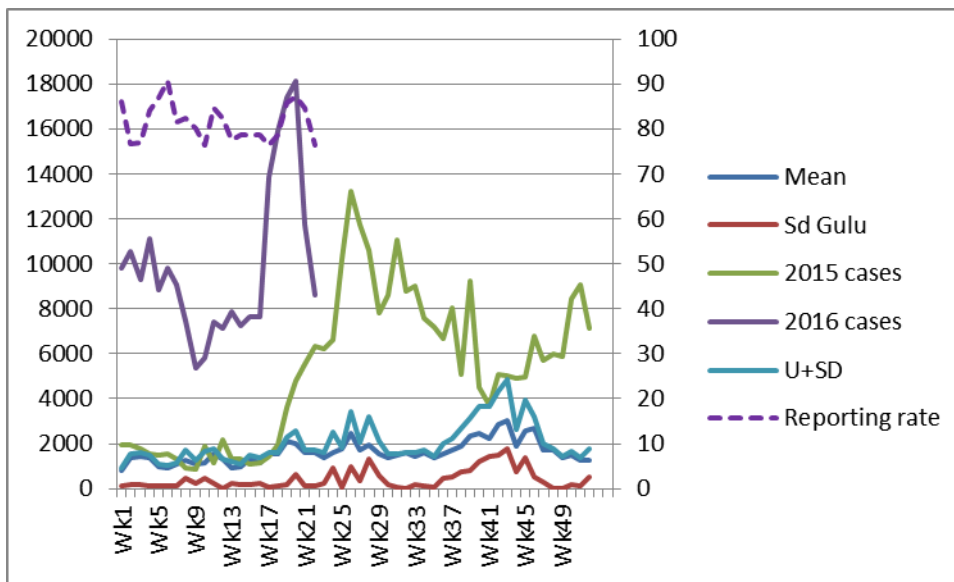


Figure 5: Malaria normal channels and reporting rates for Gulu district by week 24 of 2016

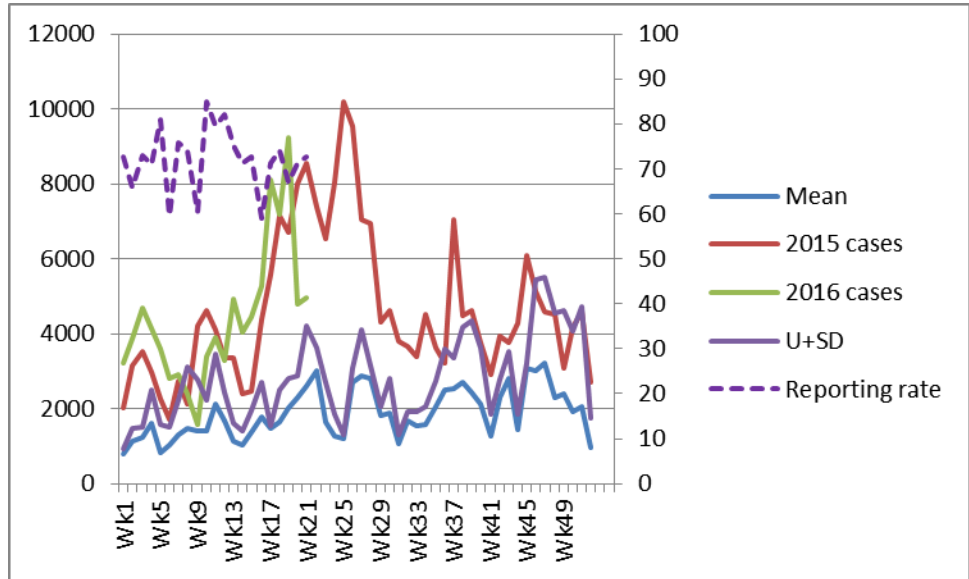


Figure 6: Malaria normal channels and reporting rates for Arua district by week 24 of 2016

Measles: 52 suspected cases of measles were reported from 23 districts in week 23, 2016 with no measles related death. This is comparable to the numbers reported the previous week. No district reported 5 or more suspected measles cases. In the same week of 2015, the country was experiencing a measles epidemic in several districts.

Typhoid fever: 2502 cases of suspected typhoid fever were reported in week 24 of 2016, with no typhoid related deaths. Districts with attack rates of $\geq 10/100,000$ are shown in the table below.

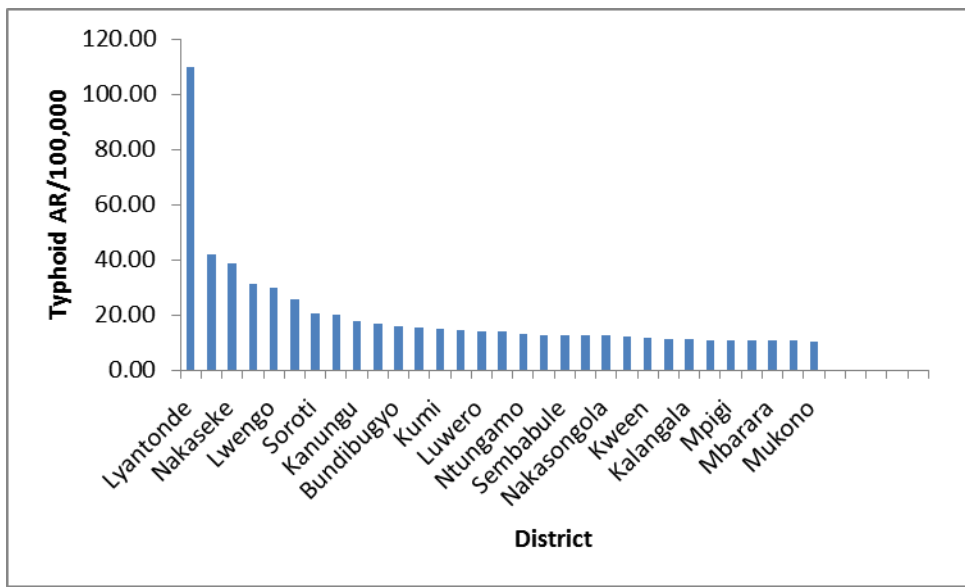


Figure 7: Districts with Typhoid fever attack rates of $\geq 10/100,000$ in week 24 of 2016

AFP: A double in the number of suspected AFPs were reported from 8 districts in week 24 of 2016 compared to the previous week. There were no AFP related deaths reported in the same period.

Neonatal Tetanus: One case of NNT was reported in week 24 of 2016 from Kabarole district with no NNT related deaths.

Maternal and Perinatal deaths: Eight (8) maternal deaths were reported in week 24 of 2016 from 6 districts of Kayunga, Mukono, Kabarole, Mubende, Zombo and Kampala districts. Also 38 perinatal deaths were reported during this period from 14 districts as shown in table 2 below.

District	Facility	Maternal Deaths	Perinatal Deaths
Kyankwanzi	Kyankwazi HC III	0	1
Yumbe	Yumbe Hospital	0	1
Wakiso	Kisubi Hospital	0	1
Kayunga	Kayunga Hospital	1	4
Mukono	St. Francis Naggalama Hospital	1	3
Kabarole	Fort Portal Regional Referral Hospital	2	6
Mubende	Mubende Regional Referra Hospital	1	7
Luwero	JEK Com HC III	0	1
Bushenyi	Kiu Teaching Hospital	0	4
Zombo	Nyapea Hospital	2	2
Gulu	St. Mary's Lacor Hospital	0	1
Nebbi	Nebbi Hospital	0	3
Kampala	Mengo General Hospital	1	2
Bushenyi	Comboni Hospital	0	2

Table 2: Health Facilities reporting maternal and perinatal deaths in week 24, 2016

International Health Events:

Yellow Fever in Congo: At the request of Democratic Republic of Congo (DRC)'s National Border Hygiene Programme, IOM [International Organization for Migration] has trained a 1st group of border health officials as part a national contingency plan to combat an outbreak of yellow fever (YF). The workshop was designed to improve participants' understanding of an Integrated Surveillance of Diseases and Response, international health regulations, the management of migration flows during outbreaks, and the registration of suspected cases. Saturnin Phuati Nganzi, who heads the National Border Hygiene Programme, said: "This 1st training has equipped my team with the right tools to reinforce existing epidemiological surveillance at the borders."

Since an initial outbreak in December 2015, the YF epidemic has killed about 345 people in Angola and continues to gain ground in the DRC. According to a recent statement from the World Health Organization, the DRC has already registered 1044 suspected cases.

Some 67 deaths have been confirmed, mainly in the provinces of Bas-Uélé, Kwango Tshuapa, Kongo Centra, and Kinshasa. On 20 June 2016 DRC's Minister of Health declared an epidemic.

YF is transmitted by the same mosquitoes that spread the Zika and dengue viruses. There is currently almost no YF vaccine left in DRC and a new stock of more than 1 million doses could take weeks to arrive in country, health officials have said. The government is calling on the Congolese population to be vigilant and to scrupulously follow the instructions of the health authorities and take all necessary steps to get vaccinated, especially before travelling to areas at risk and abroad. IOM is also working with its Congolese and international partners to develop a comprehensive approach to improve health interventions at borders and monitor cross-border movements between Angola and the DRC.

Un-diagnosed Hemorrhagic disease, Southern Sudan. A team from WHO's Regional Office for Africa is investigating a mysterious viral haemorrhagic fever outbreak in northern South Sudan that has killed 10 people. At the same time, national health officials are scrambling to put preventive measures in place based on the scant knowledge they have so far. However, in a country where nearly 2.5 years of fighting have left the health system in tatters, it is unclear how effective those efforts will be. The outbreak was 1st reported to national health officials in March 2016 though it is suspected to have started as early as December 2015. The symptoms include unexplained bleeding, vomiting, and fever. 52 suspected cases (most infections have been in people younger than 20 years) have occurred so far in 2 counties near South Sudan's border with Sudan, although there has been only one new patient since early May 2016. The country is still taking precautions, Rumunu said, given that officials remain in the dark over how the syndrome is transmitted or what it even is.

Laboratory tests of samples have so far been negative for the more common haemorrhagic fevers, including Ebola virus disease, Marburg virus disease, and Crimean-Congo haemorrhagic fever. There is no evidence of person-to-person transmission. That had led researchers to suspect a mixed arbovirus outbreak, according to WHO.

Accessed at <http://www.promedmail.org/> on 28/06/2016.

Summary table for epidemiological reports received for Week 24 (13th June- 19th June 2016)

(Numbers in brackets indicate deaths)

District	% HU Reporting	AEIs	AFP	Animal Bites	Bacterial Meningitis	Cholera	Guinea Worm	Dysentery	Malaria	Measles	NNT	Plague	Presumptive MDR TB	Typhoid Fever	Yellow Fever
Abim	75	0	0	2	0	0	0	13	860	0	0	0	0	2	0
Adjumani	97.1	0	0	0	0	0	0	32	6570(1)	0	0	0	0	1	0
Agago	79.4	0	0	8	0	0	0	11	4,654	0	0	0	0	12	0
Alebtong	66.7	0	0	0	0	0	0	0	1,452	0	0	0	0	0	0
Amolatar	76.9	0	0	0	0	0	0	0	494	0	0	0	0	5	0
Amudat	100	0	0	0	0	0	0	9	664	0	0	0	0	0	0
Amuria	74.4	1	0	6	0	0	0	4	6,463	0	0	0	0	0	0
Amuru	87.5	0	0	0	0	0	0	16	3,660	0	0	0	0	1	0
Apac	91.9	0	0	1	0	0	0	1	4,114	0	0	0	0	1	0
Arua	72.6	0	0	5	1	0	0	27	4967(1)	0	0	0	0	120	0
Budaka	100	0	0	0	0	0	0	2	1,473	0	0	0	0	0	0
Bududa	93.3	0	0	4	0	0	0	0	1,431	0	0	0	0	0	0
Bugiri	72	0	0	1	0	0	0	3	3699(1)	0	0	0	0	31	0
Buhweju	94.1	0	0	0	0	0	0	0	203	0	0	0	0	2	0
Buikwe	49.1	0	0	1	0	0	0	3	1,619	1	0	0	0	27	0
Bukedea	75	0	0	0	0	0	0	8	2,198	0	0	0	0	2	0
Bukomansimbi	100	0	0	0	0	0	0	0	1,052	0	0	0	0	9	0
Bukwo	93.8	0	0	6	0	0	0	19	331	2	0	0	0	13	0
Bulambuli	100	0	0	0	0	0	0	0	1,120	0	0	0	0	0	0
Buliisa	100	0	0	0	0	2	0	9	859	1	0	0	0	7	0
Bundibugyo	90	0	0	0	0	0	0	21	2,267	0	0	0	0	35	0
Bushenyi	94.7	0	0	4	0	0	0	0	1,315	0	0	0	0	40	0
Busia	89.7	0	0	3	0	0	0	7	3,347	1	0	0	0	31	0
Butaleja	62.5	0	0	0	0	0	0	5	964	0	0	0	0	14	0
Butambala	95.7	0	0	0	0	0	0	2	878	2	0	0	0	7	0
Buvuma	63.6	1	0	0	0	0	0	3	192	3	0	0	0	1	0
Buyende	95.5	0	1	0	0	0	0	3	1,751	0	0	0	0	0	0
Dokolo	100	0	0	2	0	0	0	1	1,123	0	0	0	0	3	0
Gomba	94.7	0	0	5	0	0	0	1	1,170	0	0	0	0	0	0
Gulu	76.5	1	0	6	4(1)	0	0	27	12695(2)	2	0	0	0	39	0
Hoima	51.8	0	0	6	0	2(1)	0	34	6,794	2	0	0	0	79	0
Ibanda	95.8	0	0	2	0	0	0	0	3,856	0	0	0	0	4	0
Iganga	55.4	0	0	3	0	0	0	6	4376(2)	0	0	0	0	3	0
Isingiro	91.4	0	0	1	0	0	0	3	4081(3)	1	0	0	0	22	0
Jinja	70.5	0	0	2	0	0	0	9	4,470	0	0	0	5	50	0
Kaabong	77.8	0	0	0	0	0	0	12	1,423	0	0	0	0	12	0

Kabale	100	0	0	3	0	0	0	0	702(15)	0	0	0	0	0	0
Kabarole	56.3	0	0	4	0	0	0	7	3299(9)	0	1(1)	0	0	33	0
Kaberamaido	80	0	0	3	0	0	0	7	1,386	0	0	0	0	8	0
Kalangala	76.5	0	0	1	0	0	0	14	462	2	0	0	0	6	0
Kaliro	76.2	0	0	0	0	0	0	0	1,517	0	0	0	0	19	0
Kalungu	71.4	0	0	1	0	0	0	1	1171(1)	0	0	0	0	20	0
Kampala	42.4	0	0	9	1	0	0	9	2885(2)	4	0	0	0	192	0
Kamuli	71.2	0	0	7	0	0	0	5	5219(1)	2	0	0	0	2	0
Kamwenge	75	0	0	5	0	0	0	0	4,481	0	0	0	0	8	0
Kanungu	93.8	0	0	1	0	0	0	1	1,288	0	0	0	0	45	0
Kapchorwa	80	0	0	2	0	0	0	6	640	0	0	0	0	0	0
Kasese	92.4	0	0	1(1)	0	0	0	18	5506(3)	0	0	0	0	16	0
Katakwi	76.9	0	0	0	0	0	0	0		0	0	0	0	0	0
Kayunga	71.4	0	0	1	0	0	0	8	1928(1)	0	0	0	0	4	0
Kibaale	67.6	0	0	1	1	0	1	8	3706(3)	2	0	0	0	158	0
Kiboga	86.7	0	0	1	0	0	0	1	756	1	0	0	0	19	0
Kibuku	100	0	0	1	0	0	0	0	571	0	0	0	0	1(1)	0
Kiruhura	79.1	0	1	1	0	0	0	0	2,454	1	0	0	0	11	0
Kiryandongo	84.6	1	0	5	0	0	0	4	2648(2)	1	0	0	0	8	0
Kisoro	89.5	0	0	0	0	0	0	0	228	0	0	0	0	0	0
Kitgum	68.8	0	0	0	0	0	0	14	4530(6)	0	0	0	9	64	0
Koboko	100	0	0	1	0	0	0	1	2,200	0	0	0	2	0	0
Kole	100	0	0	0	0	0	0	0	1,596	0	0	0	0	0	0
Kotido	63.2	0	0	0	0	0	0	34	1,347	0	0	0	0	75	0
Kumi	70.4	0	0	4	0	0	0	10	3424(2)	0	0	0	0	38	0
Kween	100	0	0	0	0	0	0	5	615	0	0	0	0	11	0
Kyankwanzi	68	0	1	0	0	0	0	1	892	0	0	0	0	26	0
Kyegegwa	100	0	0	1	0	0	0	1	1257(1)	0	0	0	0	0	0
Kyenjojo	59.6	0	0	1	0	0	0	5	2,908	1	0	0	0	11	0
Lamwo	90.5	0	0	4	0	0	0	2	5,168	0	0	0	0	7	0
Lira	100	0	0	2	2	0	0	5	3,650	0	0	0	0	16	0
Luuka	80.6	0	0	0	0	0	0	1	2,828	0	0	0	0	2	0
Luwero	98.6	0	1	5	0	0	0	14	2860(1)	0	0	0	0(1)	65	0
Lwengo	100	0	1	2	0	0	0	7	3579(1)	1	0	0	0	82	0
Lyantonde	76.7	0	0	0	0	0	0	0	2,198	0	0	0	0	104	0
Manafwa	75	0	0	2	0	0	0	3	1,467	0	0	0	0	4	0
Maracha	100	0	0	0	0	0	0	11	1713(1)	0	0	0	0	8	0
Masaka	61.5	0	0	0	0	0	0	1	1694(1)	0	0	0	0	3	0
Masindi	86	0	0	9	0	0	0	9	1,830	3	0	0	0	12	0
Mayuge	71.7	0	0	1	0	0	0	7	3,590	1	0	0	0	0	0

Mbale	69.6	0	0	7	1	1	0	11	2935(1)	0	0	0	0	20	0
Mbarara	89.7	0	0	14	0	0	0	5	1,718	0	0	0	0	50	0
Mitooma	91.3	0	0	0	0	0	0	0	1,855	0	0	0	0	5	0
Mityana	72.9	0	0	5	0	0	0	8	2,081	1	0	0	0	4	0
Moroto	60	0	0	7	0	0	0	10	866(1)	2	0	0	0	11	0
Moyo	100	0	0	0	0	0	0	16	5,209	0	0	0	0	35	0
Mpigi	97.5	0	0	0	0	0	0	5	1,432	0	0	0	0	27	0
Mubende	45.5	0	0	2	0	0	0	7(2)	2089(3)	1	0	0	0	60	0
Mukono	94	0	0	7	2	0	0	11	3,191	1	0	0	0	61	0
Nakapiripirit	88.2	0	0	1	0	0	0	33	1,922	0	0	0	0	13	0
Nakaseke	87.5	0	0	7	2	0	0	11	1253(1)	4	0	0	0	76	0
Nakasongola	77.1	0	0	5	0	0	0	9	1948(1)	1	0	0	0	23	0
Namayingo	78.1	0	0	2	0	5	0	18	2,910	1	0	0	0	17	0
Namutumba	73.5	0	1	0	0	0	0	5	1,400	1	0	0	0	4	0
Napak	85.7	0	0	0	0	0	0	17	1,779	1	0	0	0	4	0
Nebbi	93	0	0	4	0	24	0	25	4287(4)	0	0	0	1	13	0
Ngora	91.7	0	0	0	0	0	0	10	2,605	0	0	0	0	5	0
Ntoroko	88.9	0	0	0	0	0	0	1	319(1)	0	0	0	0	0	0
Ntungamo	81.8	0	0	7	0	0	0	0	3471(2)	0	0	0	0	63	0
Nwoya	94.4	0	0	1	0	0	0	2	2,165	0	0	0	0	0	0
Otuke	94.1	0	1	0	0	0	0	1	1,120	0	0	0	0	0	0
Oyam	100	0	0	11	0	0	0	15	4,476	0	0	0	0	44	0
Pader	82.1	0	0	0	0	0	0	11	4,274	0	0	0	0	1	0
Pallisa	84.8	0	0	2	0	0	0	5	2,829	1	0	0	0	21	0
Rakai	71	0	0	2	0	0	0	16	4,521	0	0	0	0	44	0
Rubirizi	100	0	0	0	0	0	0	3	928	0	0	0	0	7	0
Rukungiri	78.7	0	0	2	0	0	0	1(1)	1,378	0	0	0	0	2	0
Sembabule	100	0	0	0	0	0	0	5	2,680	0	0	0	0	36	0
Serere	95.2	0	0	1	0	0	0	12	5,027	0	0	0	0	2	0
Sheema	100	0	0	4	0	0	0	0	710	0	0	0	0	1	0
Sironko	76.7	0	0	0	0	0	0	1	1,301	0	0	0	0	9	0
Soroti	61.1	0	0	6	0	0	0	7	4,458	0	0	0	0	52	0
Tororo	81.9	0	1	9	0	0	0	9	3735(1)	0	0	0	0	17	0
Wakiso	38.2	0	0	0	0	0	0	19	2,825	4	0	1	4	106	0
Yumbe	100	0	0	7	0	0	0	17	3419(4)	0	0	0	0	10	0
Zombo	100	0	0	3	0	0	0	5	2,837	0	0	0	0	8	0
National	82.77	4	8	263(1)	14(1)	34(1)	1	842(3)	280731(79)	52	1	1	21(1)	2502	0

Key: Yellow: 100% reporting, Green: 80-99% reporting, Red: Below 80% reporting

HU= Health Units, **AFP**=Acute Flaccid Paralysis, **AEIs**= Adverse Events following Immunization, **NNT**=Neonatal Tetanus, **MDR TB**= Multi-Drug Resistant Tuberculosis, **NR** =Not Reported

Compiled by the Epidemiological Surveillance Division, Ministry of Health

Editorial: *Dr. I. Nabukenya, Mr. J. Kissa, Dr. C.Kihembo, J. Nguna, Dr. B. Masiira, , Dr. M. Musenero, Mr. M. Mugagga, Dr. J. Wamala, Dr. I. Makumbi , Dr. R. Musoke, Dr. J. Sekajugo, Dr. F. Adatu, Dr. C. Okot, Dr. M. Nanyunja*

Founders: *Dr. J. Kamugisha (RIP), Dr. J. Wanyana, Dr. M. Lamunu, Dr. C. Mugeru, Dr. N Ndayimirigye, Mr. L. Luswa (RIP), Dr. N. Bakyaaita, Mr. M. Mugagga*

*For comments please contact: The Epidemiological Surveillance Division - MoH; P.O BOX 7272 Kampala, Tel: 0414-340874/0414-345108;
Email: esd@hhealth.go.ug or esduganda@yahoo.co.uk*