



MINISTRY OF HEALTH, UGANDA

Weekly Malaria Report



THE REPUBLIC OF UGANDA

MINISTRY OF HEALTH

EPI WEEK 32 | 5th Aug to 11th Aug 2024 | KEY HIGHLIGHTS

HIGHLIGHTS



83.1% Reporting rate



176,366
Confirmed malaria cases



3.4% (5)
Districts had inadequate ACT stock (<8 weeks)



21 Reported deaths



00 Districts response



37.1% Test Positivity Rate



00 Districts in Alert



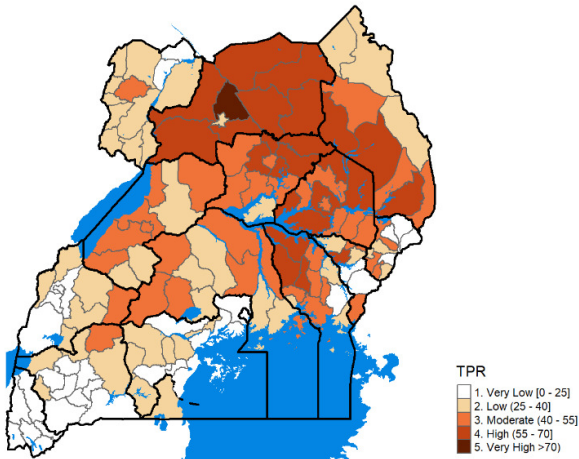
15.1% (22)
Districts had inadequate RDT stock (< 8 weeks)

The testing rate for patients with fever was 96.8 % (441,161) | Proportion treated with a negative test was 8.2% (147) | Proportion treated without a test was 1.9% (180) | Proportion treated with a positive result was 99.8% (176,013)

SUMMARY OF KEY INDICATORS OVER THE LAST 4 WEEKS

Week	Reporting rate	Confirmed cases	Test Positivity Rate	Reported Deaths	Districts with Epidemic			% District with inadequate ACTs	% District with inadequate RDTs
					Alert	District Response	IMT Response		
29	84.3	197,364	39.0	8	0	0	0	5.5	12.3
30	84.5	183,713	38.5	33	0	0	0	4.8	13.7
31	86.2	179,471	37.5	14	0	0	0	4.1	14.4
32	83.1	176,366	37.1	21	0	0	0	3.4	15.1

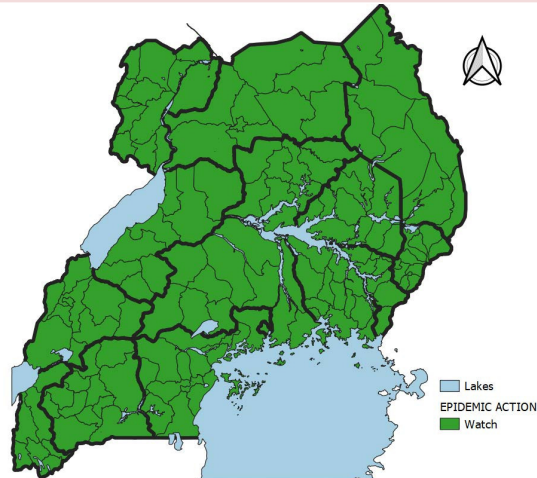
TEST POSITIVITY RATES



Test positivity rate is 37.1 this week. TPR range was between 4.8 % to 71.4 %.

The top 10 districts with the highest Test positivity rates reported are: **Gulu (71.4%), Agago (66.9%), Kapelebyong (65.6%), Kole (65.3%), Kibuku (65%), Serere (63.9%), Otuke (62.7%), Kamuli (62.1%), Pader (61.6%), Lamwo (61.4%)**

MALARIA EPIDEMIC ALERT & RESPONSE DISTRICTS



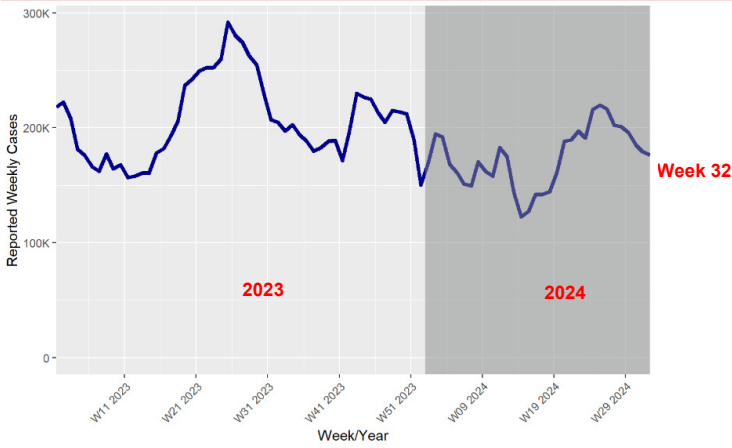
Alert districts: 00
District response: 00
Watch districts: 146

All the eastern districts that received IRS with Actellic plus other interventions (Tororo, Bugiri, Butaleja, Budaka, Butebo, Namutumba and Pallisa) are now in watch mode. An additional round of IRS with Actellic was completed in April 2024

For Kibuku, Serere, Amolatar, formerly response districts, the focus is on enhanced case management, risk communication and prevention.

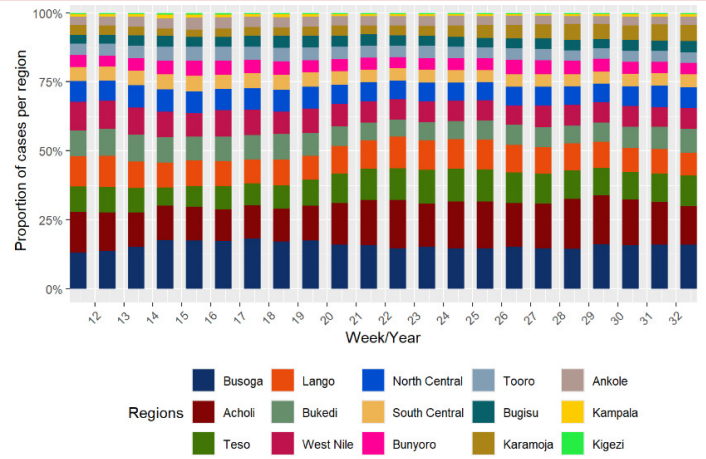
NB: Amolatar received IRS with Actellic in selected high burden sub counties between December 11, 2023 and Jan 10, 2024

WEEKLY CASES TRENDS - WK11 2022 TO WK32 2024



Currently, weekly cases are on an upward trend across the country, following the first peak transmission season. The current year's peak is lower than that of 2023.

WEEKLY PROPORTION OF CASE LOAD PER REGION

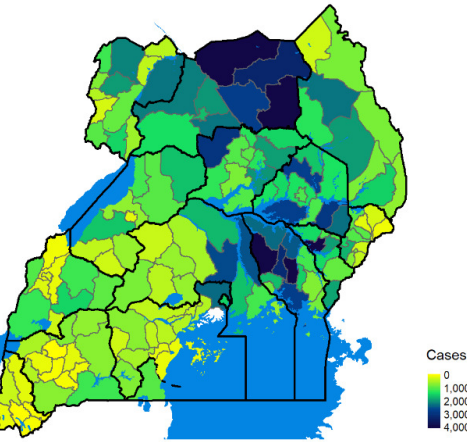


Five (5) regions contribute 57.9% of all cases in week 32. Highest in the region below:- Busoga (15.9%), Acholi (14%), Teso (11.1%), Bukedi (8.6%), Lango (8.3%)

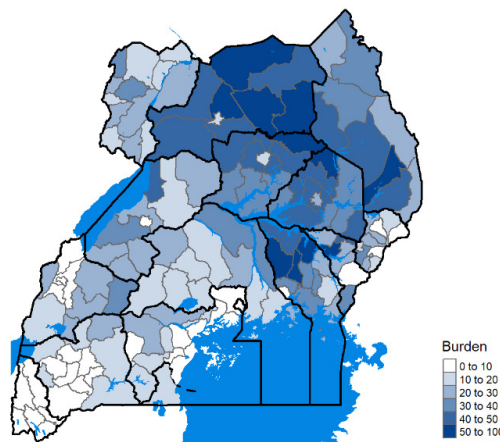
DISTRIBUTION OF CASES BY DISTRICT

OPD BURDEN (%)

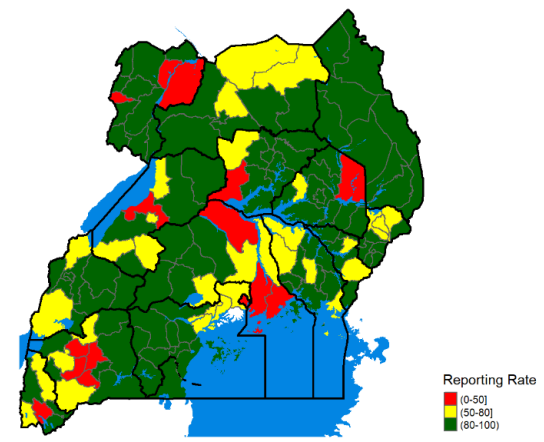
REPORTING RATE



Top 10 districts reporting the most cases this week are: Kamuli (6608), Kibuku (6538), Agago (5107), Lamwo (4241), Iganga (4072), Kitgum (3242), Luuka (3133), Oyam (2936), Kumi (2846), Pader (2747)



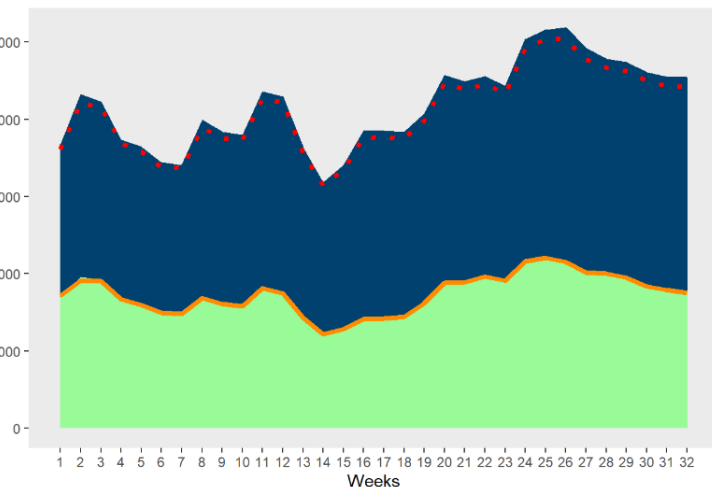
The average OPD burden for the week was 23.7%. Highest in Acholi (45.7%), Teso (41%), Lango (38.7%), Karamoja (36.7%), Busoga (34.3%) regions. Top 10 highest OPD burden districts are: Kibuku, Agago, Gulu, Otuke, Nabilatuk, Pader, Kaliro, Kamuli, Lamwo, Luuka



68.5%, (100) districts posted a reporting rate above 80%. 21.2%, (31) districts, reported between 50 to 80%. 10.3%, (15) district posted a reporting rate below 50% this week.

CASE MANAGEMENT: Suspected malaria, tests done, cases diagnosed and treated using 1st line

cases positives treated suspected tested



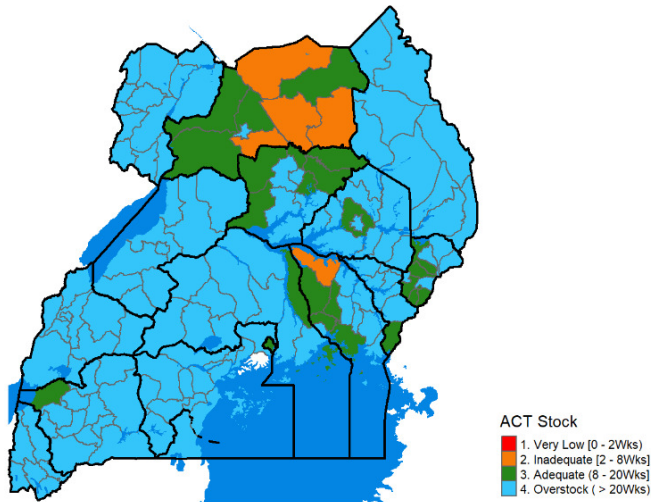
Suspected malaria, tests done, cases diagnosed and treated using 1st line

The overall national testing and treatment rates are 96.8% and 99.8% respectively. This week, 20 district(s) (Kassanda (65%), Mityana (69.1%), Bulambuli (73.2%), Kitagwenda (73.2%), Namisindwa (73.6%)) had a testing rate <90%.

1 districts had treatment rates below 90%. The lowest being Hoima City (87.7%).

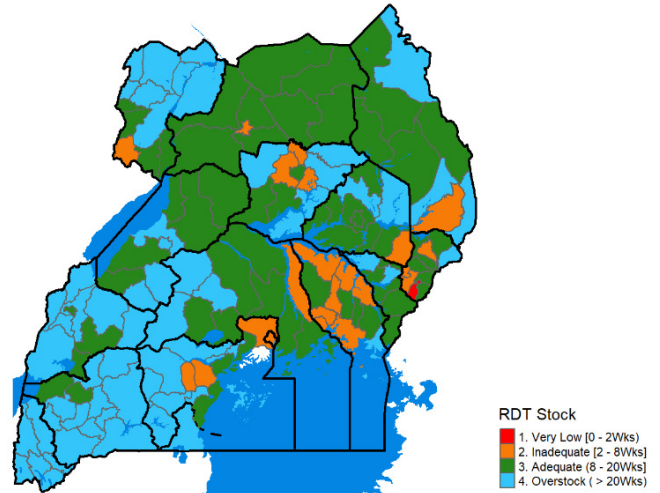
Every patient with a fever or history of fever must have a malaria test and every patient with a positive malaria must have timely treatment for malaria.

ACT AVAILABILITY IN THE DISTRICTS



3.4%, (5) district had inadequate ACT stock. District with <2 of stock: . 80.1%, (117) districts reported overstock of ACTs.

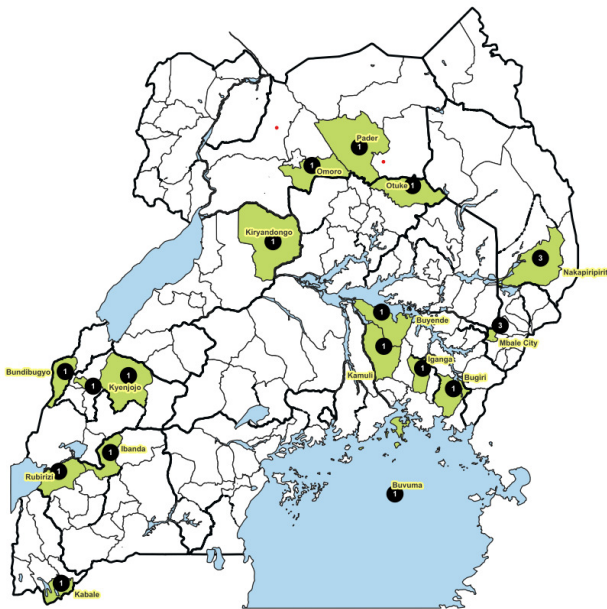
RDT AVAILABILITY IN THE DISTRICTS



15.1%, (22) district had inadequate RDT stock. District with <2 of stock: Manafwa (0) . 42.5%, (62) districts reported overstock of RDTs.

All districts that have ≤ 2 weeks of stock for any commodity, **REQUIRE** immediate support. Districts with an asterisk (*), report less than 1 week of commodities. Emphasis should be on districts in epidemic alert and response mode, and those reporting the most cases of Malaria.

MALARIA REPORTED DEATHS



Highest deaths are reported from the following districts

District	Health Facility	Deaths
Mbale City	Mbale Regional Referral Hospital	3
Nakapiripiri	Takora Health Center IV	3
Bugiri	Bugiri General Hospital	1
Bundibugyo	Ebenezer SDA HC III	1
Buvuma	Buvuma Health Center IV	1
Buyende	Kidera Health Center IV	1
Fort Portal City	Fort Portal City Regional Referral Hospital	1
Ibanda	Ibanda Hospital	1
Iganga	Iganga General Hospital	1
Kabale	Kabale Regional Referral Hospital	1
Kamuli	Kamuli Mission Hospital	1
Kiryandongo	Nyakadoti Health Center IV	1
Kyenjojo	Kyarusizi Health Center IV	1
Omoro	Lalogi Health Center IV	1
Otuke	Orum Health Center IV	1
Pader	Pajule Health Center IV	1
Rubirizi	Rugazi Health Center IV	1

FOR FURTHER INFORMATION, CONTACT:

Dr. Jimmy **OPIGO**, Asst Commissioner, NMCD/MOH opigojimmy@gmail.com | Dr. Daniel **KYABAYINZE**, Director Public Health, MOH kyabayinzed@gmail.com
 Paul **MBAKA**, Asst Commissioner, DHI/MOH paul.mbaka@gmail.com | Dr. Damian **RUTAZAANA** GF Country Facilitator, MOH damianamanya@gmail.com
 Dr. Daniel **ORIT**, NMCD/PHFP dorit@uniph.go.ug | Charity **MUTESI**, NMCD/PHFP charitymutesi@uniph.go.ug | Patrick **Kwizera**, NMCD/PHFP pkwizera@uniph.go.ug
 Joel Miti **TUTU**, Supply Chain Specialist, NMCD, MOH joelmititutu@gmail.com | Dr. **REK** John, Surveillance & Epidemiology, NMCD/PHFP jcedrek@gmail.com