

MINISTRY OF HEALTH



PHARMACY DIVISION

JULY-SEPTEMBER 2016 FACILITY TRACER MEDICINES STOCK STATUS REPORT

A Publication of the Ministry of Health Uganda

The quarterly report on the facility stock status of the 41 tracer items (in different baskets) provides information about the stock situation of health facilities in the country in order to inform the Ministry of Health and all stakeholders to make appropriate logistics decisions that ensure an effective health commodities supply chain.

The report shows the number and percentages of facilities that are appropriately stocked, over stocked or under stocked by level of care and ownership based on Months of Stock (MOS).

The MOS highlights the number of months a product will last based on the present consumption rate.

It also further indicates facilities that have over 8 months of stock (MOS) broken down by level of care and ownership.

The report shows the availability of the different baskets and overall using two indicators i.e.

1) Average percentage availability of a basket of 41 commodities based on all reporting facilities in the previous quarter

**Definition :** Availability is measured as the number of days for which a specific commodity was in stock at the facility store during the reporting period.

2) Percentage of facilities that had over 95% availability of a basket of commodities in the previous quarter

**Definition :** This indicator measures the % of health facilities that reported having the basket of commodities available during the reporting period.

The contents of the different baskets are listed below:

<u>ARV BASKET</u>	<u>LOC</u>	<u>EMHS BASKET</u>	<u>LOC</u>
Tenofovir/Lamivudine/Efavirenz (TDF/3TC/EFV)	HC3	Recommended first line ACT (Artemether/Lumefantrine 20/120mg)	HC2
Zidovudine /Lamivudine/Nevirapine (AZT/3TC/NVP)	HC3	Cotrimoxazole 480mg	HC2
Zidovudine/Lamivudine (AZT/3TC)	HC3	Thearapeutic milk F75 (75Kcal/100ml)	Hospital
Tenofovir/Lamivudine (TDF/3TC)	HC3	Thearapeutic milk F100 (100Kcal/100ml)	Hospital
Nevirapine (NVP) 200mg	HC3	Ready to use Therapeutic feeds (RUTF)	HC1
Efavirenz (EFV) 600mg	HC3	Cotrimoxazole 960mg tablet	HC3
Abacavir/Lamivudine (ABC/3TC) 60mg/30mg	HC3	Chlorhexidine 20%	HC2
Nevirapine (NVP) 50mg	HC3	Bendroflumethiazide (Aprinox) 5mg	HC3
		Propranolol 40mg	HC4
		Nifedipine tablets 20mg	HC3
		Captopril 25mg	Hospital
		Metformin 500mg	HC4
		Glibenclamide 5mg	HC4
		Insulin short-acting	HC4
		Cardiac Aspirin 75mg	HC4
<u>LAB BASKET</u>	<u>LOC</u>		
Determine HIV Screening test	HC2		
Stat -pack HIV Confirmatory rapid tests	HC2		
Unigold HIV RDT Tie-breaker test	HC2		
CD4 reagent Specify	HC4		
Malaria Rapid Diagnostic tests	HC2		
ZN reagent for AFB	HC3		
Blood 450 ml	HC4		
<u>RMNCAH BASKET</u>	<u>LOC</u>		
Depo- Provera	HC2		
Sulfadoxine/ Pyrimethamine tablet	HC2		
ORS Sachets with zinc tablet	HC2		
Measles Vaccine	HC2		
Misoprostol 200mcg Tablet	HC2		
Amoxicillin dispersible 250mg tablet (For children)	HC2		
Ceftriaxone 1g Injection	HC4		
Oxytocin Injection	HC3		
Mama Kit	HC2		
<u>TB BASKET</u>	<u>LOC</u>		
(RHZE) blister strip	HC3		
RH blister strip 150/75mg	HC3		

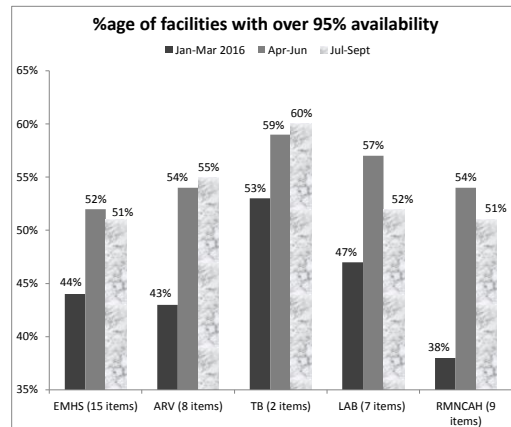
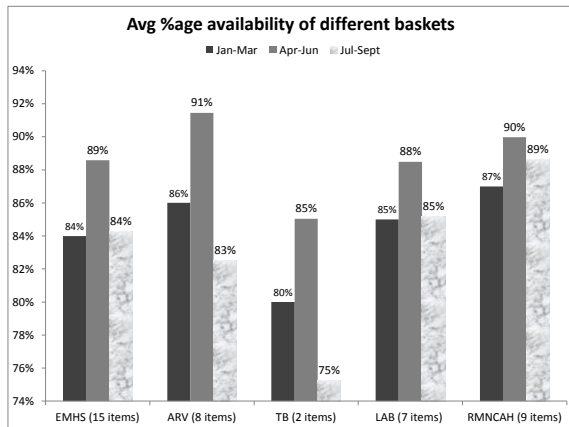
**ACTION POINTS**

1. The Pharmacy Department (PD) to work with NMS to review commodities appropriate for the different levels of care in line with the revised clinical guidelines and essential medicines and health supplies list
2. PD to refocus MMS support to health facilities to address the areas of stock management and ordering and reporting
3. PD to communicate to the DHO's, Medical Bureaus and implementing partners to:
  - a) follow-up facilities with overstock of EMHS
  - b) redistribute these commodities to facilities that are stocked out

**KEY FINDINGS**

1. Overall, facility reporting rates increased to 63% (3909 / 6229) from 60% (3735 / 6187) in the previous quarter
2. Overall average percentage availability for the basket of 41 commodities was 83% and percentage of facilities with over 95% availability was 54%
3. Percentage of facilities with over 95% was highest for TB medicines at 60% (1181 / 1574) and available for the least number of days at the health facility store 75% (68 / 90 days)
4. High percentage of facilities were either understocked/stocked out or overstocked
5. HC3s and HC4s make the largest percentage of overstocked facilities
6. All EMHS commodities experienced a stock out during the quarter
7. A number of facilities have commodities not for their LOC

AVAILABILITY INDICATORS



Percentage availability for each item (EMHS basket)

Item	n	% availty	Std Dev.
ACT_AL	3806	93	16
Bendrofluazide	1545	57	46
Captopril	1172	37	46
Cardiac Aspirin	1015	27	42
Chlorhexidine 20%	2047	82	34
Cotrimoxazole 480mg	3576	92	21
Cotrimoxazole 960mg	2066	78	37
Glibenclamide	1178	49	47
Insulin short-acting	902	25	40
Metformin	1205	43	46
Nifedipine tablets	1838	75	38
Propranolol	1386	45	47
RUTF	1142	49	45
Thearapeutic milk F100	761	17	34
Thearapeutic milk F75	764	15	33

Percentage availability for each item (ARV basket)

Item	n	% availty	Std Dev.
AZT/3TC/NVP	1633	83	35
ABC/3TC	1523	78	39
EFV 600mg	1594	81	37
NVP 200mg	1617	80	37
NVP 50mg	1490	60	44
TDF/3TC	1609	81	36
TDF/3TC/EFV	1862	86	32
AZT/3TC	1567	79	38

Percentage availability for each item (TB basket)

Item	n	% availty	Std Dev.
RHZE	1516	76	39
RH	1458	72	41

Percentage availability for each item (RMNCAH basket)

Item	n	% availty	Std Dev.
Depo (n=2059)	3375	92	23
Ceftriaxone 1g injection	1635	62	45
Amoxicillin dispersable 125r	2085	41	44
Mama kit	1970	75	38
Measles vaccine	2915	94	21
Misoprostol 200mcg tablet	1746	69	41
ORS sachets with zinc tablet	3583	93	18
Oxytocin injection	2010	82	34
SP	3227	80	35

Percentage availability for each item (LAB basket)

Item	n	% availty	Std Dev
MRDT	3455	90	23
Blood 450 ml	791	28	42
CD4 reagent	978	47	47
Determine	2860	90	25
Stat-pack	2541	83	33
Unigold	2336	74	39
ZN reagent	1097	52	47

Comments: Availability indicators

1. On average the basket of 41 commodities was available **83%** of the time (75/90 days): down from 89% in the last quarter
2. On average **54%** of health facilities reported over 95% availability of the basket of commodities
3. For the EMHS basket, availability was lowest for Therapeutic milk F75 (15%), Therapeutic milk F100 (17%), insulin (25%), cardiac aspirin (27%) and captopril (37%). Captopril was similarly stocked out at central level. NMS is not supplying Nutritional food supplements to health facilities explaining the low stock levels
4. For the ARV basket, availability was lowest for Niverapine 50mg (50%).
5. For the RMNCAH basket, availability was lowest for Amoxicillin(41%). Amoxicillin dispersable 125 mg is being phased out and NMS now supplies 250 mg
6. For the LAB basket, availability was lowest for blood (28%) and CD4 reagent (47%)

EMHS BASKET

Note: No: is the number of facilities

Row%: is the percentage of facilities

Note: Red shows the stock levels are stocked out or overstocked and need attention

Green: means the stock levels are adequate

	Months of Stock									
	0		<2		2-4		>4		Total	
	No.	Row %	No.	Row %	No.	Row %	No.	Row %	No.	Row %
<b>Recommended first line ACT (Artemether/Lumefantrine 100/200mg)</b>										
<b>Level of Care</b>										
Clinic	22	28	39	49	7	9	11	14	79	100
HC 2s	276	15	703	38	301	16	560	30	1840	100
HC 3s	137	13	345	33	189	18	372	36	1043	100
HC 4s	15	9	66	41	23	14	56	35	160	100
General Hosp	19	20	24	25	16	17	38	39	97	100
Regional Hosp	1	11	5	56	2	22	1	11	9	100
Total	470	15	1182	37	538	17	1038	32	3228	100
<b>Owner</b>										
Govt	303	13	857	36	408	17	799	34	2367	100
PNFP	89	16	179	33	96	18	180	33	544	100
PPF	67	34	102	51	10	5	20	10	199	100
NGOs	8	18	20	46	9	21	7	16	44	100
Total	467	15	1158	37	523	17	1006	32	3154	100

	No. of facilities with over 8 MOS				
	Ownership				
	Govt	PNFP	PPF	NGOs	Total
<b>ACT (Artemether/Lumefantrine 100/200mg)</b>					
<b>Level</b>					
Clinic	0	1	2	1	4
HC 2s	234	51	4	3	292
HC 3s	165	48	2	2	217
HC 4s	31	1	0	0	32
General Hosp	8	12	1	0	21
Total	438	113	9	6	566

**Comments: ACTs**  
 Only 15% of facilities were stocked out. 9 percent point drop from 24% complete stock out in the previous quarter Apr-Jun.  
 ACT (24's) appropriately stocked at NMS from July to Sept, but stocked out at JMS  
 69% of facilities are either under or overstocked  
 Govt and PNFP owned HC2s and HC3s still formed the majority of the overstocked (>8 MOS) facilities

	Months of Stock									
	0		<2		2-4		>4		Total	
	No.	Row %	No.	Row %	No.	Row %	No.	Row %	No.	Row %
<b>Bendrofluazide (Aprinox) 5mg</b>										
<b>Level of Care</b>										
Clinic	9	27	14	42	4	12	6	18	33	100
HC 2s	146	59	42	17	23	9	37	15	248	100
HC 3s	181	41	72	16	46	10	143	32	442	100
HC 4s	46	45	11	11	15	15	31	30	103	100
General Hosp	29	38	20	26	7	9	21	27	77	100
Regional Hosp	4	80	1	20	0	0	0	0	5	100
Total	415	46	160	18	95	11	238	26	908	100
<b>Owner</b>										
Govt	344	59	50	9	35	6	159	27	588	100
PNFP	49	22	72	33	38	17	62	28	221	100
PPF	15	22	28	42	14	21	10	15	67	100
NGOs	4	20	5	25	5	25	6	30	20	100
Total	412	46	155	17	92	10	237	27	896	100

	No. of facilities with over 8 MOS				
	Ownership				
	Govt	PNFP	PPF	NGOs	Total
<b>Bendrofluazide (Aprinox) 5mg</b>					
<b>Level</b>					
Clinic	0	2	0	0	2
HC 2s	3	16	4	3	26
HC 3s	96	12	1	0	109
HC 4s	17	5	0	0	22
General Hosp	4	6	0	0	10
Total	120	41	5	3	169

**Comments: Bendrofluazide (Aprinox) 5mg**  
 46% of the facilities were stocked out on Aprinox; mainly regional Hosp and HC4s  
 Government owned HC3s formed the larger part of overly stocked (>8 MOS) facilities  
 Expected to be at HC3s and above but was available in HC2s and Clinics

	Months of Stock									
	0		<2		2-4		>4		Total	
	No.	Row %	No.	Row %	No.	Row %	No.	Row %	No.	Row %
<b>Captopril 25mg</b>										
<b>Level of Care</b>										
Clinic	6	26	12	52	2	9	3	13	23	100
HC 2s	151	68	33	15	16	7	22	10	222	100
HC 3s	209	72	26	9	23	8	34	12	292	100
HC 4s	82	84	6	6	5	5	5	5	98	100
General Hosp	30	44	18	27	7	10	13	19	68	100
Regional Hosp	7	100	0	0	0	0	0	0	7	100
Total	485	68	95	13	53	8	77	11	710	100
<b>Owner</b>										
Govt	405	95	6	1	7	2	7	2	425	100
PNFP	56	28	54	27	33	17	55	28	198	100
PPF	15	25	29	48	9	15	8	13	61	100
NGOs	6	29	4	19	4	19	7	33	21	100
Total	482	68	93	13	53	8	77	11	705	100

	No. of facilities with over 8 MOS				
	Ownership				
	Govt	PNFP	PPF	NGOs	Total
<b>Captopril 25mg</b>					
<b>Level</b>					
Clinic	0	0	2	0	2
HC 2s	0	12	1	2	15
HC 3s	3	14	1	0	18
HC 4s	1	1	0	0	2
General Hosp	0	3	1	0	4
Total	4	30	5	2	41

**Comments: Captopril 25mg**  
 Majority of the facilities (68%) were stocked out, only 8% had appropriate stock  
 Expected to be at Hospital level but was available at the lower levels  
 Similarly at central level Captopril was stocked out July to September

	Months of Stock									
	0		<2		2-4		>4		Total	
	No.	Row %	No.	Row %	No.	Row %	No.	Row %	No.	Row %
<b>Cardiac Aspirin 75/80mg</b>										
<b>Level of Care</b>										
Clinic	6	21	14	48	7	24	2	7	29	100
HC 2s	153	79	22	11	7	4	13	7	195	100
HC 3s	200	82	15	6	16	7	13	5	244	100
HC 4s	82	87	8	9	2	2	2	2	94	100
General Hosp	31	53	11	19	9	16	7	12	58	100
Regional Hosp	5	100	0	0	0	0	0	0	5	100
Total	477	76	70	11	41	7	37	6	625	100
<b>Owner</b>										
Govt	392	99	2	1	1	0	2	1	397	100
PNFP	59	41	28	20	26	18	30	21	143	100
PPF	14	23	33	55	10	17	3	5	60	100
NGOs	9	56	4	25	1	6	2	13	16	100
Total	474	77	67	11	38	6	37	6	616	100

	No. of facilities with over 8 MOS				
	Ownership				
	Govt	PNFP	PPF	NGOs	Total
<b>Cardiac Aspirin 75/80mg</b>					
<b>Level</b>					
Clinic	0	1	0	0	1
HC 2s	0	3	2	1	6
HC 3s	0	8	0	0	8
HC 4s	1	1	0	0	2
General Hosp	0	2	0	0	2
Total	1	15	2	1	19

**Comments: Cardiac Aspirin 75/80mg**  
 76% health facilities were stocked out, mainly HC4s  
 Expected to be at HC4s and above but was available at low levels of care

	Months of Stock								Total	
	0		<2		2-4		>4			
	No.	Row %	No.	Row %	No.	Row %	No.	Row %	No.	Row %
<b>Chlorhexidine 20%</b>										
<b>Level of Care</b>										
Clinic	5	26	7	37	4	21	3	16	19	100
HC 2s	136	29	95	20	118	25	127	27	476	100
HC 3s	146	26	156	28	110	20	150	27	562	100
HC 4s	40	36	37	33	12	11	23	21	112	100
General Hosp	15	26	23	40	10	18	9	16	57	100
Regional Hosp	6	86	0	0	0	0	1	14	7	100
Total	348	28	318	26	254	21	313	25	1233	100
<b>Owner</b>										
Govt	275	28	222	23	205	21	271	28	973	100
PNFP	56	31	61	34	36	20	27	15	180	100
PPF	7	16	26	58	6	13	6	13	45	100
NGOs	7	41	4	24	2	12	4	24	17	100
Total	345	28	313	26	249	21	308	25	1215	100

	No of facilities with over 8 MOS				
	Govt	PNFP	PPF	NGOs	Total
<b>Chlorhexidine 20%</b>					
<b>Level</b>					
Clinic	0	0	1	0	1
HC 2s	49	6	3	1	59
HC 3s	80	8	0	1	89
HC 4s	10	1	0	0	11
General Hosp	2	2	0	0	4
Total	141	17	4	2	164

**Comments: Chlorhexidine 20%**  
 Larger percentage of facilities (28%) were stocked out while 26% under stocked  
 Government owned HC2s and HC3s formed the larger part of the overstocked (>8MOS) facilities

	Months of Stock								Total	
	0		<2		2-4		>4			
	No.	Row %	No.	Row %	No.	Row %	No.	Row %	No.	Row %
<b>Cotrimoxazole 480mg</b>										
<b>Level of Care</b>										
Clinic	11	20	26	47	9	16	9	16	55	100
HC 2s	286	17	718	42	276	16	442	26	1722	100
HC 3s	133	14	361	38	147	15	311	33	952	100
HC 4s	23	16	81	55	21	14	23	16	148	100
General Hosp	13	18	28	38	9	12	23	32	73	100
Regional Hosp	4	57	2	29	1	14	0	0	7	100
Total	470	16	1216	41	463	16	808	27	2957	100
<b>Owner</b>										
Govt	341	15	936	41	365	16	656	29	2298	100
PNFP	92	22	163	39	62	15	99	24	416	100
PPF	18	13	80	58	19	14	20	15	137	100
NGOs	8	22	13	36	3	8	12	33	36	100
Total	459	16	1192	41	449	16	787	27	2887	100

	No of facilities with over 8 MOS				
	Govt	PNFP	PPF	NGOs	Total
<b>Cotrimoxazole 480mg</b>					
<b>Level</b>					
Clinic	0	1	2	0	3
HC 2s	172	29	7	4	212
HC 3s	143	23	0	2	168
HC 4s	10	1	0	0	11
General Hosp	7	7	1	0	15
Total	332	61	10	6	409

**Comments: Cotrimoxazole 480mg**  
 A larger percentage of facilities were understocked (41%) followed closely by the over stocked facilities (27%)  
 Government owned HC2s and HC3s formed the larger part of the overly stocked (>8 MOS)  
 Government owned facilities form the largest number of under and stocked out facilities  
 At NMS, cotrimoxazole 480mg was appropriately stocked at 10 MoS Jul-Sept

	Months of Stock								Total	
	0		<2		2-4		>4			
	No.	Row %	No.	Row %	No.	Row %	No.	Row %	No.	Row %
<b>Cotrimoxazole 960mg</b>										
<b>Level of Care</b>										
Clinic	5	16	18	58	4	13	4	13	31	100
HC 2s	177	46	104	27	37	10	71	18	389	100
HC 3s	115	14	321	38	160	19	240	29	836	100
HC 4s	14	10	57	40	32	23	38	27	142	100
General Hosp	6	7	35	42	20	24	23	27	84	100
Regional Hosp	0	0	3	50	0	0	3	50	6	100
Total	317	21	538	36	253	17	379	26	1488	100
<b>Owner</b>										
Govt	252	23	370	34	165	15	291	27	1079	100
PNFP	45	15	123	40	74	24	66	21	308	100
PPF	10	15	35	54	8	12	12	19	65	100
NGOs	7	30	5	22	6	26	5	22	23	100
Total	314	21	533	36	253	17	374	25	1475	100

	No of facilities with over 8 MOS				
	Govt	PNFP	PPF	NGOs	Total
<b>Cotrimoxazole 960mg</b>					
<b>Level</b>					
Clinic	0	0	1	2	3
HC 2s	30	14	3	0	47
HC 3s	125	20	2	0	147
HC 4s	16	0	0	0	16
General Hosp	3	4	2	0	9
Total	174	38	8	2	222

**Comments: Cotrimoxazole 960mg**  
 A larger percentage of facilities were either under stocked or stocked out (57%)  
 At NMS, it was stocked out for July & August, at JMS, it was appropriately stocked at 6 MoS  
 Government owned HC2s and HC3s were overly stocked (>8 MOS) facilities  
 Expected to be at HC3s and above but was available in HC2s

	Months of Stock								Total	
	0		<2		2-4		>4			
	No.	Row %	No.	Row %	No.	Row %	No.	Row %	No.	Row %
<b>Gilbenclamide 5mg</b>										
<b>Level of Care</b>										
Clinic	4	13	14	45	6	19	7	23	31	100
HC 2s	142	66	25	12	17	8	30	14	214	100
HC 3s	205	70	38	13	16	6	33	11	292	100
HC 4s	16	13	39	32	20	17	46	38	121	100
General Hosp	8	10	28	34	19	23	27	33	82	100
Regional Hosp	4	57	1	14	0	0	2	29	7	100
Total	379	51	145	19	78	10	145	19	747	100
<b>Owner</b>										
Govt	301	66	54	12	31	7	67	15	453	100
PNFP	59	30	48	25	31	16	58	30	196	100
PPF	11	17	32	49	10	15	12	19	65	100
NGOs	7	32	6	27	4	18	5	23	22	100
Total	378	51	140	19	76	10	142	19	736	100

	No of facilities with over 8 MOS				
	Govt	PNFP	PPF	NGOs	Total
<b>Gilbenclamide 5mg</b>					
<b>Level</b>					
Clinic	0	3	2	0	5
HC 2s	2	10	2	4	18
HC 3s	1	15	0	1	17
HC 4s	22	1	0	0	23
General Hosp	8	6	1	0	15
Total	33	35	5	5	78

**Comments: Gilbenclamide 5mg**  
 51% health facilities were stocked out of Gilbenclamide  
 At central level, Gilbenclamide is appropriately stocked at 6.5 MoS  
 Govt owned HC4s and PNFP HC3s were the most over stocked with Gilbenclamide (>8 MOS)  
 Gilbenclamide 5mg is expected to be available at HC4s and above but was available at lower levels

	Months of Stock								Total	
	0		<2		2-4		>4			
	No.	Row %	No.	Row %	No.	Row %	No.	Row %	No.	Row %
<b>Insulin short-acting</b>										
<b>Level of Care</b>										
Clinic	6	60	3	30	1	10	0	0	10	100
HC 2s	149	94	3	2	2	1	4	3	158	100
HC 3s	209	93	8	4	2	1	5	2	224	100
HC 4s	50	58	14	16	8	9	15	17	87	100
General Hosp	12	21	19	33	12	21	15	26	58	100
Regional Hosp	3	50	2	33	1	17	0	0	6	100
Total	429	79	49	9	26	5	39	7	543	100
<b>Owner</b>										
Govt	341	86	19	5	13	3	23	6	396	100
PNFP	62	59	19	18	10	10	14	13	105	100
PPF	15	58	9	35	2	8	0	0	26	100
NGOs	9	82	1	9	0	0	1	9	11	100
Total	427	79	48	9	25	5	38	7	538	100

	No of facilities with over 8 MOS				
	Ownership				
	Govt	PNFP	PPF	NGOs	Total
<b>Insulin short-acting</b>					
<b>Level</b>					
Clinic	0	1	0	0	1
HC 2s	2	1	0	0	3
HC 3s	7	0	0	0	7
HC 4s	3	4	0	1	8
General Hosp	12	6	0	1	19
Total					

**Comments: Insulin short-acting**  
 Majority (79%) of facilities were stocked out  
 Though expected to be at HC4s and above, insulin short acting was available even at lower levels

	Months of Stock								Total	
	0		<2		2-4		>4			
	No.	Row %	No.	Row %	No.	Row %	No.	Row %	No.	Row %
<b>Metformin 500mg</b>										
<b>Level of Care</b>										
Clinic	7	23	16	52	2	7	6	19	31	100
HC 2s	151	66	36	16	14	6	29	13	230	100
HC 3s	205	69	42	14	19	6	30	10	296	100
HC 4s	54	50	20	18	13	12	22	20	109	100
General Hosp	22	28	25	32	16	21	15	19	78	100
Regional Hosp	4	50	2	25	1	13	1	13	8	100
Total	443	59	141	19	65	9	103	14	752	100
<b>Owner</b>										
Govt	357	80	33	7	20	5	34	8	444	100
PNFP	63	31	62	31	31	15	46	23	202	100
PPF	12	17	37	52	8	11	14	20	71	100
NGOs	8	36	4	18	4	18	6	27	22	100
Total	440	60	136	18	63	9	100	14	739	100

	No of facilities with over 8 MOS				
	Ownership				
	Govt	PNFP	PPF	NGOs	Total
<b>Metformin 500mg</b>					
<b>Level</b>					
Clinic	0	2	1	0	3
HC 2s	1	9	4	2	16
HC 3s	6	9	0	1	16
HC 4s	10	1	1	0	12
General Hosp	3	6	2	0	11
Total	1	0	0	0	1
Total	21	27	8	3	59

**Comments: Metformin 500mg**  
 Over half of the facilities were stocked out (59%) of Metformin 500mg  
 At central level (NMS), metformin was stocked out in July  
 Metformin is expected to be available at HC4s and above but was available in HC2s, HC3s and clinics

	Months of Stock								Total	
	0		<2		2-4		>4			
	No.	Row %	No.	Row %	No.	Row %	No.	Row %	No.	Row %
<b>Nifedipine tablets 20mg</b>										
<b>Level of Care</b>										
Clinic	6	17	20	56	3	8	7	19	36	100
HC 2s	135	43	73	23	44	14	65	21	317	100
HC 3s	153	24	193	31	108	17	174	28	628	100
HC 4s	38	29	48	37	18	14	27	21	131	100
General Hosp	16	19	41	48	18	21	10	12	85	100
Regional Hosp	1	13	6	75	0	0	1	13	8	100
Total	349	29	381	32	191	16	284	24	1205	100
<b>Owner</b>										
Govt	284	36	209	27	110	14	178	23	781	100
PNFP	46	16	107	37	55	19	79	28	287	100
PPF	11	12	50	54	16	17	16	17	93	100
NGOs	6	22	9	33	6	22	6	22	27	100
Total	347	29	375	32	187	16	279	24	1188	100

	No of facilities with over 8 MOS				
	Ownership				
	Govt	PNFP	PPF	NGOs	Total
<b>Nifedipine tablets 20mg</b>					
<b>Level</b>					
Clinic	0	0	1	0	1
HC 2s	8	25	4	4	41
HC 3s	81	16	1	0	98
HC 4s	12	2	0	0	14
General Hosp	2	3	1	0	6
Regional Hosp	103	46	7	4	160
Total					

**Comments: Nifedipine tablets 20mg**  
 Larger percentage of facilities were under stocked (32%)  
 Nifedipine 20mg was stocked out at NMS for Jul-Sept  
 Govt HC3s and PNFP HC2s were the most over stocked (>8 MOS)  
 Nifedipine 20mg is expected to be available at HC3s and above but was available in HC2s and clinics

	Months of Stock								Total	
	0		<2		2-4		>4			
	No.	Row %	No.	Row %	No.	Row %	No.	Row %	No.	Row %
<b>Propranolol 40mg</b>										
<b>Level of Care</b>										
Clinic	8	22	12	33	7	19	9	25	36	100
HC 2s	151	59	39	15	30	12	38	15	258	100
HC 3s	246	69	33	9	27	8	52	15	358	100
HC 4s	72	79	4	4	1	1	14	15	91	100
General Hosp	28	49	14	25	6	11	9	16	57	100
Regional Hosp	6	86	1	14	0	0	0	0	7	100
Total	511	63	103	13	71	9	122	15	807	100
<b>Owner</b>										
Govt	441	92	7	2	9	2	21	4	478	100
PNFP	47	21	61	27	42	19	74	33	224	100
PPF	12	16	31	40	17	22	17	22	77	100
NGOs	9	41	2	9	3	14	8	36	22	100
Total	509	64	101	13	71	9	120	15	801	100

	No of facilities with over 8 MOS				
	Ownership				
	Govt	PNFP	PPF	NGOs	Total
<b>Propranolol 40mg</b>					
<b>Level</b>					
Clinic	0	2	3	0	5
HC 2s	1	16	3	2	22
HC 3s	12	26	2	1	41
HC 4s	7	6	0	0	13
General Hosp	0	3	1	0	4
Total	20	53	9	3	85

**Comments: Propranolol 40mg**  
 A Large proportion of facilities were stocked out (64%)  
 PNFP HC2s and HC3s were over (>8 MOS) stocked  
 Propranolol 40mg was out of stock at central level in period Jul to September  
 Propranolol is expected to be available in HC4s and above but was available at lower levels

	Months of Stock									
	0		<2		2-4		>4		Total	
	No.	Row %	No.	Row %	No.	Row %	No.	Row %		
<b>Ready to use Therapeutic feeds (RUTF)</b>										
<b>Level of Care</b>										
Clinic	5	71	0	0	1	14	1	14	7	100
HC 2s	152	69	36	16	14	6	20	9	222	100
HC 3s	209	55	86	23	36	10	48	13	379	100
HC 4s	41	45	26	29	13	14	11	12	91	100
General Hosp	5	11	25	54	11	24	5	11	46	100
Regional Hosp	0	0	4	57	3	43	0	0	7	100
<b>Total</b>	<b>412</b>	<b>55</b>	<b>177</b>	<b>24</b>	<b>78</b>	<b>10</b>	<b>85</b>	<b>11</b>	<b>752</b>	<b>100</b>
<b>Owner</b>										
Govt	335	56	139	23	58	10	71	12	603	100
PNFP	59	48	37	30	15	12	12	10	123	100
PPF	10	100	0	0	0	0	0	0	10	100
NGOs	7	58	0	0	4	33	1	8	12	100
<b>Total</b>	<b>411</b>	<b>55</b>	<b>176</b>	<b>24</b>	<b>77</b>	<b>10</b>	<b>84</b>	<b>11</b>	<b>748</b>	<b>100</b>

	No of facilities with over 8 MOS				
	Ownership				
	Govt	PNFP	PPF	NGOs	Total
<b>Ready to use Therapeutic feeds (RUTF)</b>					
<b>Level</b>					
HC 2s	4	1	0	0	5
HC 3s	22	3	0	0	25
HC 4s	4	0	0	0	4
General Hosp	30	4	0	0	34
Regional Hospital					
<b>Total</b>					

**Comments: Ready to use Therapeutic feeds (RUTF)**  
 A high percentage of facilities (55%) were stocked out followed by the under stocked (<2MOS) at 24%  
 Government owned HC3s were most over (>8MOS) stocked facilities  
 This item is currently not procured by NMS

	Months of Stock									
	0		<2		2-4		>4		Total	
	No.	Row %	No.	Row %	No.	Row %	No.	Row %		
<b>Thearapeutic milk F100 (100Kcal/100ml)</b>										
<b>Level of Care</b>										
Clinic	5	100	0	0	0	0	0	0	5	100
HC 2s	142	97	1	1	0	0	3	2	146	100
HC 3s	200	94	7	3	2	1	5	2	214	100
HC 4s	46	78	3	5	5	9	5	9	59	100
General Hosp	11	34	9	28	8	25	4	13	32	100
Regional Hosp	1	17	4	67	0	0	1	17	6	100
<b>Total</b>	<b>405</b>	<b>88</b>	<b>24</b>	<b>5</b>	<b>15</b>	<b>3</b>	<b>18</b>	<b>4</b>	<b>462</b>	<b>100</b>
<b>Owner</b>										
Govt	329	89	14	4	13	4	14	4	370	100
PNFP	58	81	9	13	2	3	3	4	72	100
PPF	10	91	0	0	0	0	1	9	11	100
NGOs	7	88	1	13	0	0	0	0	8	100
<b>Total</b>	<b>404</b>	<b>88</b>	<b>24</b>	<b>5</b>	<b>15</b>	<b>3</b>	<b>18</b>	<b>4</b>	<b>461</b>	<b>100</b>

	No of facilities with over 8 MOS				
	Ownership				
	Govt	PNFP	PPF	NGOs	Total
<b>Thearapeutic milk F100 (100Kcal/100ml)</b>					
<b>Level</b>					
HC 2s	1	0	0	0	1
HC 3s	3	1	0	0	4
HC 4s	1	0	0	0	1
General Hosp	1	1	0	0	2
Regional Hospital	6	2	0	0	8
<b>Total</b>					

**Comments: Thearapeutic milk F100 (100Kcal/100ml)**  
 Majority (88%) of facilities were stocked out  
 Expected to be at Hospitals but was available in lower levels  
 This item is currently not procured by NMS

	Months of Stock									
	0		<2		2-4		>4		Total	
	No.	Row %	No.	Row %	No.	Row %	No.	Row %		
<b>Thearapeutic milk F75 (75Kcal/100ml)</b>										
<b>Level of Care</b>										
Clinic	5	100	0	0	0	0	0	0	5	100
HC 2s	142	98	1	1	0	0	2	1	145	100
HC 3s	205	95	1	1	5	2	4	2	215	100
HC 4s	50	81	2	3	2	3	8	13	62	100
General Hosp	11	34	9	28	7	22	5	16	32	100
Regional Hosp	1	17	3	50	1	17	1	17	6	100
<b>Total</b>	<b>414</b>	<b>89</b>	<b>16</b>	<b>3</b>	<b>15</b>	<b>3</b>	<b>20</b>	<b>4</b>	<b>465</b>	<b>100</b>
<b>Owner</b>										
Govt	335	91	9	2	10	3	15	4	369	100
PNFP	61	80	7	9	4	5	4	5	76	100
PPF	10	91	0	0	0	0	1	9	11	100
NGOs	7	88	0	0	1	13	0	0	8	100
<b>Total</b>	<b>413</b>	<b>89</b>	<b>16</b>	<b>3</b>	<b>15</b>	<b>3</b>	<b>20</b>	<b>4</b>	<b>464</b>	<b>100</b>

	No of facilities with over 8 MOS				
	Ownership				
	Govt	PNFP	PPF	NGOs	Total
<b>Thearapeutic milk F75 (75Kcal/100ml)</b>					
<b>Level</b>					
HC 2s	1	0	0	0	1
HC 3s	3	0	0	0	3
HC 4s	2	0	0	0	2
General Hosp	0	1	0	0	1
Regional Hospital	1	0	0	0	1
<b>Total</b>	<b>7</b>	<b>1</b>	<b>0</b>	<b>0</b>	<b>8</b>

**Comments: Thearapeutic milk F75 (75Kcal/100ml)**  
 Majority of the facilities were stocked out (89%)  
 Expected to be at Hospitals but was available in lower levels  
 This item is currently not procured by NMS

ARV BASKET

	Months of Stock								Total	
	0		<2		2-4		>4			
	No.	Row %	No.	Row %	No.	Row %	No.	Row %		
<b>Tenofovir/Lamivudine/Efavirenz (TDF/3TC/EFV) 300mg/300mg/600mg</b>										
<b>Level of Care</b>										
Clinic	4	17	13	54	4	17	3	13	24	100
HC 2s	132	42	74	24	58	19	47	15	311	100
HC 3s	49	6	317	36	233	26	287	32	886	100
HC 4s	6	4	50	36	34	24	51	36	141	100
General Hosp	6	7	29	35	20	24	28	34	83	100
Regional Hosp	0	0	2	29	2	29	3	43	7	100
<b>Total</b>	<b>197</b>	<b>14</b>	<b>485</b>	<b>33</b>	<b>351</b>	<b>24</b>	<b>419</b>	<b>29</b>	<b>1452</b>	<b>100</b>
<b>Owner</b>										
Govt	144	13	361	33	253	23	342	31	1100	100
PNFP	37	13	101	36	76	27	69	24	283	100
PPF	10	25	15	38	10	25	5	13	40	100
NGOs	5	22	5	22	11	48	2	9	23	100
<b>Total</b>	<b>196</b>	<b>14</b>	<b>482</b>	<b>33</b>	<b>350</b>	<b>24</b>	<b>418</b>	<b>29</b>	<b>1446</b>	<b>100</b>

	No of facilities with over 8 MOS				
	Ownership				
	Govt	PNFP	PPF	NGOs	Total
<b>TDF/3TC/EFV 300mg/300mg/600mg</b>					
<b>Level</b>					
Clinic	0	0	1	1	2
HC 2s	16	3	2	1	22
HC 3s	92	13	0	0	105
HC 4s	17	1	0	0	18
General Hosp	3	4	0	0	7
Referral Hospital	1	0	0	0	1
<b>Total</b>	<b>129</b>	<b>21</b>	<b>3</b>	<b>2</b>	<b>155</b>

**Comments: TDF/3TC/EFV 300mg/300mg/600mg**  
 TDF/3TC/EFV 300mg/300mg/600mg was under stocked in 33% of the facilities that reported  
 The Aug-Sept ARV Bi-monthly report indicated appropriate stock at 3 MoS  
 At NMS there was appropriate stock levels Apr-June at 4.7 MOS, and 30% availability in Jul-Sept  
 At JMS, there was 30% availability in Jul-Sept  
 Government facilities were the majority with stock levels over 8 MOS

	Months of Stock								Total	
	0		<2		2-4		>4			
	No.	Row %	No.	Row %	No.	Row %	No.	Row %		
<b>Zidovudine /Lamivudine/Nevirapine (AZT/3TC/NVP)</b>										
<b>Level of Care</b>										
Clinic	5	20	13	52	5	20	2	8	25	100
HC 2s	126	57	26	12	29	13	40	18	221	100
HC 3s	62	8	209	27	193	25	303	40	767	100
HC 4s	3	2	52	38	40	29	42	31	137	100
General Hosp	4	5	32	43	20	27	19	25	75	100
Regional Hosp	0	0	1	14	2	29	4	57	7	100
<b>Total</b>	<b>200</b>	<b>16</b>	<b>333</b>	<b>27</b>	<b>289</b>	<b>24</b>	<b>410</b>	<b>33</b>	<b>1232</b>	<b>100</b>
<b>Owner</b>										
Govt	151	16	248	26	208	22	339	36	946	100
PNFP	36	16	69	30	66	29	57	25	228	100
PPF	7	22	10	31	9	28	6	19	32	100
NGOs	4	19	5	24	6	29	6	29	21	100
<b>Total</b>	<b>198</b>	<b>16</b>	<b>332</b>	<b>27</b>	<b>289</b>	<b>24</b>	<b>408</b>	<b>33</b>	<b>1227</b>	<b>100</b>

	No of facilities with over 8 MOS				
	Ownership				
	Govt	PNFP	PPF	NGOs	Total
<b>Zidovudine /Lamivudine/Nevirapine (AZT/3TC/NVP)</b>					
<b>Level</b>					
Clinic	17	4	2	0	23
HC 2s	132	16	0	2	150
HC 3s	18	3	0	0	21
HC 4s	2	3	0	0	5
General Hosp	2	0	0	0	2
<b>Total</b>	<b>171</b>	<b>26</b>	<b>2</b>	<b>2</b>	<b>201</b>

**Comments: Zidovudine /Lamivudine/Nevirapine (AZT/3TC/NVP)**  
 33% of facilities were over stocked  
 The Aug-Sept ARV Bi-monthly report indicated appropriate stock at 4 MoS  
 HC2's consisted of the the biggest percentage of facilities stocked out  
 At central level AZT/3TC/NVP was adequately stocked in April-June

	Months of Stock								Total	
	0		<2		2-4		>4			
	No.	Row %	No.	Row %	No.	Row %	No.	Row %		
<b>Zidovudine/Lamivudine (AZT/3TC) 300mg/150mg</b>										
<b>Level of Care</b>										
Clinic	3	13	10	44	3	13	7	30	23	100
HC 2s	134	70	18	9	14	7	25	13	191	100
HC 3s	71	12	129	21	115	19	304	49	619	100
HC 4s	10	8	35	28	19	15	61	49	125	100
General Hosp	5	7	23	31	19	26	27	37	74	100
Regional Hosp	0	0	2	29	1	14	4	57	7	100
<b>Total</b>	<b>223</b>	<b>22</b>	<b>217</b>	<b>21</b>	<b>171</b>	<b>17</b>	<b>428</b>	<b>41</b>	<b>1039</b>	<b>100</b>
<b>Owner</b>										
Govt	171	22	155	20	107	14	359	45	792	100
PNFP	41	21	50	25	52	26	57	29	200	100
PPF	6	23	9	35	5	19	6	23	26	100
NGOs	4	25	2	13	7	44	3	19	16	100
<b>Total</b>	<b>222</b>	<b>22</b>	<b>216</b>	<b>21</b>	<b>171</b>	<b>17</b>	<b>425</b>	<b>41</b>	<b>1034</b>	<b>100</b>

	No of facilities with over 8 MOS				
	Ownership				
	Govt	PNFP	PPF	NGOs	Total
<b>Zidovudine/Lamivudine (AZT/3TC) 300mg/150mg</b>					
<b>Level</b>					
Clinic	1	1	1	3	3
HC 2s	6	3	1	10	10
HC 3s	166	15	0	181	181
HC 4s	35	4	0	39	39
General Hosp	7	7	0	14	14
Referral Hosp	1	0	0	1	1
<b>Total</b>	<b>216</b>	<b>30</b>	<b>2</b>	<b>248</b>	<b>248</b>

**Comments: Zidovudine/Lamivudine (AZT/3TC) 300mg/150mg**  
 Only 17% of facilities that reported had appropriate stock; 83% were either over stocked or understocked.  
 Govt owned HC3s still formed the largest part of the over stocked facilities  
 The Aug-Sept ARV Bi-monthly report indicated appropriate stock at 5 MoS  
 At central level, availability was at 85%

	Months of Stock								Total	
	0		<2		2-4		>4			
	No.	Row %	No.	Row %	No.	Row %	No.	Row %		
<b>Tenofovir/Lamivudine (TDF/3TC) 300mg/300mg</b>										
<b>Level of Care</b>										
Clinic	5	22	12	52	4	17	2	9	23	100
HC 2s	133	65	25	12	20	10	26	13	204	100
HC 3s	73	11	167	25	141	21	289	43	670	100
HC 4s	9	7	47	35	26	19	53	39	135	100
General Hosp	7	9	20	26	26	34	23	30	76	100
Regional Hosp	0	0	1	14	4	57	2	29	7	100
<b>Total</b>	<b>227</b>	<b>20</b>	<b>272</b>	<b>24</b>	<b>221</b>	<b>20</b>	<b>395</b>	<b>35</b>	<b>1115</b>	<b>100</b>
<b>Owner</b>										
Govt	174	20	192	23	156	18	333	39	855	100
PNFP	39	19	63	30	54	26	52	25	208	100
PPF	6	22	10	37	5	19	6	22	27	100
NGOs	5	26	6	32	4	21	4	21	19	100
<b>Total</b>	<b>224</b>	<b>20</b>	<b>271</b>	<b>24</b>	<b>219</b>	<b>20</b>	<b>395</b>	<b>36</b>	<b>1109</b>	<b>100</b>

	No of facilities with over 8 MOS				
	Ownership				
	Govt	PNFP	PPF	NGOs	Total
<b>Tenofovir/Lamivudine (TDF/3TC) 300mg/300mg</b>					
<b>Level</b>					
Clinic	0	0	1	0	1
HC 2s	9	1	1	1	12
HC 3s	161	11	0	0	172
HC 4s	25	1	0	0	26
General Hosp	4	5	1	0	10
<b>Total</b>	<b>1</b>	<b>0</b>	<b>0</b>	<b>0</b>	<b>1</b>

**Comments: Tenofovir/Lamivudine (TDF/3TC) 300mg/300mg**  
 35% of the facilities over stocked followed by the under stocked facilities  
 Govt owned HC3s are the most over stocked facilities, with 39% >4 MoS  
 Although widely expected to be available at HC 3 was also available at HC2  
 At central level, it was appropriately stocked at 6 MoS in Jul-Aug

	Months of Stock								Total	
	0		<2		2-4		>4			
	No.	Row %	No.	Row %	No.	Row %	No.	Row %		
<b>Nevirapine (NVP) 200mg</b>										
<b>Level of Care</b>										
Clinic	4	17	7	30	5	22	7	30	23	100
HC 2s	135	68	13	7	20	10	30	15	198	100
HC 3s	71	12	132	22	105	17	305	50	613	100
HC 4s	12	10	26	21	34	27	52	42	124	100
General Hosp	7	9	27	36	18	24	24	32	76	100
Regional Hosp	0	0	2	29	2	29	3	43	7	100
Total	229	22	207	20	184	18	421	40	1041	100
<b>Owner</b>										
Govt	174	22	149	19	127	16	337	43	787	100
PNFP	42	20	47	23	47	23	70	34	206	100
PPF	6	25	8	33	5	21	5	21	24	100
NGOs	5	28	3	17	4	22	6	33	18	100
Total	227	22	207	20	183	18	418	40	1035	100

	No of facilities with over 8 MOS				
	Ownership				
	Govt	PNFP	PPF	NGOs	Total
<b>Nevirapine (NVP) 200mg</b>					
<b>Level</b>					
Clinic	0	0	2	2	4
HC 2s	12	4	2	0	18
HC 3s	174	20	0	1	195
HC 4s	30	3	0	0	33
General Hosp	6	6	1	0	13
Referral Hosp	3	0	0	0	3
Total	225	33	5	3	266
<b>Comments: Nevirapine (NVP) 200mg</b>					
40% of the facilities had >4MOS of Nevirapine 200mg					
Govt owned HC3s and HC4s the most over stocked facilities					
Nevirapine 200mg is expected to be available at HC3s and above but was available at HC2					
Understocked at NMS but appropriately stocked at JMS					

	Months of Stock								Total	
	0		<2		2-4		>4			
	No.	Row %	No.	Row %	No.	Row %	No.	Row %		
<b>Nevirapine (NVP) 50mg</b>										
<b>Level of Care</b>										
Clinic	3	20	6	40	5	33	1	7	15	100
HC 2s	153	79	13	7	14	7	14	7	194	100
HC 3s	227	45	101	20	56	11	117	23	502	100
HC 4s	56	52	20	19	9	8	22	21	107	100
General Hosp	23	34	17	25	10	15	17	25	67	100
Regional Hosp	0	0	3	60	0	0	2	40	5	100
Total	462	52	160	18	94	11	173	19	890	100
<b>Owner</b>										
Govt	393	58	108	16	55	8	122	18	679	100
PNFP	49	28	43	25	35	20	48	27	175	100
PPF	12	63	6	32	0	0	1	5	19	100
NGOs	6	46	2	15	4	31	1	8	13	100
Total	460	52	159	18	94	11	172	19	886	100
<b>Comments: Nevirapine (NVP) 50mg</b>										
52% facilities were stocked out of Niverapine 50mg										
Government owned HC3s most over (>4MOS) stocked facilities										
Stocked out at Central level (NMS)										

	No of facilities with over 8 MOS				
	Ownership				
	Govt	PNFP	PPF	NGOs	Total
<b>Nevirapine (NVP) 50mg</b>					
<b>Level</b>					
Clinic	6	1	0	7	7
HC 2s	57	15	0	72	72
HC 3s	13	1	0	14	14
HC 4s	3	4	1	8	8
General Hosp	2	0	0	2	2
Total	81	21	1	103	103
<b>Comments: Nevirapine (NVP) 50mg</b>					
52% facilities were stocked out of Niverapine 50mg					
Government owned HC3s most over (>4MOS) stocked facilities					
Stocked out at Central level (NMS)					

	Months of Stock								Total	
	0		<2		2-4		>4			
	No.	Row %	No.	Row %	No.	Row %	No.	Row %		
<b>Efavirenz (EFV) 600mg</b>										
<b>Level of Care</b>										
Clinic	2	13	6	38	3	19	5	31	16	100
HC 2s	119	69	23	13	10	6	20	12	172	100
HC 3s	82	13	139	22	120	19	287	46	628	100
HC 4s	12	10	53	43	17	14	42	34	124	100
General Hosp	4	6	31	46	13	19	20	29	68	100
Regional Hosp	0	0	1	33	1	33	1	33	3	100
Total	219	22	253	25	164	16	375	37	1011	100
<b>Owner</b>										
Govt	162	20	191	23	131	16	347	42	831	100
PNFP	40	19	58	28	54	26	54	26	206	100
PPF	6	23	8	31	5	19	7	27	26	100
NGOs	4	21	6	32	3	16	6	32	19	100
Total	212	20	263	24	193	18	414	38	1082	100
<b>Comments: Efavirenz (EFV) 600mg</b>										
Only 16% of facilities had appropriate stock and 37% were overstocked										
Government HC3s remain the most over stocked facilities, at 46% (>4MOS) and majority in number(>8MOS)										
The Aug-Sept ARV bi-monthly report indicated appropriate stock levels at 4 MoS										

	No of facilities with over 8 MOS				
	Ownership				
	Govt	PNFP	PPF	NGOs	Total
<b>Efavirenz (EFV) 600mg</b>					
<b>Level</b>					
Clinic	0	0	0	2	2
HC 2s	11	2	2	0	15
HC 3s	186	12	0	1	199
HC 4s	23	5	0	0	28
General Hosp	4	5	0	0	9
Referral Hosp	1	0	0	0	1
Total	225	24	2	3	254
<b>Comments: Efavirenz (EFV) 600mg</b>					
Only 16% of facilities had appropriate stock and 37% were overstocked					
Government HC3s remain the most over stocked facilities, at 46% (>4MOS) and majority in number(>8MOS)					
The Aug-Sept ARV bi-monthly report indicated appropriate stock levels at 4 MoS					

	Months of Stock								Total	
	0		<2		2-4		>4			
	No.	Row %	No.	Row %	No.	Row %	No.	Row %		
<b>Abacavir/Lamivudine (ABC/3TC) 60mg/30mg (Paediatric)</b>										
<b>Level of Care</b>										
Clinic	4	27	3	20	3	20	5	33	15	100
HC 2s	135	76	12	7	11	6	20	11	178	100
HC 3s	78	13	138	23	102	17	278	47	596	100
HC 4s	12	10	32	26	26	21	52	43	122	100
General Hosp	5	8	21	32	12	18	28	42	66	100
Regional Hosp	0	0	1	14	0	0	6	86	7	100
Total	234	24	207	21	154	16	389	40	984	100
<b>Owner</b>										
Govt	173	23	149	20	122	16	320	42	764	100
PNFP	48	25	51	27	27	14	64	34	190	100
PPF	6	50	3	25	1	8	2	17	12	100
NGOs	5	36	4	29	3	21	2	14	14	100
Total	232	24	207	21	153	16	388	40	980	100
<b>Comments: Abacavir/Lamivudine (ABC/3TC) 60mg/30mg (Paediatric)</b>										
40% of the facilities over stocked										
Govt HC3s 47% (>8MOS) and HC2s (>8MOS) were most over stocked facilities										
The Aug-Sept ARV bi-monthly report indicated over stock at 7 MoS at the facility										
At NMS, ABC/3TC 60mg/30mg is stocked out										

	No of facilities with over 8 MOS				
	Ownership				
	Govt	PNFP	PPF	NGOs	Total
<b>Abacavir/Lamivudine (ABC/3TC) 60mg/30mg (Paediatric)</b>					
<b>Level</b>					
Clinic	6	2	1	9	9
HC 2s	157	12	0	169	169
HC 3s	34	1	0	35	35
HC 4s	9	5	0	14	14
General Hosp	6	0	0	6	6
Regional Hospital	212	20	1	233	233
Total	225	33	5	3	266
<b>Comments: Abacavir/Lamivudine (ABC/3TC) 60mg/30mg (Paediatric)</b>					
40% of the facilities over stocked					
Govt HC3s 47% (>8MOS) and HC2s (>8MOS) were most over stocked facilities					
The Aug-Sept ARV bi-monthly report indicated over stock at 7 MoS at the facility					
At NMS, ABC/3TC 60mg/30mg is stocked out					



**TB BASKET**

	Months of Stock								No of facilities with over 8 MOS					
	0		<2		2-4		>4		Ownership					
	No.	Row %	No.	Row %	No.	Row %	No.	Row %	Govt	PNFP	PPP	NGOs	Total	
<b>(RHZE) blister strip 150/75/400/275 mg</b>														
<b>Level of Care</b>														
Clinic	5	36	2	14	4	29	3	21	14	100				
HC 2s	138	78	11	6	11	6	17	10	177	100				
HC 3s	101	19	141	26	79	15	215	40	536	100				
HC 4s	21	18	35	29	27	23	35	29	119	100				
General Hosp	7	11	17	27	13	20	27	42	64	100				
Regional Hosp	1	14	4	57	1	14	1	14	7	100				
<b>Total</b>	<b>273</b>	<b>30</b>	<b>210</b>	<b>23</b>	<b>135</b>	<b>15</b>	<b>298</b>	<b>33</b>	<b>917</b>	<b>100</b>				
<b>Owner</b>														
Govt	198	28	161	23	104	15	247	35	711	100				
PNFP	58	34	42	25	25	15	44	26	169	100				
PPP	8	36	5	23	4	18	5	23	22	100				
NGOs	8	62	1	8	2	15	2	15	13	100				
<b>Total</b>	<b>272</b>	<b>30</b>	<b>209</b>	<b>23</b>	<b>135</b>	<b>15</b>	<b>298</b>	<b>33</b>	<b>915</b>	<b>100</b>				
<b>Comments: (RHZE) blister strip 150/75/400/275 mg</b>														
33% facilities were over stocked and 30% stocked out														
At central level (NMS), it is appropriately stocked 7MOS , Jul-Aug														
Govt owned HC3s form the highest proportion of over stocked facilities														
Although expected to be stocked upto HC3s and above, it was also available at HC2														

	Months of Stock								No of facilities with over 8 MOS					
	0		<2		2-4		>4		Ownership					
	No.	Row %	No.	Row %	No.	Row %	No.	Row %	Govt	PNFP	PPP	NGOs	Total	
<b>RH blister strip 150/75 mg</b>														
<b>Level of Care</b>														
Clinic	5	42	2	17	2	17	3	25	12	100				
HC 2s	138	79	9	5	7	4	20	12	174	100				
HC 3s	118	24	111	22	59	12	213	43	501	100				
HC 4s	17	16	27	25	20	18	46	42	110	100				
General Hosp	9	15	15	25	10	17	25	42	59	100				
Regional Hosp	2	29	3	43	0	0	2	29	7	100				
<b>Total</b>	<b>289</b>	<b>34</b>	<b>167</b>	<b>19</b>	<b>98</b>	<b>11</b>	<b>309</b>	<b>36</b>	<b>863</b>	<b>100</b>				
<b>Owner</b>														
Govt	211	31	131	19	82	12	258	38	682	100				
PNFP	59	41	32	22	12	8	42	29	145	100				
PPP	9	47	3	16	3	16	4	21	19	100				
NGOs	8	57	1	7	1	7	4	29	14	100				
<b>Total</b>	<b>287</b>	<b>33</b>	<b>167</b>	<b>19</b>	<b>98</b>	<b>11</b>	<b>308</b>	<b>36</b>	<b>860</b>	<b>100</b>				
<b>Comments: RH blister strip 150/75 mg</b>														
36% facilities were over stocked and 34% stocked out facilities														
Over stocked at central level with 11 MOS for Jul-Aug														
Govt HC3s and HC4s most over stocked facilities														

**RMNCAH BASKET**

	Months of Stock									
	0		<2		2-4		>4		Total	
	No.	Row %	No.	Row %	No.	Row %	No.	Row %	No.	Row %
<b>Depo- Provera</b>										
<b>Level of Care</b>										
Clinic	9	18	17	35	9	18	14	29	49	100
HC 2s	192	13	209	14	170	11	967	63	1538	100
HC 3s	106	13	108	13	78	9	537	65	829	100
HC 4s	7	5	18	14	13	10	91	71	129	100
General Hosp	9	18	8	16	5	10	28	56	50	100
Regional Hosp	1	25	1	25	1	25	1	25	4	100
<b>Total</b>	<b>324</b>	<b>13</b>	<b>361</b>	<b>14</b>	<b>276</b>	<b>11</b>	<b>1638</b>	<b>63</b>	<b>2599</b>	<b>100</b>
<b>Owner</b>										
Govt	219	10	240	11	214	10	1438	68	2111	100
PNFP	67	25	54	20	34	13	114	42	269	100
PPF	26	19	52	39	17	13	39	29	134	100
NGOs	6	20	10	33	5	17	9	30	30	100
<b>Total</b>	<b>318</b>	<b>13</b>	<b>356</b>	<b>14</b>	<b>270</b>	<b>11</b>	<b>1600</b>	<b>63</b>	<b>2544</b>	<b>100</b>

	No of facilities with over 8 MOS				
	Ownership				
	Govt	PNFP	PPF	NGOs	Total
<b>Depo- Provera</b>					
<b>Level</b>					
Clinic	2	3	3	0	8
HC 2s	710	44	19	3	776
HC 3s	398	27	1	2	428
HC 4s	70	6	0	0	76
General Hosp	11	6	1	0	18
Regional Hospital	1	0	0	0	1
<b>Total</b>	<b>1,192</b>	<b>86</b>	<b>24</b>	<b>5</b>	<b>1,307</b>

**Comments: Depo- Provera**  
 63% of the facilities were over stocked  
 Majority (71%) of HC4s were over stocked (>4MOS)  
 Govt HC2s and HC3s most (>8MOS) over stocked  
 Over stocked at NMS at > 17MOS July to Sept,

	Months of Stock									
	0		<2		2-4		>4		Total	
	No.	Row %	No.	Row %	No.	Row %	No.	Row %	No.	Row %
<b>Sulfadoxine/ Pyrimethamine tablet</b>										
<b>Level of Care</b>										
Clinic	9	21	20	46	6	14	9	21	44	100
HC 2s	307	25	194	16	109	9	641	51	1251	100
HC 3s	247	31	131	16	106	13	317	40	801	100
HC 4s	46	36	25	20	20	16	37	29	128	100
General Hosp	16	22	33	46	11	15	12	17	72	100
Regional Hosp	4	50	3	38	1	13	0	0	8	100
<b>Total</b>	<b>629</b>	<b>27</b>	<b>406</b>	<b>18</b>	<b>253</b>	<b>11</b>	<b>1016</b>	<b>44</b>	<b>2304</b>	<b>100</b>
<b>Owner</b>										
Govt	502	29	211	12	165	10	851	49	1729	100
PNFP	89	24	115	31	64	17	108	29	376	100
PPF	22	18	64	52	14	11	23	19	123	100
NGOs	6	19	9	28	5	16	12	38	32	100
<b>Total</b>	<b>619</b>	<b>27</b>	<b>399</b>	<b>18</b>	<b>248</b>	<b>11</b>	<b>994</b>	<b>44</b>	<b>2260</b>	<b>100</b>

	No of facilities with over 8 MOS				
	Ownership				
	Govt	PNFP	PPF	NGOs	Total
<b>Sulfadoxine/ Pyrimethamine tablet</b>					
<b>Level</b>					
Clinic	1	0	4	0	5
HC 2s	468	41	9	5	523
HC 3s	187	27	3	1	218
HC 4s	20	1	0	0	21
General Hosp	6	3	0	1	10
<b>Total</b>	<b>682</b>	<b>72</b>	<b>16</b>	<b>7</b>	<b>777</b>

**Comments: Sulfadoxine/ Pyrimethamine tablet**  
 44% facilities were over stocked and over quarter (27%) stocked out  
 Govt HC2s and HC3s most over (>8MOS) stocked

	Months of Stock									
	0		<2		2-4		>4		Total	
	No.	Row %	No.	Row %	No.	Row %	No.	Row %	No.	Row %
<b>ORS Sachets with zinc tablet</b>										
<b>Level of Care</b>										
Clinic	9	20	19	41	10	22	8	17	46	100
HC 2s	173	10	547	33	307	18	638	38	1665	100
HC 3s	88	9	350	36	190	20	348	36	976	100
HC 4s	24	16	71	47	28	19	28	19	151	100
General Hosp	11	14	26	33	17	22	25	32	79	100
Regional Hosp	2	33	4	67	0	0	0	0	6	100
<b>Total</b>	<b>307</b>	<b>11</b>	<b>1017</b>	<b>35</b>	<b>552</b>	<b>19</b>	<b>1047</b>	<b>36</b>	<b>2923</b>	<b>100</b>
<b>Owner</b>										
Govt	196	9	745	33	443	20	868	39	2252	100
PNFP	76	17	166	37	76	17	132	29	450	100
PPF	20	15	71	55	19	15	20	15	130	100
NGOs	6	19	10	31	4	13	12	38	32	100
<b>Total</b>	<b>298</b>	<b>10</b>	<b>992</b>	<b>35</b>	<b>542</b>	<b>19</b>	<b>1032</b>	<b>36</b>	<b>2864</b>	<b>100</b>

	No of facilities with over 8 MOS				
	Ownership				
	Govt	PNFP	PPF	NGOs	Total
<b>ORS Sachets with zinc tablet</b>					
<b>Level</b>					
Clinic	0	1	4	0	5
HC 2s	321	37	4	7	369
HC 3s	155	35	1	2	193
HC 4s	14	1	0	0	15
General Hosp	7	8	2	0	17
<b>Total</b>	<b>497</b>	<b>82</b>	<b>11</b>	<b>9</b>	<b>599</b>

**Comments: ORS Sachets with zinc tablet**  
 36% of the facilities were over stocked  
 Govt HC2s and HC3s most over stocked (>8MOS)

	Months of Stock									
	0		<2		2-4		>4		Total	
	No.	Row %	No.	Row %	No.	Row %	No.	Row %	No.	Row %
<b>Measles Vaccine</b>										
<b>Level of Care</b>										
Clinic	8	62	4	31	1	8	0	0	13	100
HC 2s	288	23	430	35	223	18	296	24	1237	100
HC 3s	92	11	331	40	153	19	250	30	826	100
HC 4s	12	11	47	44	18	17	30	28	107	100
General Hosp	7	14	21	43	9	18	12	25	49	100
Regional Hosp	1	25	1	25	1	25	1	25	4	100
<b>Total</b>	<b>408</b>	<b>18</b>	<b>834</b>	<b>37</b>	<b>405</b>	<b>18</b>	<b>589</b>	<b>26</b>	<b>2236</b>	<b>100</b>
<b>Owner</b>										
Govt	308	17	656	37	325	18	487	27	1776	100
PNFP	67	19	143	40	64	18	85	24	359	100
PPF	19	37	21	40	6	12	6	12	52	100
NGOs	6	29	5	24	3	14	7	33	21	100
<b>Total</b>	<b>400</b>	<b>18</b>	<b>825</b>	<b>37</b>	<b>398</b>	<b>18</b>	<b>585</b>	<b>27</b>	<b>2208</b>	<b>100</b>

	No of facilities with over 8 MOS				
	Ownership				
	Govt	PNFP	PPF	NGOs	Total
<b>Measles Vaccine</b>					
<b>Level</b>					
HC 2s	139	15	1	2	157
HC 3s	114	24	1	1	140
HC 4s	13	0	0	0	13
General Hosp	2	2	1	0	5
<b>Total</b>	<b>269</b>	<b>41</b>	<b>3</b>	<b>3</b>	<b>316</b>

**Comments: Measles Vaccine**  
 A larger portion of the facilities were under-stocked (37%)  
 The vaccine was appropriately stocked at NMS in the period July and Aug  
 Govt and PNFP HC2s and HC3s most over stocked (>8MOS)

	Months of Stock								Total	
	0		<2		2-4		>4			
	No.	Row %	No.	Row %	No.	Row %	No.	Row %		
<b>Misoprostol 200mcg Tablet</b>										
<b>Level of Care</b>										
Clinic	6	27	10	46	2	9	4	18	22	100
HC 2s	172	59	34	12	28	10	57	20	291	100
HC 3s	154	29	64	12	67	13	238	46	523	100
HC 4s	28	25	19	17	21	19	45	40	113	100
General Hosp	10	14	23	32	9	12	31	43	73	100
Regional Hosp	3	38	0	0	2	25	3	38	8	100
Total	373	36	150	15	129	13	378	37	1030	100
<b>Owner</b>										
Govt	281	37	81	11	87	11	319	42	768	100
PNFP	69	39	34	19	29	17	44	25	176	100
PPF	12	21	26	45	11	19	9	16	58	100
NGOs	8	44	2	11	2	11	6	33	18	100
Total	370	36	143	14	129	13	378	37	1020	100

	No of facilities with over 8 MOS				
	Ownership				
	Govt	PNFP	PPF	NGOs	Total
<b>Misoprostol 200mcg Tablet</b>					
<b>Level</b>					
Clinic	0	1	2	0	3
HC 2s	34	4	3	0	41
HC 3s	176	11	0	2	189
HC 4s	28	1	0	0	29
General Hosp	12	6	0	0	18
Regional Hospital	3	0	0	0	3
Total	253	23	5	2	283

**Comments: Misoprostol 200mcg Tablet**  
 Only 13% of facilities were appropriately stocked  
 Misoprostol was stocked out at NMS in March and a new batch received in June  
 Govt HC3s most over stocked facilities (>8MOS)

	Months of Stock								Total	
	0		<2		2-4		>4			
	No.	Row %	No.	Row %	No.	Row %	No.	Row %		
<b>Amoxicillin dispersible 125mg tablet</b>										
<b>Level of Care</b>										
Clinic	5	24	10	48	2	10	4	19	21	100
HC 2s	339	66	89	17	29	6	58	11	515	100
HC 3s	364	77	52	11	20	4	38	8	474	100
HC 4s	82	84	9	9	3	3	4	4	98	100
General Hosp	26	62	13	31	0	0	3	7	42	100
Regional Hosp	7	100	0	0	0	0	0	0	7	100
Total	823	71	173	15	54	5	107	9	1157	100
<b>Owner</b>										
Govt	711	78	94	10	30	3	72	8	907	100
PNFP	80	50	49	31	12	8	18	11	159	100
PPF	15	26	25	43	7	12	11	19	58	100
NGOs	8	53	2	13	3	20	2	13	15	100
Total	814	72	170	15	52	5	103	9	1139	100

	No of facilities with over 8 MOS				
	Ownership				
	Govt	PNFP	PPF	NGOs	Total
<b>Amoxicillin dispersible 125mg tablet</b>					
<b>Level</b>					
Clinic	0	0	1	0	1
HC 2s	18	9	2	1	30
HC 3s	17	4	1	0	22
HC 4s	3	0	0	0	3
General Hosp	1	0	1	0	2
Regional Hospital	39	13	5	1	58
Total					

**Comments: Amoxicillin dispersible 125mg tablet**  
 Over half of the facilities were stocked out (71%), especially HC4s and HC3s  
 The new guidelines have shifted from using 125mg to 250mg tablet  
 NMS now procures 250mg tablet  
 Govt HC2s and HC3s most over stocked facilities  
 Facilities can report stock status of 250mg tablets using the current tool until it is updated

	Months of Stock								Total	
	0		<2		2-4		>4			
	No.	Row %	No.	Row %	No.	Row %	No.	Row %		
<b>Ceftriaxone 1g Injection</b>										
<b>Level of Care</b>										
Clinic	7	14	35	71	3	6	4	8	49	100
HC 2s	159	41	159	41	45	12	29	7	392	100
HC 3s	227	55	116	28	29	7	39	10	411	100
HC 4s	46	33	68	49	15	11	11	8	140	100
General Hosp	12	14	46	52	24	27	6	7	88	100
Regional Hosp	0	0	5	71	1	14	1	14	7	100
Total	451	42	429	40	117	11	90	8	1087	100
<b>Owner</b>										
Govt	372	68	99	18	38	7	40	7	549	100
PNFP	56	15	210	58	59	16	38	11	363	100
PPF	16	13	98	77	9	7	5	4	128	100
NGOs	5	15	13	39	9	27	6	18	33	100
Total	449	42	420	39	115	11	89	8	1073	100

	No of facilities with over 8 MOS				
	Ownership				
	Govt	PNFP	PPF	NGOs	Total
<b>Ceftriaxone 1g Injection</b>					
<b>Level</b>					
HC 2s	6	3	1	2	12
HC 3s	12	7	1	0	20
HC 4s	6	1	0	0	7
General Hosp	1	0	0	0	1
Total	25	11	2	2	40

**Comments: Ceftriaxone 1g Injection**  
 A larger percentage of the facilities were under stocked & stocked out (82%), especially Government facilities  
 Ceftriaxone was understocked stocked at NMS from July-Sept  
 Expected to be at HC4s and above but was available in lower levels

	Months of Stock								Total	
	0		<2		2-4		>4			
	No.	Row %	No.	Row %	No.	Row %	No.	Row %		
<b>Oxytocin Injection</b>										
<b>Level of Care</b>										
Clinic	7	23	15	50	3	10	5	17	30	100
HC 2s	158	34	115	25	64	14	125	27	462	100
HC 3s	112	17	152	23	96	14	316	47	676	100
HC 4s	16	14	36	31	20	17	43	37	115	100
General Hosp	12	18	33	49	10	15	13	19	68	100
Regional Hosp	1	14	1	14	2	29	3	43	7	100
Total	306	23	352	26	195	14	505	37	1358	100
<b>Owner</b>										
Govt	235	25	175	19	117	13	407	44	934	100
PNFP	53	17	126	41	57	19	70	23	306	100
PPF	8	10	43	51	15	18	21	84	100	
NGOs	5	21	6	25	6	25	7	29	24	100
Total	301	22	350	26	195	15	502	37	1348	100

	No of facilities with over 8 MOS				
	Ownership				
	Govt	PNFP	PPF	NGOs	Total
<b>Oxytocin Injection</b>					
<b>Level</b>					
Clinic	0	2	3	0	5
HC 2s	47	18	4	3	72
HC 3s	192	15	3	1	211
HC 4s	29	0	0	0	29
General Hosp	3	0	1	0	4
Total	1	0	0	0	1
Total	272	35	11	4	322

**Comments: Oxytocin Injection**  
 Larger percentage of the facilities over-stocked (37%) followed by over a quarter of them under stocked  
 Appropriate stock at Central level July-Sept at 5 MoS  
 Govt owned HC3s and HC2s form the most over stocked facilities (>8MOS)  
 Expected to be at HC3s and above but was available in lower levels

	Months of Stock								Total	
	0		<2		2-4		>4			
	No.	Row %	No.	Row %	No.	Row %	No.	Row %	No.	Row %
<b>Mama Kit</b>										
<b>Level of Care</b>										
Clinic	8	62	4	31	0	0	1	8	13	100
HC 2s	193	44	72	16	51	12	123	28	439	100
HC 3s	198	28	153	22	111	16	235	34	697	100
HC 4s	32	27	41	35	20	17	25	21	118	100
General Hosp	16	29	15	27	5	9	20	36	56	100
Regional Hosp	4	67	0	0	1	17	1	17	6	100
Total	451	34	285	21	188	14	405	31	1329	100
<b>Owner</b>										
Govt	358	35	239	23	160	16	264	26	1021	100
PNFP	66	28	26	11	21	9	124	52	237	100
PPF	11	31	13	37	2	6	9	26	35	100
NGOs	8	57	2	14	1	7	3	21	14	100
Total	443	34	280	21	184	14	400	31	1307	100

	No of facilities with over 8 MOS				
	Govt	PNFP	PPF	NGOs	Total
<b>Mama Kit</b>					
<b>Level</b>					
Clinic	0	0	1	0	1
HC 2s	25	44	3	2	74
HC 3s	97	47	3	0	147
HC 4s	9	2	0	0	11
General Hospital	3	12	0	0	15
Total	134	105	7	2	248

**Comments: Mama Kit**

A large portion of the facilities were stocked out (35%)  
 Stocked out at NMS in Aug-Sept  
 Govt owned HC2s and HC3s formed the larger part of the overly (>8MOS) stocked

LAB BASKET

	Months of Stock								No of facilities with over 8 MOS					
	0		<2		2-4		>4		Ownership					
	No.	Row %	No.	Row %	No.	Row %	No.	Row %	Govt	PNFP	PPF	NGOs	Total	
<b>Determine HIV Screening test</b>														
<b>Level of Care</b>														
Clinic	6	11	30	56	5	9	13	24	54	100				
HC 2s	275	28	328	33	164	17	223	23	990	100				
HC 3s	99	10	343	35	211	21	335	34	988	100				
HC 4s	5	3	58	39	38	26	47	32	148	100				
General Hosp	8	10	32	41	30	38	9	11	79	100				
Regional Hosp	1	14	5	71	0	0	1	14	7	100				
Total	394	17	796	35	448	20	628	28	2266	100				
<b>Owner</b>														
Govt	293	18	534	33	319	20	483	30	1629	100				
PNFP	69	16	168	39	96	22	102	23	435	100				
PPF	19	14	68	50	23	17	26	19	136	100				
NGOs	5	13	19	50	5	13	9	24	38	100				
Total	386	17	789	35	443	20	620	28	2238	100				
<b>Comments: Determine HIV Screening test</b>														
A larger portion of the facilities were under stocked (35%)														
At central level Determine was stocked out in July & August														
Govt owned HC2s and HC3s formed the larger part of the overly (>8MOS) stocked														

	Months of Stock								No of facilities with over 8 MOS					
	0		<2		2-4		>4		Ownership					
	No.	Row %	No.	Row %	No.	Row %	No.	Row %	Govt	PNFP	PPF	NGOs	Total	
<b>Stat -pack HIV Confirmatory rapid tests</b>														
<b>Level of Care</b>														
Clinic	7	15	14	30	10	21	16	34	47	100				
HC 2s	244	38	80	12	60	9	265	41	649	100				
HC 3s	118	13	166	19	136	15	462	52	882	100				
HC 4s	25	18	44	31	16	11	57	40	142	100				
General Hosp	15	20	23	31	18	24	19	25	75	100				
Regional Hosp	3	43	1	14	2	29	1	14	7	100				
Total	412	23	328	18	242	13	820	46	1802	100				
<b>Owner</b>														
Govt	299	23	214	17	155	12	621	48	1289	100				
PNFP	76	21	78	22	63	18	140	39	357	100				
PPF	22	22	25	25	16	16	39	38	102	100				
NGOs	8	26	7	23	6	19	10	32	31	100				
Total	405	23	324	18	240	14	810	46	1779	100				
<b>Comments: Stat -pack HIV Confirmatory rapid tests</b>														
A larger percentage of the facilities were over stocked (46%)														
Govt owned HC2s and HC3s and PNFP HC2s and HC3s formed the larger part of the overstocked (>8MOS) facilities														

	Months of Stock								No of facilities with over 8 MOS					
	0		<2		2-4		>4		Ownership					
	No.	Row %	No.	Row %	No.	Row %	No.	Row %	Govt	PNFP	PPF	NGOs	Total	
<b>Unigold HIV RDT Tie-breaker test</b>														
<b>Level of Care</b>														
Clinic	14	38	11	30	5	14	7	19	37	100				
HC 2s	242	53	45	10	43	9	128	28	458	100				
HC 3s	155	23	81	12	91	14	340	51	667	100				
HC 4s	30	25	17	14	18	15	55	46	120	100				
General Hosp	17	25	18	27	13	19	20	29	68	100				
Regional Hosp	3	43	2	29	0	0	2	29	7	100				
Total	461	34	174	13	170	13	552	41	1357	100				
<b>Owner</b>														
Govt	337	35	105	11	111	12	414	43	967	100				
PNFP	82	30	41	15	44	16	106	39	273	100				
PPF	21	30	18	25	10	14	22	31	71	100				
NGOs	10	35	9	31	4	14	6	21	29	100				
Total	450	34	173	13	169	13	548	41	1340	100				
<b>Comments: Unigold HIV RDT</b>														
A larger percentage of the facilities were over stocked (41%) followed by facilities completely stocked out (35%)														
At central level, unigold was understocked														
Govt owned HC2s, HC3s and HC4s as well as PNFP HC3s formed the overly (>8MOS) stocked														

	Months of Stock								No of facilities with over 8 MOS					
	0		<2		2-4		>4		Ownership					
	No.	Row %	No.	Row %	No.	Row %	No.	Row %	Govt	PNFP	PPF	NGOs	Total	
<b>CD4 reagent Specify</b>														
<b>Level of Care</b>														
Clinic	5	31	3	19	2	13	6	38	16	100				
HC 2s	137	85	8	5	4	3	12	8	161	100				
HC 3s	154	60	24	9	17	7	60	24	255	100				
HC 4s	28	33	18	21	11	13	28	33	85	100				
General Hosp	7	25	7	25	5	18	9	32	28	100				
Regional Hosp	2	40	1	20	1	20	1	20	5	100				
Total	333	61	61	11	40	7	116	21	550	100				
<b>Owner</b>														
Govt	253	62	38	9	29	7	90	22	410	100				
PNFP	58	55	19	18	11	11	17	16	105	100				
PPF	13	72	2	11	0	0	3	17	18	100				
NGO	7	64	1	9	0	0	3	27	11	100				
Total	331	61	60	11	40	7	113	21	544	100				
<b>Comments: CD4 reagent Specify</b>														
A larger percentage of the facilities were completely stocked out (61%), mainly HC2's and HC3's formed the largest percentage of stocked out facilities														
At central level, CD4 reagent were under stocked out in July to September														
Expected to be at HC4s and above but was available in lower levels														

	Months of Stock								No of facilities with over 8 MOS					
	0		<2		2-4		>4		Ownership					
	No.	Row %	No.	Row %	No.	Row %	No.	Row %	Govt	PNFP	PPF	NGOs	Total	
<b>Malaria Rapid Diagnostic tests</b>														
<b>Level of Care</b>														
Clinic	7	16	20	44	6	13	12	27	45	100				
HC 2s	375	26	510	35	181	13	382	26	1448	100				
HC 3s	243	27	290	32	119	13	256	28	908	100				
HC 4s	47	35	54	40	14	10	20	15	135	100				
General Hosp	19	27	28	39	7	10	17	24	71	100				
Regional Hosp	5	71	1	14	1	14	0	0	7	100				
Total	696	27	903	35	328	13	687	26	2614	100				
<b>Owner</b>														
Govt	602	31	654	34	210	11	473	24	1939	100				
PNFP	56	12	157	34	79	17	173	37	465	100				
PPF	23	19	63	52	17	14	19	16	122	100				
NGOs	4	11	11	31	8	23	12	34	35	100				
Total	685	27	885	35	314	12	677	26	2561	100				
<b>Comments: Malaria Rapid Diagnostic tests</b>														
Larger percentage of the facilities under stocked (35%) followed by 27% stocked out														
Malaria RDTs were stocked out at NMS in July & Aug, JMS had appropriate stock at 4 MoS														
Govt and PNFP owned HC2s and HC3s formed the larger part of the overly (>8MOS) stocked														

	Months of Stock								No of facilities with over 8 MOS					
	0		<2		2-4		>4		Ownership					
	No.	Row %	No.	Row %	No.	Row %	No.	Row %	Govt	PNFP	PPF	NGOs	Total	
<b>ZN reagent for AFB</b>														
<b>Level of Care</b>														
Clinic	2	20	5	50	1	10	2	20	10	100				
HC 2s	146	84	16	9	5	3	7	4	174	100				
HC 3s	193	55	76	22	38	11	46	13	353	100				
HC 4s	42	60	17	24	6	9	5	7	70	100				
General Hosp	8	33	9	38	3	13	4	17	24	100				
Regional Hosp	1	50	1	50	0	0	0	0	2	100				
Total	392	62	124	20	53	8	64	10	633	100				
<b>Owner</b>														
Govt	311	64	86	18	45	9	47	10	489	100				
PNFP	65	60	29	27	3	3	12	11	109	100				
PPF	8	47	5	29	2	12	2	12	17	100				
NGOs	6	55	2	18	3	27	0	0	11	100				
Total	390	62	122	20	53	9	61	10	626	100				
<b>Comments: ZN reagent for AFB</b>														
Majority (62%) of the facilities were stocked out														
Stocked out at NMS from July to Sept														
Govt HC3s most over (>8MOS) stocked														

	Months of Stock								No of facilities with over 8 MOS					
	0		<2		2-4		>4		Ownership					
	No.	Row %	No.	Row %	No.	Row %	No.	Row %	Govt	PNFP	PPF	NGOs	Total	
<b>Blood 450 ml</b>														
<b>Level of Care</b>														
Clinic	4	100	0	0	0	0	0	0	4	100				
HC 2s	140	100	0	0	0	0	0	0	140	100				
HC 3s	177	89	8	4	5	3	10	5	200	100				
HC 4s	37	63	16	27	4	7	2	3	59	100				
General Hosp	12	43	12	43	3	11	1	4	28	100				
Regional Hosp	1	50	1	50	0	0	0	0	2	100				
Total	371	86	37	9	12	3	13	3	433	100				
<b>Owner</b>														
Govt	293	88	22	7	8	2	10	3	333	100				
PNFP	59	75	14	18	3	4	3	4	79	100				
PPF	11	92	0	0	1	8	0	0	12	100				
NGOs	7	88	1	13	0	0	0	0	8	100				
Total	370	86	37	9	12	3	13	3	432	100				
<b>Comments: Blood 450 ml</b>														
Majority (86%) of the facilities were stocked out of Blood 450ml														
Although expected to be available at HC4s and above, was available in some lower levels facilities														