



UGANDA NATIONAL METEOROLOGICAL AUTHORITY (UNMA)

Plot 22-28, Luzira, Port Bell Road

P. O. Box 7025, Kampala, UGANDA

Tel: +256-414-251798; Fax: +256-414-251797

Email: [info@unma.go.ug](mailto:info@unma.go.ug)

Website: [www.unma.go.ug](http://www.unma.go.ug)



## DEKADAL AGROMET BULLETIN

**Period:** 1<sup>st</sup>-10<sup>th</sup> November, 2022

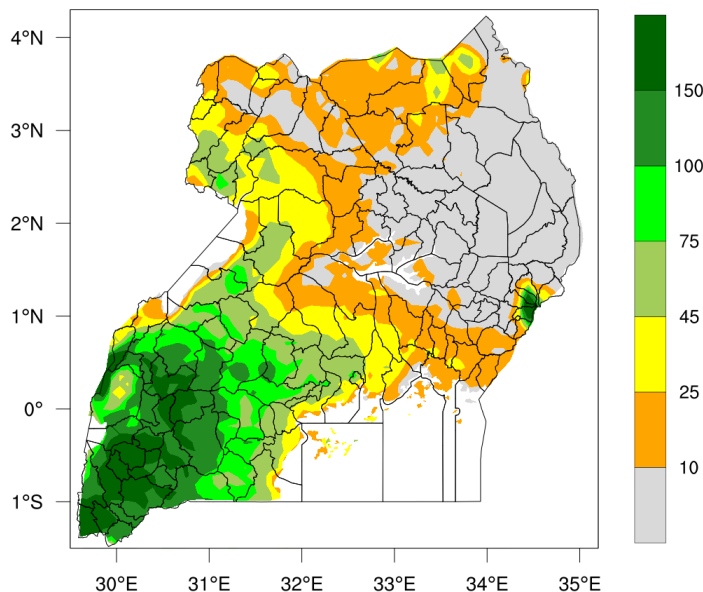
**Vol.11, Issue No: 1**

**Date of Issue:** 1<sup>st</sup> November, 2022

### 1. Ten-day rainfall forecast (1<sup>st</sup> – 10<sup>th</sup> November, 2022)

The rainfall forecast for this period shows a relaxation and reduction of rainfall activity in the entire northern (West Nile, Acholi, Lango and Karamoja sub regions), eastern including central in the immediate proximity of Lake Victoria. In contrast, the areas in south western (Kigezi and Ankole subregion) and central western (Toro and Bunyoro subregions) are expected to experience wet conditions during the first ten days of this month. Overall, south western is expected to be wetter than the rest of the country. For details refer to figure 1 below.

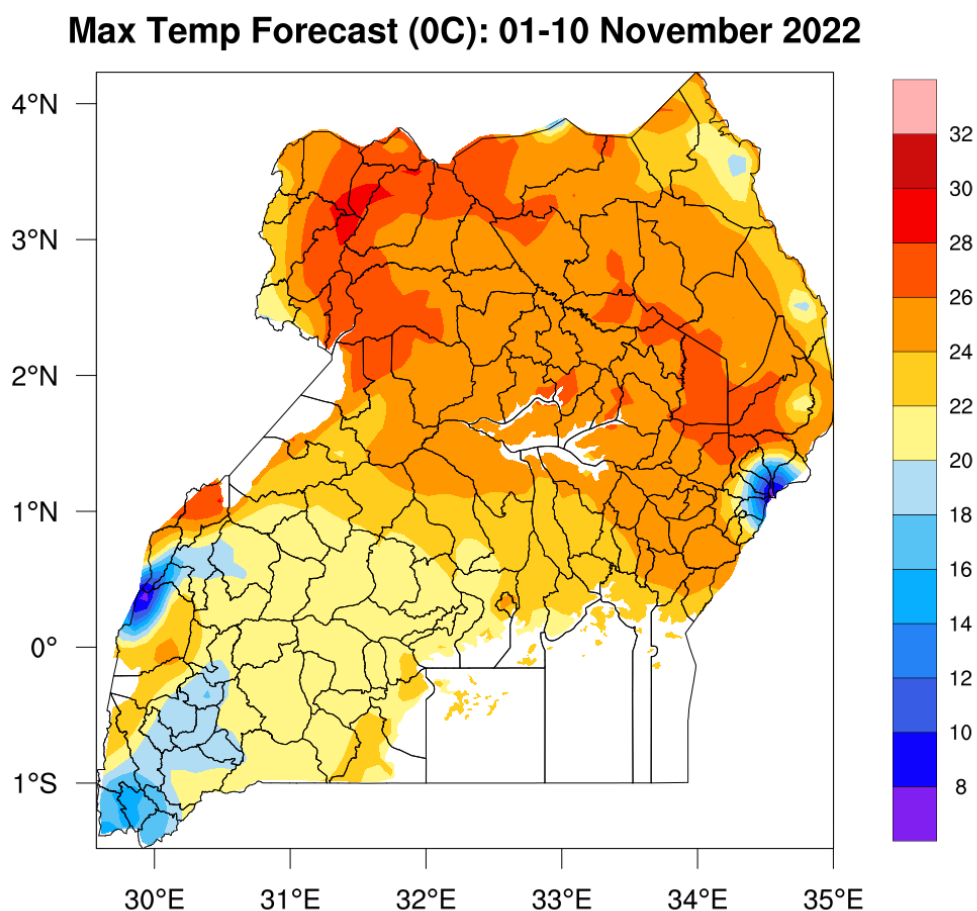
Rainfall Forecast (mm): 01-10 November 2022



**Figure 1: Expected spatial rainfall distribution across the country from 1<sup>st</sup> – 10<sup>th</sup> November, 2022**

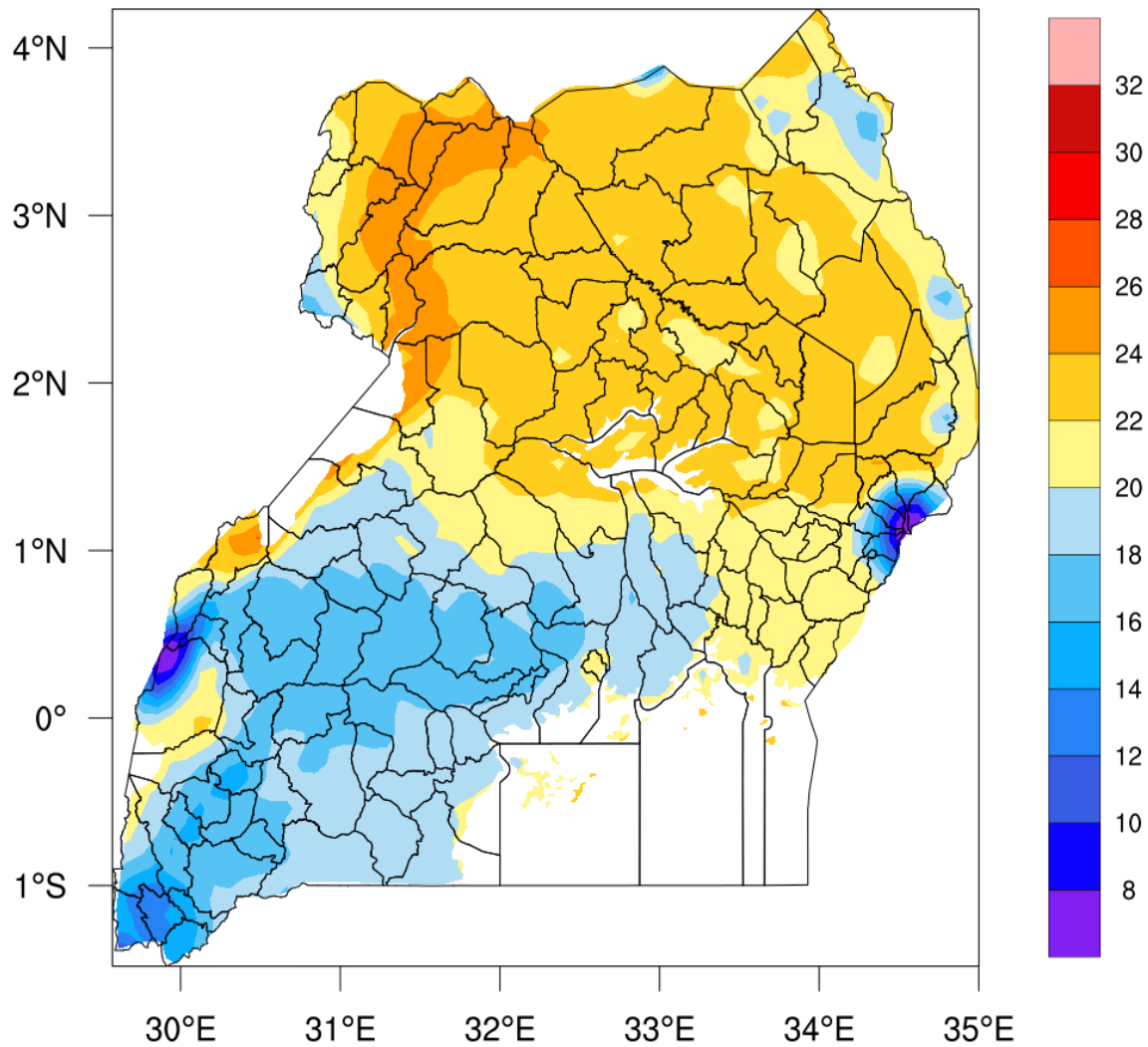
#### 4. Ten day forecast of temperature extremes (1<sup>st</sup> – 10<sup>th</sup> November, 2022)

- As for temperature extremes, the forecast shows that the portion of the country stretching from Busia district, through central up to Lake Albert and extending up to northern is expected to be warm but with much warmer conditions in West Nile and Acholi subregions. The latter is expected to experience maximum temperatures ranging from 30<sup>o</sup>C to 32<sup>o</sup>C.
- The lowest temperatures of up to 8<sup>o</sup>C are forecast to occur over the much higher areas in the highlands of Rwenzori and Elgon while Kigezi sub region and central western , as well as some areas in central and Karamoja are expected to experience minimum temperatures in the range 16<sup>o</sup>C to 20<sup>o</sup>C. Refer to figures 2a and 2b below.



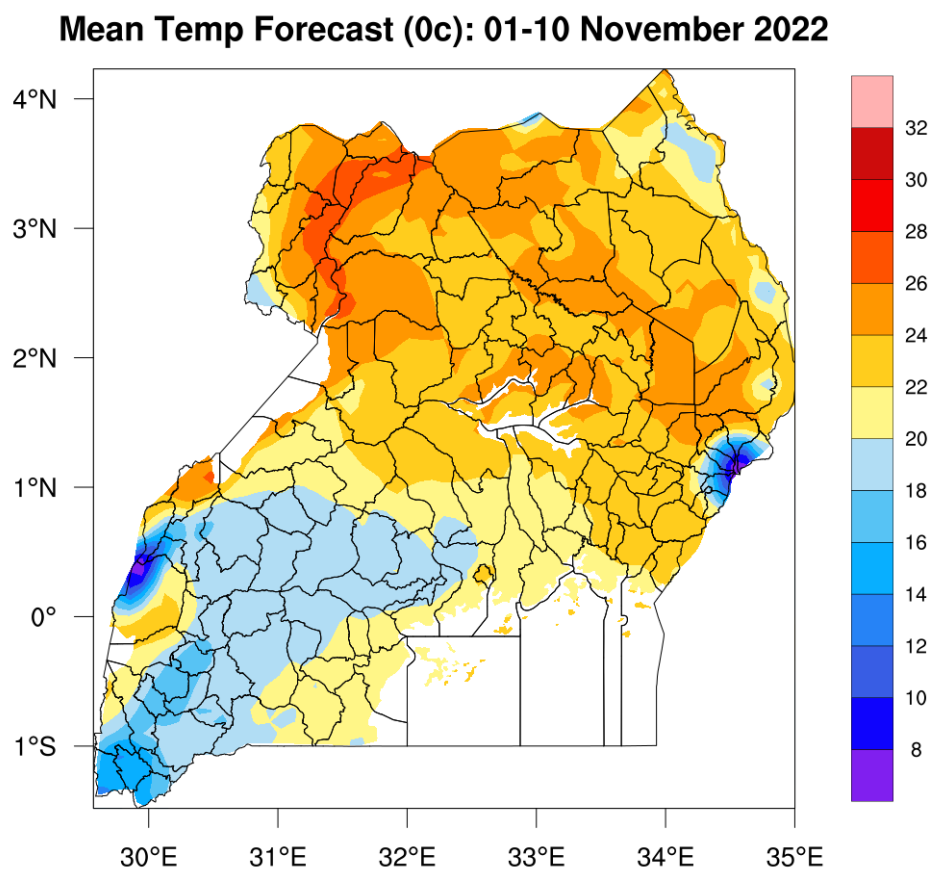
**Figure 2a: Expected spatial maximum temperature distribution across the country from 1<sup>st</sup> – 10<sup>th</sup> November, 2022**

### Min Temp Forecast (0C): 01-10 November 2022



**Figure 2b: Expected spatial minimum temperature distribution across the country from 1<sup>st</sup> – 10<sup>th</sup> November, 2022**

Higher average daily temperatures ranging from 26°C to 28°C, are expected in the northern sector of the country, compared to the rest of the country. Further details are available in figure 3 below.



**Figure 3: Expected spatial mean temperature distribution across the country from 1<sup>st</sup> – 10<sup>th</sup> November, 2022**

## Potential impacts of Dekadal rainfall forecast

- The forecast is depicting a reduction of rainfall activity in West Nile, Acholi, Lango, Karamoja sub regions and eastern parts of the country. This is a potential indicator for the onset of dry spells.
- Cattle corridor is expected to become water stressed over time which is likely to affect the quality and quantity of pasture.
- Fish ponds are expected to experience a reduction in water levels in all areas where rainfall activity is relaxing as it gives way to dry conditions

### Advisories:

- The communities in the entire cattle corridor, northern and eastern are advised to put in place water storage facilities for immediate harvesting of water (or rainwater) for future use in order to avert devastating effects of prolonged dryspells.
- Those expecting to harvest should adhere to good post-harvest handling practices. For instance , drying on clean hard surfaces or use facilities like polythene papers and tarpaulin to avoid comprising on quality.
- Pruning of tree crops and mulching should be undertaken to conserve moisture in south western, central western and in highlands of the Rwenzori
- Monitor and report any emergence of crop pests, animal parasites and plant diseases to technical staff at subcounty and district.
- Bush burning should not be undertaken as fire can ravage vegetation, trees, homesteads and property.
- Drinking water should be boiled for safety of life

### *Explanatory notes*

*A dekad is a ten-day period, whereby: 1 dekad = 10 or 11 Days and (9 or 8 days for the last dekad of February) One year is composed of 36 dekads.*