



MINISTRY OF HEALTH

THE WEEKLY EPIDEMIOLOGICAL BULLETIN

WEEK 46: 9th-15th Nov 2020

Dear Reader,

We are pleased to share our 46th weekly epidemiological bulletin for the year 2020. This epidemiological bulletin serves to inform all stakeholders at district, national, and global levels on disease trends, public health surveillance and interventions undertaken in detecting, preventing and responding to public health events in Uganda on a weekly basis.

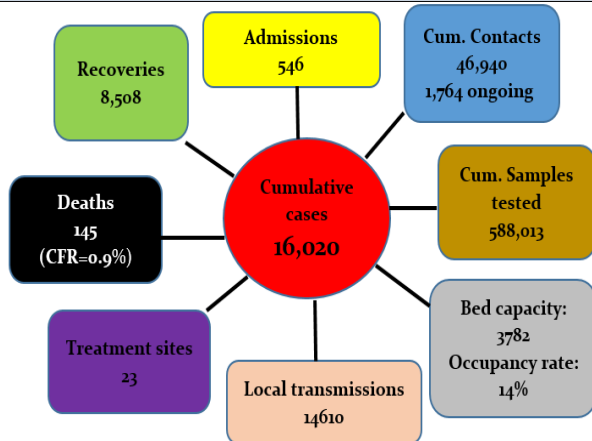
In this issue, we showcase the following updates

- ◆ Uganda updates on COVID-19
- ◆ Health worker infections amidst COVID-19 response
- ◆ Suspected rabies (Dog bites)
- ◆ TB Emergency response updates
- ◆ National suspected epidemic prone diseases
- ◆ Public Health emergencies in neighbor countries
- ◆ National, regional and district weekly surveillance reporting

For comments please contact: Dr. Allan Muruta, Commissioner, Department of Integrated Epidemiology, Surveillance and Public Health Emergencies - MoH; P.O BOX 7272 Kampala, Tel: 080010066 (toll free); Email: esd@health.go.ug or esduganda22@gmail.com

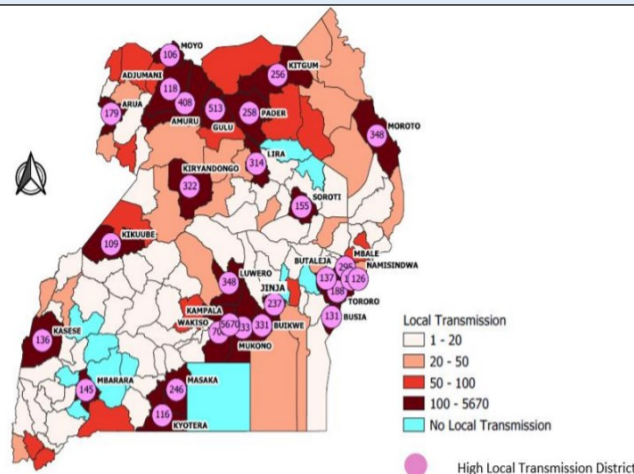
COVID-19 as of 15th November 2020

Fig 1a: COVID-19 Statistics



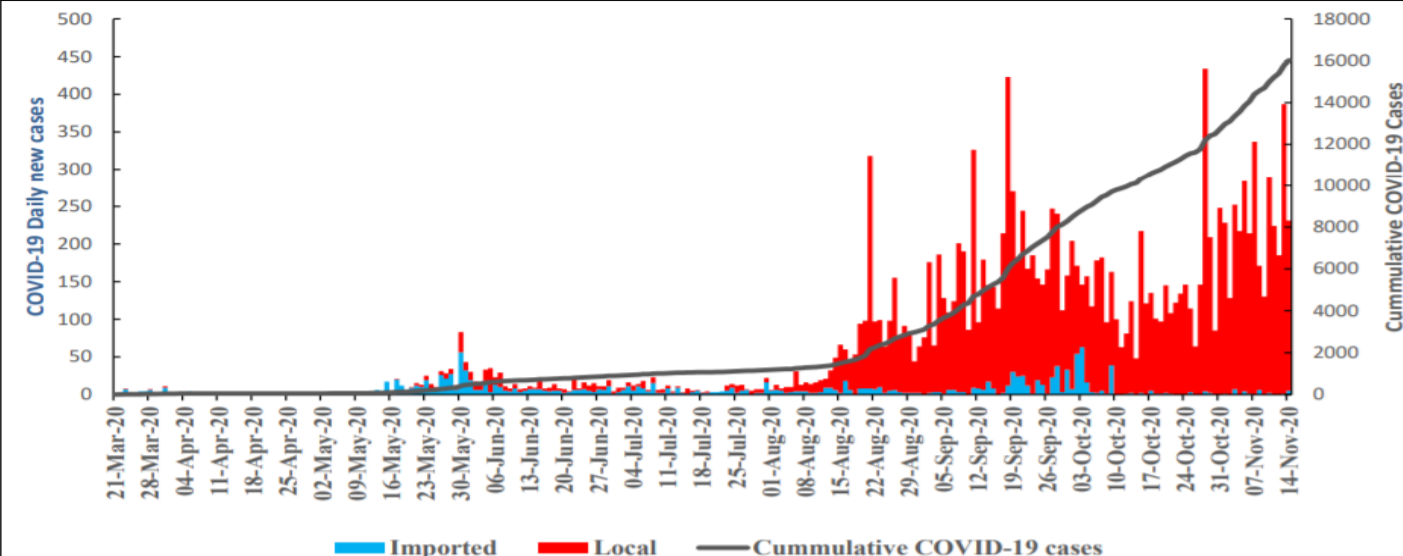
Source: COVID-19 SitRep

Fig 1b: Districts with local transmission (N=13167)



Source: COVID-19 SitRep

Fig 1c: Epidemic curve of COVID-19 as of 11st Nov 2020 (n=16,020)



Source: COVID-19 Situational Report

COVID-19 infections among health workers (n=1065) as 1st November 2020

- The criteria for classifying Health Workers (HW) includes all staff involved in direct and indirect provision of care to patients
- These include: Clinicians, Physicians other Allied Health Professionals and auxiliary health workers such as Cleaner, Drivers, laundry personnel, x-ray physicians among others
- 57% of HW cases registered are males
- **Common factors include:** Congregations in workplaces, Non adherence to PPE, use of communal transport, Prolonged Turn around Time among others

Fig 2a: Distribution of HW infections by district

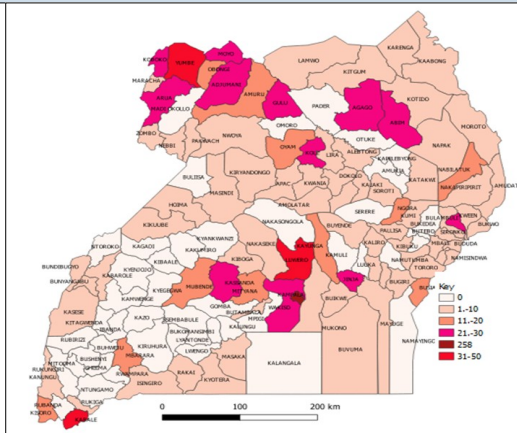
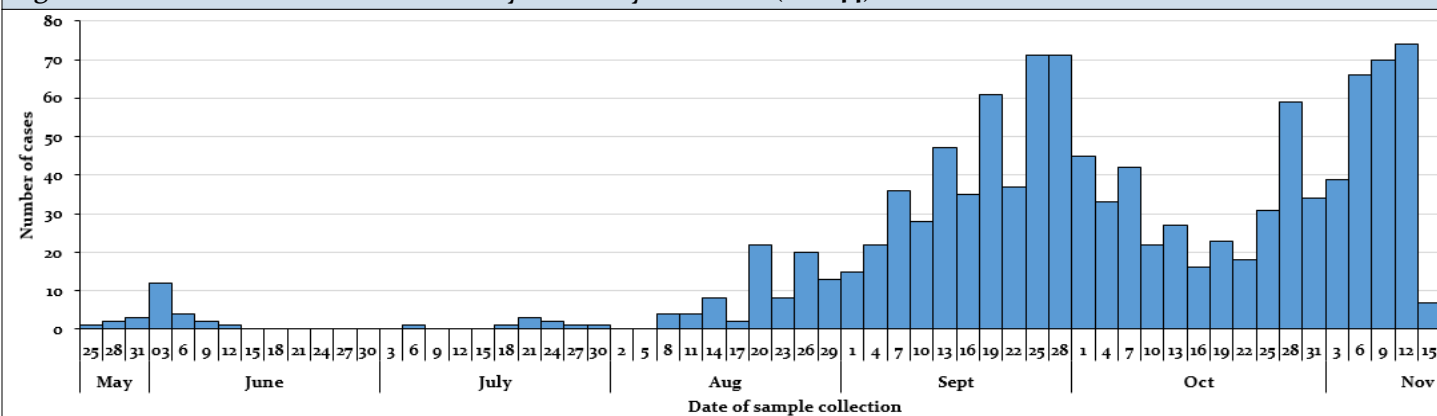


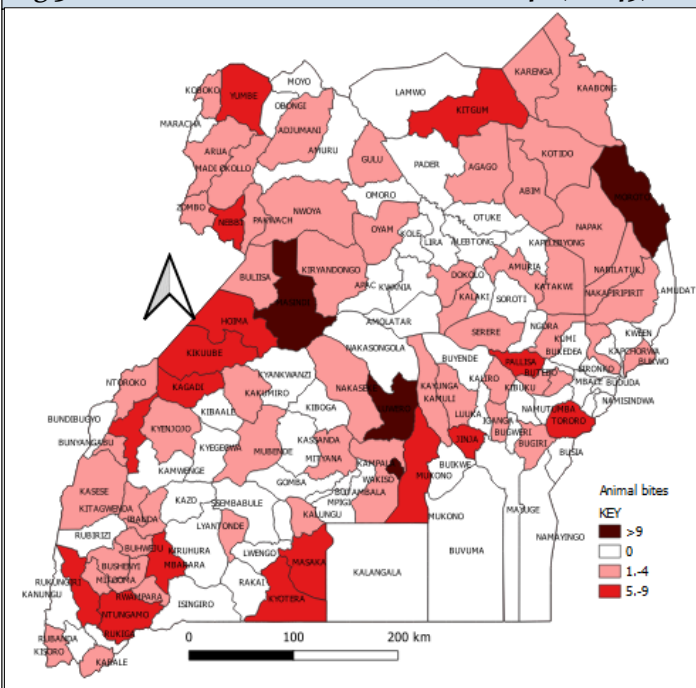
Fig 2b. Distribution of health workers by time May-Nov 2020 (n=1144)



Suspected Rabies (Animal Bites)

- Animal bites reported across the country
- Moroto (18) reported the highest number of bites

Fig 3: Distribution of Animal bites, week 46 (n=249)



Tuberculosis (TB), week 46

Fig 4a : Fig 4a Statistics Uganda Prison Services (UPS)

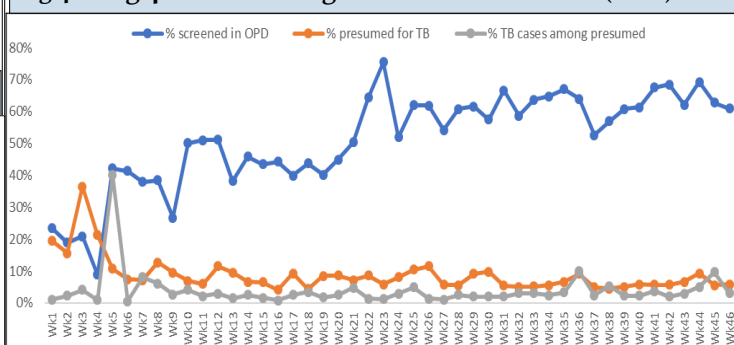
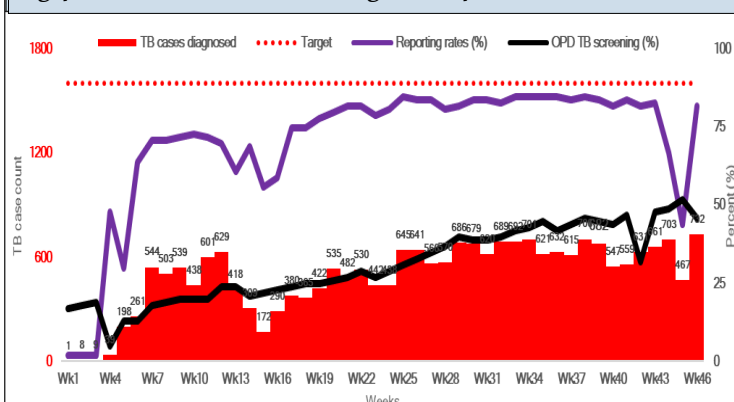


Fig 4b : National TB case finding, week 46



Priority Diseases

The data presented in table 1 consists of suspected cases. The data shows high numbers of water borne diseases such as; typhoid, Malaria, and cholera, dysentery in different parts of the country.

Tab 1: Suspected Cases of epidemic prone Diseases, wk 46

Conditions	Cases	Deaths	CFR(%)
AFP	15	0	0.0
AEFIs	3	0	0.0
Animal bites	249	0	0.0
Bacterial Meningitis	2	0	0.0
Cholera	2	0	0.0
Guinea Worm	0	0	0.0
Malaria	178,114	29	0.1
Hepatitis B	88	0	0.0
Measles	42	0	0.0
NNT	0	0	0.0
Plague	0	0	0.0
Other Suspected VHF's	1	0	0.0
SARI	118	0	0.0
Typhoid fever	1782	0	0.0
Yellow fever	0	0	0.0
Anthrax	0	0	0.0
Leprosy	3	0	0.0
RR T.B	2	0	0.0
Brucellosis	80	0	0.0
HAT	0	0	0.0
Infuluenza (All subtypes)	25		

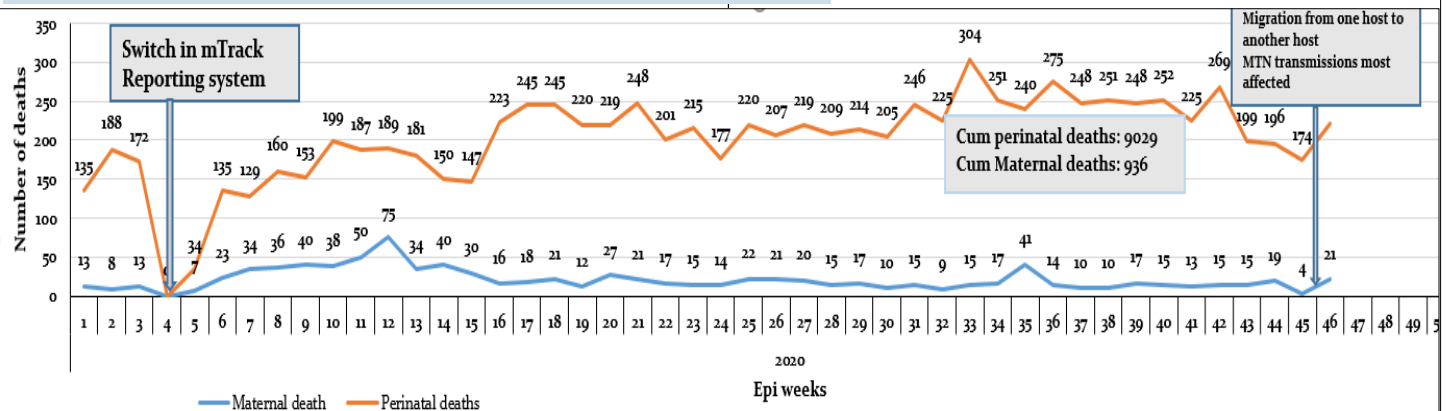
Data source: DHIS2

Severe Acute Respiratory Infection (SARI), Viral Haemorrhagic Fevers (VHF), Neonatal Tetanus (NNT), Tuberculosis (T.B), Acute Flaccid Paralysis (AFP), Adverse Events Following Immunisation (AEFI), Human African Tripanosomiasis (HAT)

Measles (Confirmed cases)

- Cumulatively, Eighty five (85) districts have detected and investigated at least one suspected measles case.
- 39/86 districts reporting measles cases have had at least one positive IgM case

Fig 6. Trends of maternal and perinatal deaths week 1– 46, 2020



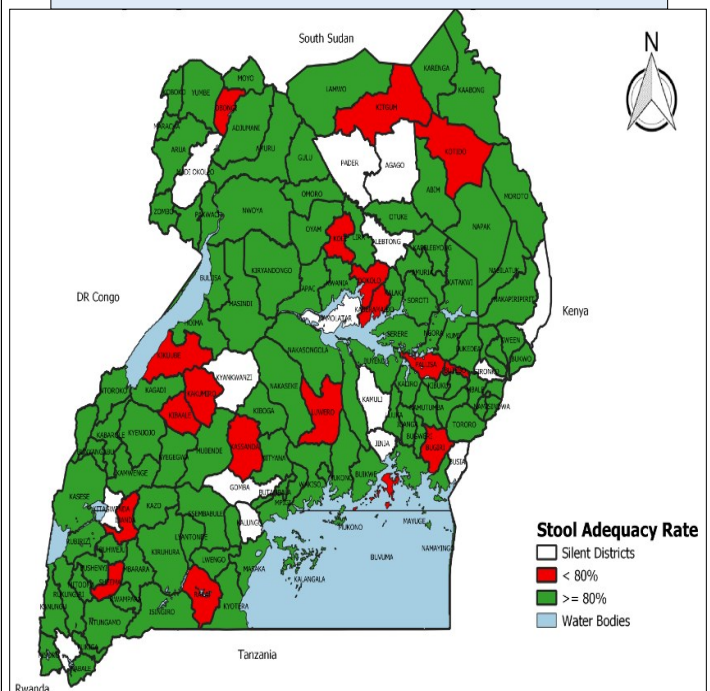
Data source: EPI lab

Data source: DHIS2

Acute Flaccid Paralysis (AFP) Surveillance

- The 15 AFP cases were reported from; Adjumani 1, Bududa 2, Bugweri 1, Butambala 1, Butebo 1, Buvuma 1, Kagadi 1, Kalaki 1, Kamwenge 1, Katakwi 1, Kitgum 1, Maracha 1, Nakaseke 1 and Sheema 1
- The Non-polio AFP rate is 1.61/100,000 children 0 - 14 years compared with 2.59/100,000 last year
- The adequate samples collection rate is 91.98% compared with 90.46% in 2019
- NPENT rate is 11.91% compared with NPENT rate of 15.00% in 2019
- Silent districts; Agago, Amudat, Amolatar, Alebtong, Busia, Gomba, Jinja, Kalungu, Kitagwenda, Kamuli, Kyankwanzi, Madi Okollo, Pader, Rubanda, and Sironko

Fig 5: Stool adequacy rates by District, week 46

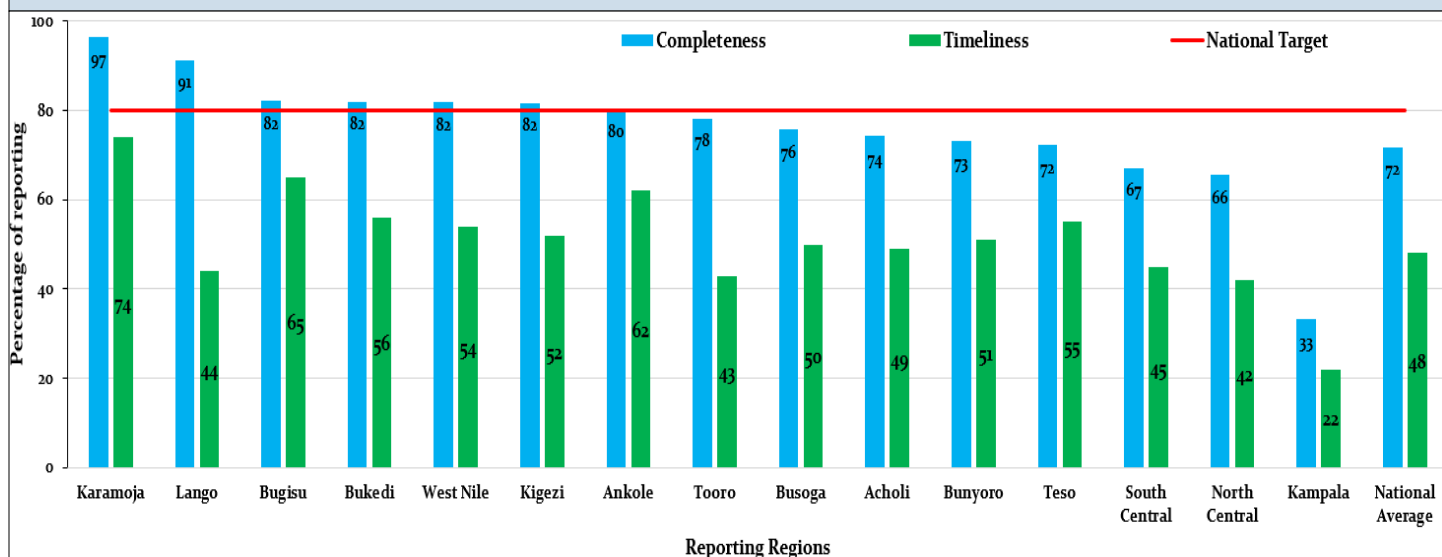


Stool Adequacy Rate
 □ Silent Districts
 ■ < 80%
 ■ >= 80%
 ■ Water Bodies

Table 2: Distribution of maternal deaths (21) and perinatal deaths (221), week 46

District	Name of HF	Maternal deaths	District	Macerated Still births - Deaths	District	Fresh Still Birth	District	Early Neonatal deaths (0-7 days)
Lira	Lira RRH	3	Kampala	7	Kampala	15	Kampala	12
Mbale	Mbale RRH	3	Kayunga	4	Lira	5	Lira	5
Hoima	Hoima RRH	2	Masaka	3	Iganga	4	Masaka	5
Kampala	Kawempe NRH	1	Pakwach	2	Gulu	4	Hoima	4
	Nsambya Hosp	1	Mbale	2	Mbale	3	Gulu	4
Iganga	Iganga Hosp	1	Oyam	2	Zombo	3	Rukungiri	4
Oyam	Aber	1	Mayuge	2	Busia	3	Koboko	3
Kabale	Kabale RRH	1	Zombo	2	Jinja	3	Agago	3
Bududa	Bududa Hosp	1	Busia	2	Kotido	2	Kitgum	3
Gulu	St Mary's Lacoh	1	Kabale	2	Apac	2	Mubende	3
Ntungamo	Kitwe HC IV	1	Hoima	2	Rakai	2	Mbale	2
Kasese		1	Kanungu	2	Mayuge	2	Buliisa	2
Kagadi	Kagadi Hosp	1	Bududa	2	Nebbi	2	Bushenyi	2
Agago	Kalongo Hosp	1	Gulu	2	Kapchorwa	2	Kagadi	2
Masaka	Masaka RRH	1	Bushenyi	2	Luwero	2	Kabarole	2
Wakiso	Watubba HC III	1	Kasese	2	Mubende	2	Kyotera	1
			Kagadi	2	Kyotera	1	Isingiro	1
			Koboko	2	Pakwach	1	Kamwenge	1
Key			Tororo	2	Napak	1	Rukiga	1
	Above threshold		Others	20	Others	22	Others	14

Fig 7: Completeness and Timeliness of weekly reporting per region, Epi week 46, 2020



- Seven regions achieved the national target of completeness of reporting with the highest reporting rates recorded in Karamoja (97)
- National average reporting rate increased to 72% in week 46 from 41% in week 45
- Timeliness is still a challenge across the country.
- None of the reporting regions achieved the national target. National average timeliness of reporting was 48%

Completeness and Timeliness of reporting by District

- There is a great improvement in completeness of reporting across all Districts (fig 8a)
- Majority of the districts reported late (fig 8b)

Fig 8a: Completeness of reporting, week 46, 2020

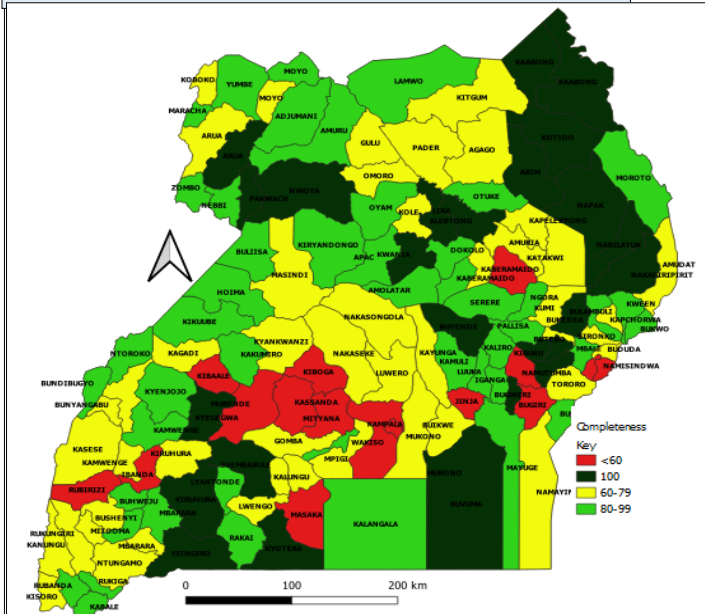


Fig 8b: Timeliness of reporting, week 46, 2020

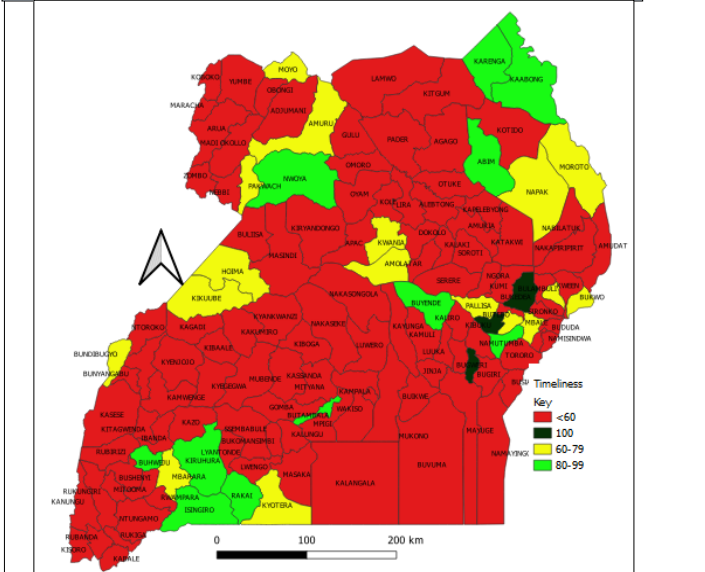
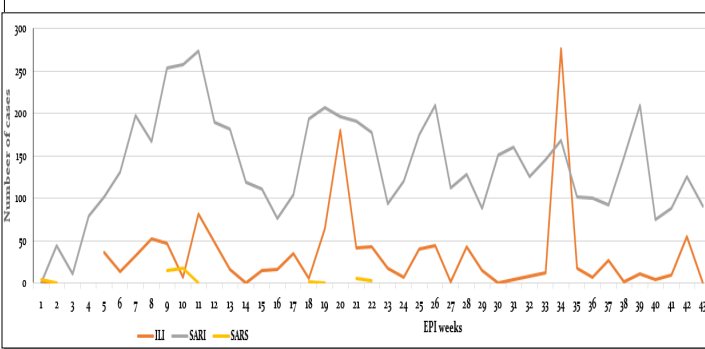


Fig 9: Trends of suspected SARI, ILI and SARS 2020



Public health emergencies in neighboring countries

Country	Condition	No. of Cases	No. of deaths
DRC	Cholera	16043	253
	COVID 19	11051	303
	EVD	128	53
	Measles	70899	1026
	Monkey pox	4594	171
	Plague	124	17
	Poliomyelitis (cVDPV2)	159	0
Kenya	Cholera	711	13
	COVID 19	44881	832
	Leishmania	293	7
	Measles	529	2
Rwanda	COVID 19	4974	34
TZ	COVID 19	509	21
South Sudan	COVID-19	703793	18471
	Hepatitis E	337	2
	Measles	916	2

Recommendations

- Veterinary officers at all levels are encourage to sensitize communities on how to handle dogs. Owners of dogs should be sensitized to vaccinate their animals
- UNEPI reminds and encourages all the districts to carry out active search for AFP, NNT, EAFI and measles cases .
- Maternal deaths and perinatal deaths audits should be conducted to address these deaths
- MoH is dedicated to providing relevant COVID-19 PPE and therefore encourages all HWs to adhere to SOPs

Acknowledgement

- MOH acknowledges all efforts made by all districts and health facilities in surveillance activities

Editorial team :

Allan Muruta, Carol Kyoziira, Godfrey Bwire , David Mwanguzi, Opolot John, Anne Nakinsige, Eldard Mabumba, Benard Lubwama, Leocadia Kwagonza, Harriet Mayinja, Specioza Katusiime, Maureen Nabatanzi, Apolo Ayebale, Freda Aceng, Godfrey Ekuka, Beatrice Chemisto, Turyahabwe Kenneth, Emma Arinaitwe, Job K., Robert Kato, Joyce Nguna, Milton Wetaka, Joshua Kayiwa, Jayne Tusiime.

Remember, your feedback is important to us.