







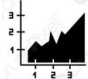



# MINISTRY OF HEALTH, UGANDA

## Weekly Malaria Report



EPI WEEK 36 | 4th Sep to 10th Sep 2023 | KEY HIGHLIGHTS

### HIGHLIGHTS

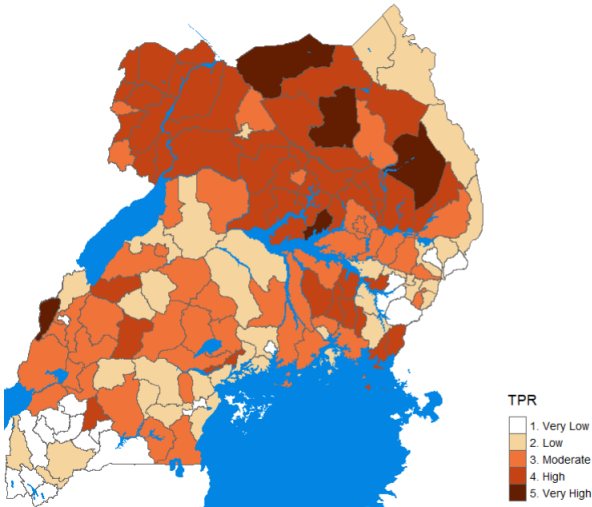
 <b>71.5%</b> Reporting rate	 <b>156,046</b> Confirmed Malaria Cases	 <b>17.1% (25)</b> Districts had inadequate ACT stock (<8 weeks)
 <b>19</b> Reported deaths	 <b>12</b> Districts in IMT Response Mode	 <b>37.7% (55)</b> Districts had inadequate RDT stock (< 8 weeks)
 <b>45.7%</b> Test Positivity Rate	 <b>0</b> Districts in district response	

Testing Rate for patients with fever was 96.6% (289,119) | Proportion treated with a negative test was 3.4% (4,642)  
 Proportion treated without testing was 1.9% (2,808) | Proportion treated with positive result was 89.4% (142,748)

### SUMMARY OF KEY INDICATORS OVER THE LAST 4 WEEKS

Week	Reporting rate	Confirmed Cases	Test Positivity Rate	Reported Deaths	Epidemic Action			% districts with inadequate ACTs	% districts with inadequate RDTs
					Alert	District response	IMT response		
33	78.7	184,588	47.5	17	3	3	12	21.9	38.4
34	86.3	186,103	47.4	34	3	3	12	18.5	37.8
35	88.7	178,309	46.2	36	3	3	12	13.7	38.4
36	71.5	156,046	45.7	19	5	0	12	17.1	37.7

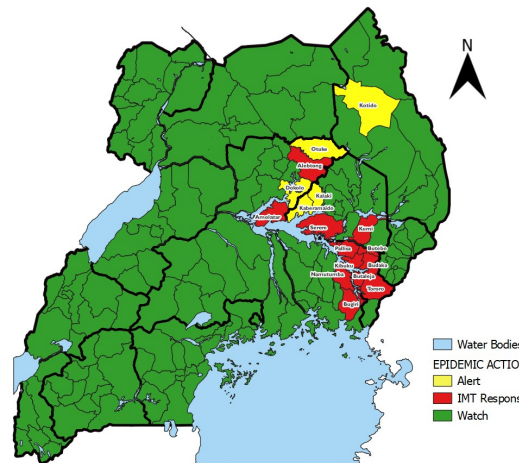
### TEST POSITIVITY RATES



Test positivity rate is 45.7% this week compared to 46.2% in week 35. TPR range was between 6.6% to 76.3%.

The top 10 districts with the highest Test positivity rates reported are:  
**Lamwo (76.3%), Kaberamaido (74.4%), Agago (73.9%), Bundibugyo (73.0%), Pader (69.7%), Arua (68.7%), Oyam (67.8%), Madi-Okollo (67.7%), Otuke (66.9%), Alebtong (66.8%)**

### MALARIA EPIDEMIC ALERT & RESPONSE DISTRICTS



**Alert districts: 5** - Otuke, Dokolo, Kalaki, Kaberamaido, Kotido

**District response: 0**

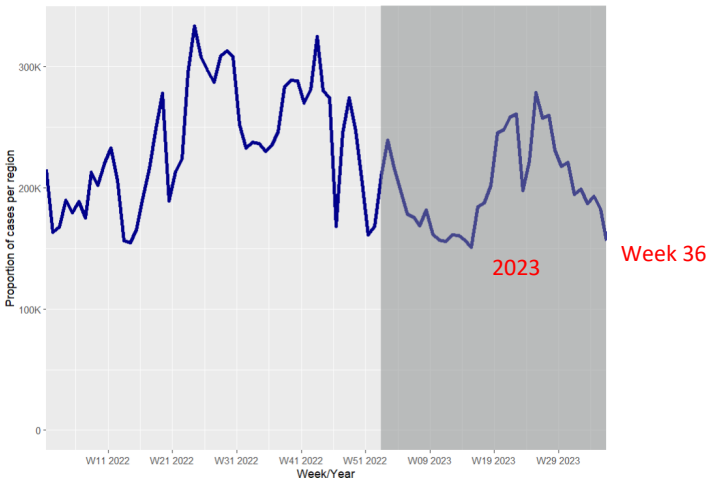
**IMS response: 12**  
 Tororo, Bugiri, Butaleja, Budaka, Butebo, Pallisa, Kibuku, Serere, Kumi, Alebtong, Amolatar, Namutumba

**Watch districts: 129**

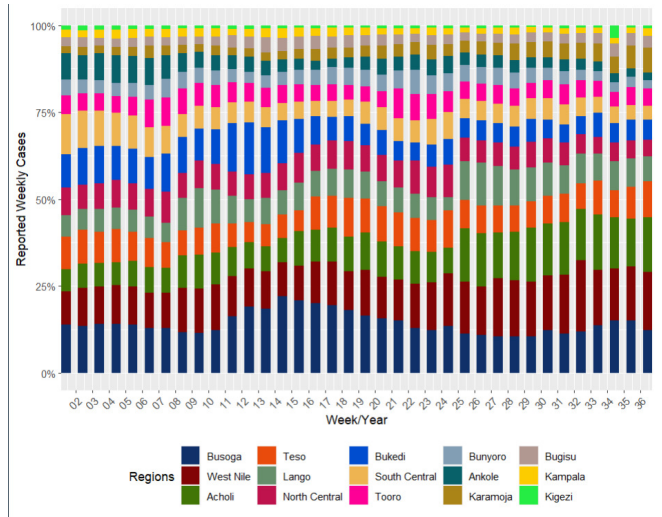
NB:

Watch districts have cases < median (50th percentile) of the baseline |  
 Alert districts have cases >50th percentile but < 75th percentile |  
 District response have cases >75th percentile for <4 weeks or focal areas affected.  
 IMS response have cases >75th percentile for >4 weeks and many sub counties are affected.

**Tororo, Bugiri, Butaleja, Budaka, Pallisa, Namutumba and Butebo remain with cases above epidemic threshold, BUT after IRS + other interventions, progress has been made compared to week 12. For example, Mean TPR from 62.6% to 27.7% and OPDburden from 42.8% to 23.8%**



From the beginning of the year 2023, the country experienced reducing cases. After week 15, cases started rising to week 25. Cases are now falling after the peak of the 1st transmission season.

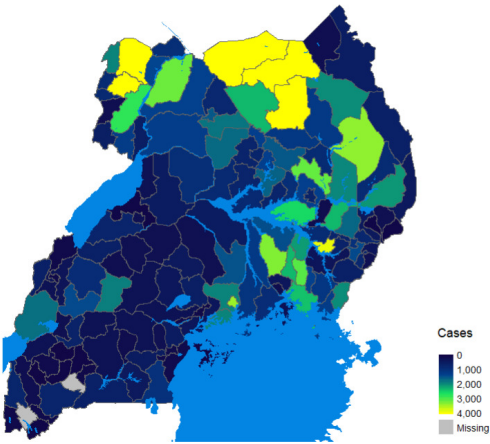


Top 5 regions with most cases for Week 36 are from **West Nile (16.7%), Acholi (15.8%), Busoga (12.2%), Teso (10.4%), Karamoja (7.2%)**

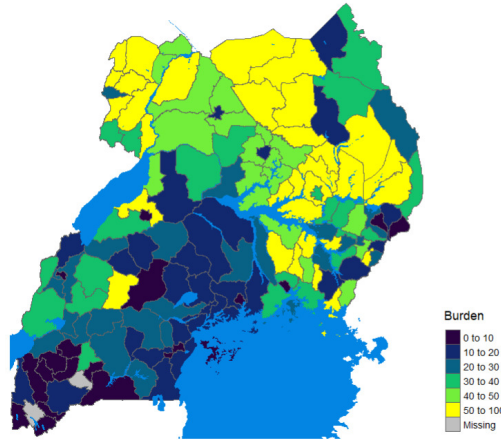
DISTRIBUTION OF CASES BY DISTRICT

OPD BURDEN (%)

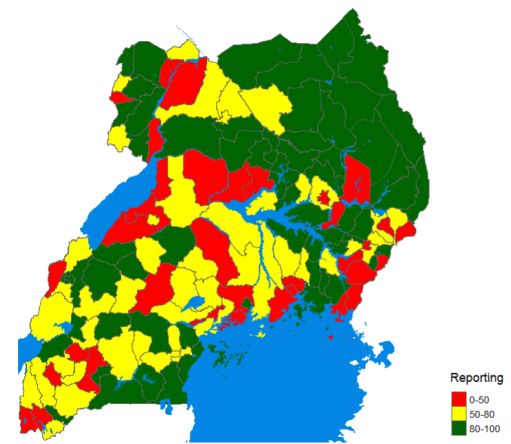
REPORTING RATE



Top 10 districts reporting the most cases this week are: Yumbe (6,601), Lamwo (5,870), Agago (5,527), Terego (5,086), Kitgum (4,254), Kibuku (3,867), Kampala (3,406), Napak (3,335), Kamuli (3,272), Adjumani (3,152)



The average OPD burden for the week was 30.0%. Highest in Teso (63.2%), Acholi (51.7%), West Nile (47.5%), Karamoja (45.3%), Lango (42.7%) regions. Top 10 highest OPD burden districts are: **Nakapiripirit, Lamwo, Napak, Agago, Madi-Okollo, Manafwa, Namayingo, Nabilatuk, Otuke, Luuka**

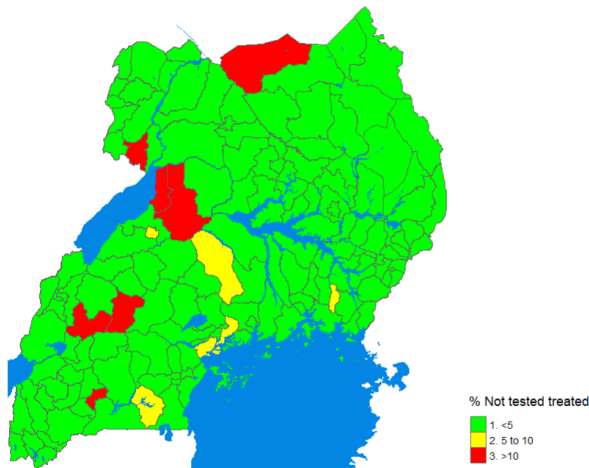


Most districts, 43.2% (63) posted a reporting rate above 80%. Forty eight districts, 32.9% reported between 50 to 80%. Twenty four districts, 24% posted a reporting rate below 50% this week. **5707 facilities reported this week. Facilities not reporting on Cases 49.1% (2,800) Deaths 99.7% (5,692) Fever 46.1% (2,632) RDTs 59% (3,366) ACTS 56% (3,194)**

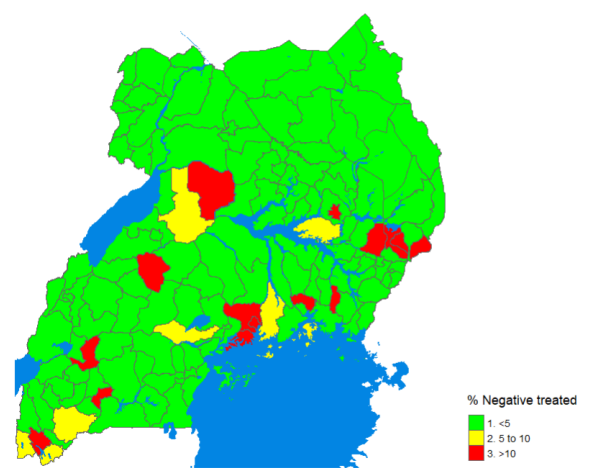
TEST AND TREAT PERFORMANCE BY DISTRICT

Districts reporting cases treated with no malaria test

Districts reporting cases treated with a negative malaria test



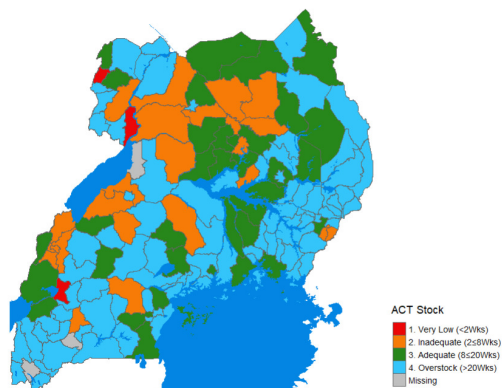
Top 5 districts with highest % treated with no test are: **Buliisa (70.9%), Kyegegwa (42.2%), Nebbi (21.9%), Mbarara City (20.6%), Kamwenge (18.4%)**



Top 5 districts with highest % treated with negative test are: **Bukwo (49.6%), Wakiso (39.8%), Soroti City (31.5%), Kampala (22.4%), Kakumiro (21.6%)**

## ACT AVAILABILITY IN THE DISTRICTS

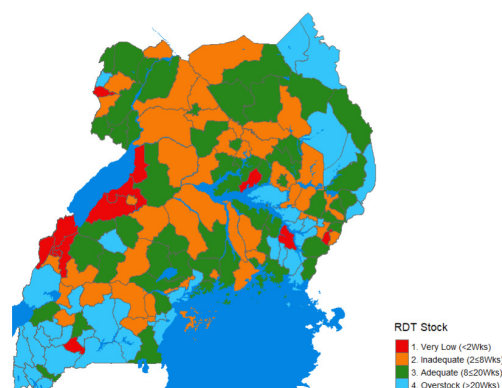
## RDT AVAILABILITY IN THE DISTRICTS



Twenty five, (17.1%) districts had inadequate ACT stock.

Two districts with < 2 weeks of stock are:

**Kitagwenda(0), Maracha (0), Pakwach (0).** Eighty two, (56.2%) districts reported overstock of ACTs. Three districts (Rubanda, Buliisa, **Rwampara**) did not report.



Fifty five, (37.7%) districts had inadequate RDT stock. Twelve districts

with < 2 weeks of RDT stock include: **Ntoroko (0), Manafwa (0),**

**Kaberaimaido (0), Kikuube (0), Hoima (0), Bundibugyo (0), Arua**

**City (0), Buliisa (0), Rwampara (0), Fort Portal City (1), Kabarole**

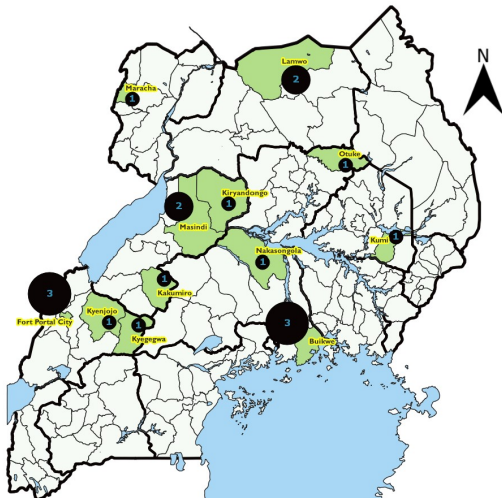
**(1), Namutumba (1)** Thirty eight, (26.0%) districts reported overstock

of RDTs.

**All districts that have  $\leq 2$  weeks of stock for any commodity, REQUIRE immediate support. Districts with an asterisk (\*), report less than 1 week of commodities. Emphasis should be on districts in epidemic alert and response mode, and those reporting the most cases of Malaria.**

## MALARIA REPORTED DEATHS

Highest deaths are reported from the following districts



District	Health Facility	Death
Fort Portal City	Fort Portal Regional Referral Hospital	3
Buikwe	Nkokonjeru Hospital	3
Lamwo	Padibe Health Centre IV	2
Masindi	Masindi General Hospital	2
Otuke	Orum Health Centre IV	1
Kyenjojo	Midas Torch Health Centre IV	1
Yumbe	Yumbe Health Centre IV	1
Kakumiro	Kakindo Health Centre IV	1
Kiryandongo	Panyadoli Health Centre IV	1
Kumi	Atatur General Hospital	1
Kyegegwa	Bujubuli Health Centre IV	1
Maracha	Kijomoro Health Centre III	1
Nakasongola	St. Franciscan Health Centre	1

### Recommendations

- Case management & PSM to ensure commodities for test and treat are available. The rains are back and risk of upsurges are high.
- PSM with support of case management team to continue following up on over stocked districts & facilities to verify overstocks and plan redistribution of excess ACTs and RDTs.
- SBCC team to continue risk communication messaging in the face of the heavy rains, early testing and treatment and completion of treatments etc.
- SMEOR teams to work closely with district teams to ramp up surveillance, and ensure complete and timely reporting.
- Case management to follow up districts and facilities with low adherence to test and treat policy.
- All efforts (Multi-sectoral) should be geared to support and sustain gains in epidemic districts showing progress to prevent reversal of gains.

#### FOR FURTHER INFORMATION, CONTACT:

Dr. Jimmy OPIGO, Asst Commissioner, NMCD/MOH [opjgojimmy@gmail.com](mailto:opjgojimmy@gmail.com) | Dr. Daniel KYABAYINZE, Director Public Health, MOH [kyabayinzed@gmail.com](mailto:kyabayinzed@gmail.com)  
 Paul MBAKA, Asst Commissioner, DHI/MOH [paul.mbaka@gmail.com](mailto:paul.mbaka@gmail.com) | Dr. Damian RUTAZAANA GF Country Facilitator, MOH [damianamanya@gmail.com](mailto:damianamanya@gmail.com) |  
 Jane Frances ZALWANGO, PHFP [jonalwango@musph.ac.ug](mailto:jonalwango@musph.ac.ug) | Marie Gorreti ZALWANGO, PHFP [mzalwango@musph.ac.ug](mailto:mzalwango@musph.ac.ug) | Dr. Daniel ORIT, NMCD/PHFP [dorit@uniph.go.ug](mailto:dorit@uniph.go.ug)  
 Joel Miti TUTU, Supply Chain Specialist, NMCD, MOH [joelmititutu@gmail.com](mailto:joelmititutu@gmail.com) | Dr. REK John, Surveillance & Epidemiology, NMCD/PHFP [jcedrek@gmail.com](mailto:jcedrek@gmail.com)