



## COVID-19 infections among health workers (n=905) as 1st November 2020

- The criteria for classifying Health Workers (HW) includes all staff involved in direct and indirect provision of care to patients
- These include; Clinicians, Physicians other Allied Health Professionals and auxiliary health workers such as Cleaner, Drivers, laundry personnel, x-ray physicians among others
- 59% of HW cases registered are males
- **Common factors include;** Congregations in workplaces, Non adherence to PPE, use of communal transport, Prolonged Turn around Time among others

Fig 2a: Distribution of HW infections by Age-group

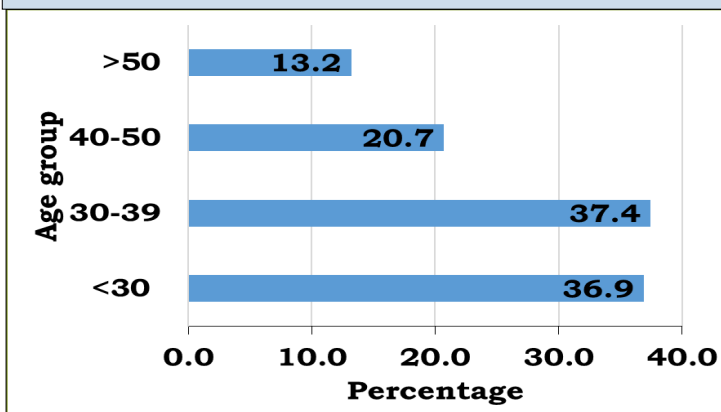
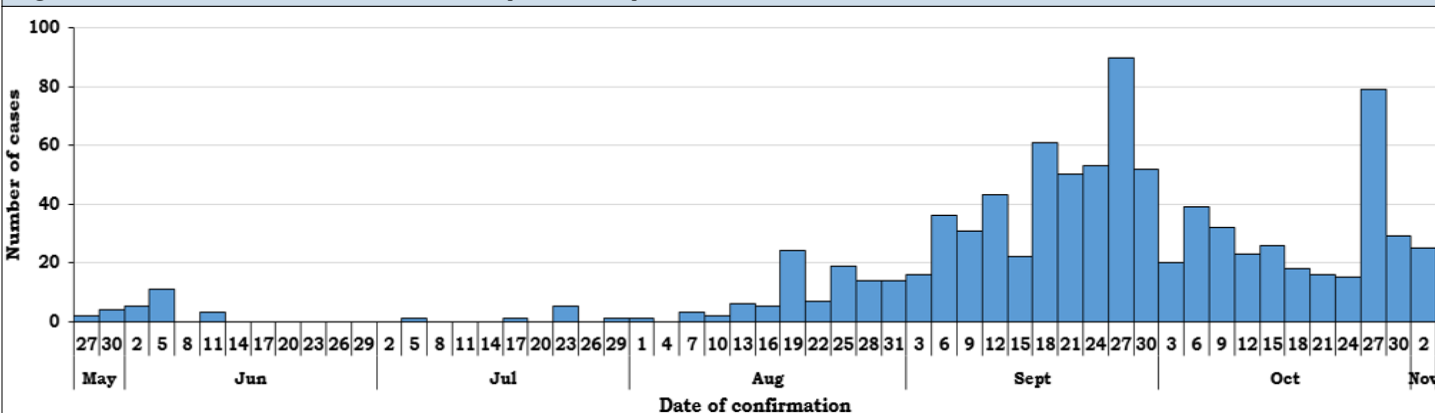


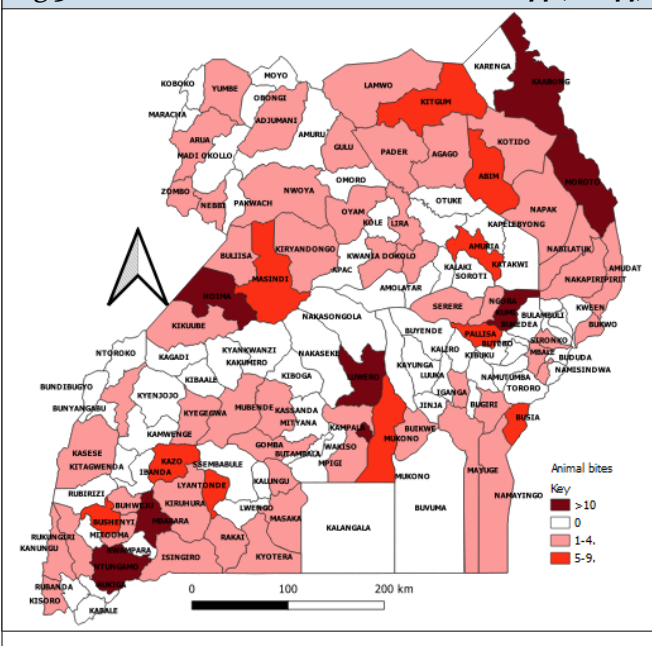
Fig 2b. Distribution of health workers by time May-Oct 2020



## Suspected Rabies (Animal Bites)

- Animal bites reported across the country
- Kampala (21) reported the highest number of bites

Fig 3: Distribution of Animal bites, week 44 (n=144)

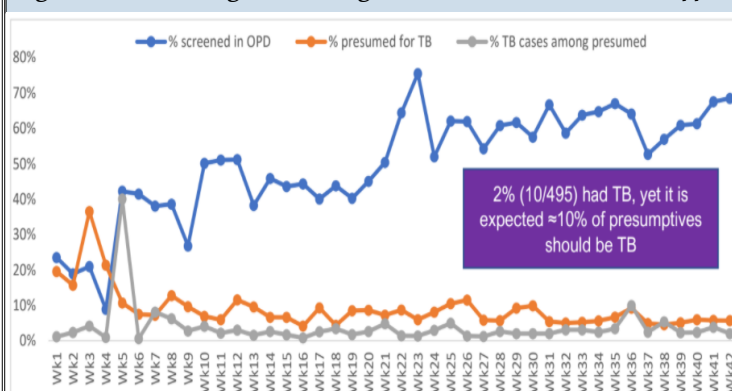


## Tuberculosis (TB), week 44

### Statistics

- National OPD TB screening (%) was 32%
- 39% (631/1607) TB cases diagnosed nationally
- National weekly reporting (%) was 82%,
- TB case diagnosis in the response areas
- 37% (34/92) in Acholi Region,
- 75% (77/102) in Lango Region
- 100%(69/69) in Karamoja Region
- 2%(10/496) among presumptive confirmed in Prisons

Fig : TB case finding cascade Uganda Prison Services, week44



## Priority Diseases

The data presented in table 1 consists of suspected cases. The data shows high numbers of water borne diseases such as; typhoid, Malaria, and cholera, dysentery in different parts of the country.

**Tab 1: Suspected Cases of epidemic prone Diseases, wk 44**

Conditions	Cases	Deaths	CFR(%)
AFP	13	-	-
AEFIs	1	0	0.0
Animal bites	144	0	0.0
Bacterial Meningitis	5	0	0.0
Cholera	5	0	0.0
Guinea Worm	0	0	0.0
Malaria	31488	42	0.1
Hepatitis B	209	0	0.0
Measles	43	0	0.0
NNT	0	0	0.0
Plague	0	0	0.0
Other Suspected	0	0	0.0
VHFs	0	0	0.0
SARI	169	0	0.0
Typhoid fever	935	0	0.0
Yellow fever	0	0	0.0
Anthrax	0	0	0.0
Leprosy	0	0	0.0
RR T.B	9	0	0.0

Severe Acute Respiratory Infection (SARI), Viral Haemorrhagic Fevers (VHF), Neonatal Tetanus (NNT), Tuberculosis (T.B), Acute Flaccid Paralysis (AFP), Adverse Events Following Immunisation

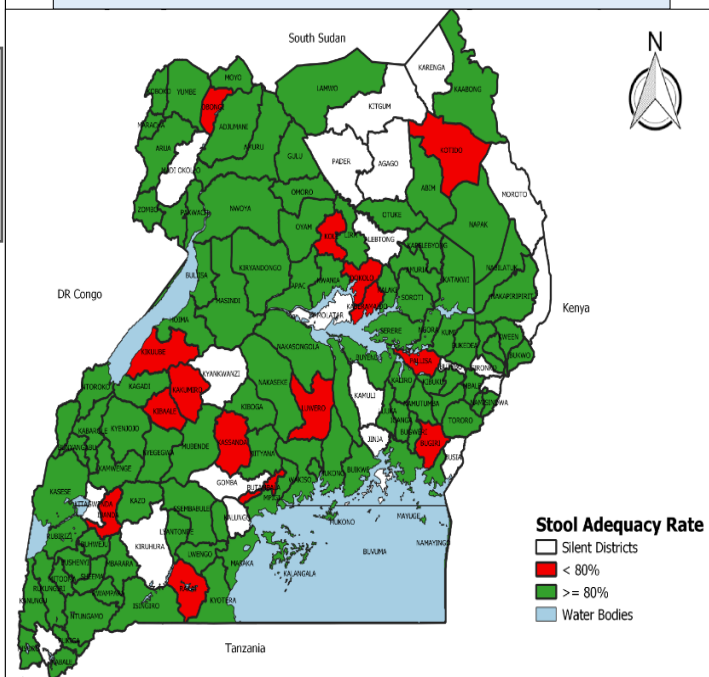
## Measles (Confirmed cases)

- Cumulatively, Eighty five (85) districts have detected and investigated at least one suspected measles case.
- 36/85 districts reporting measles cases have had at least one positive IgM case

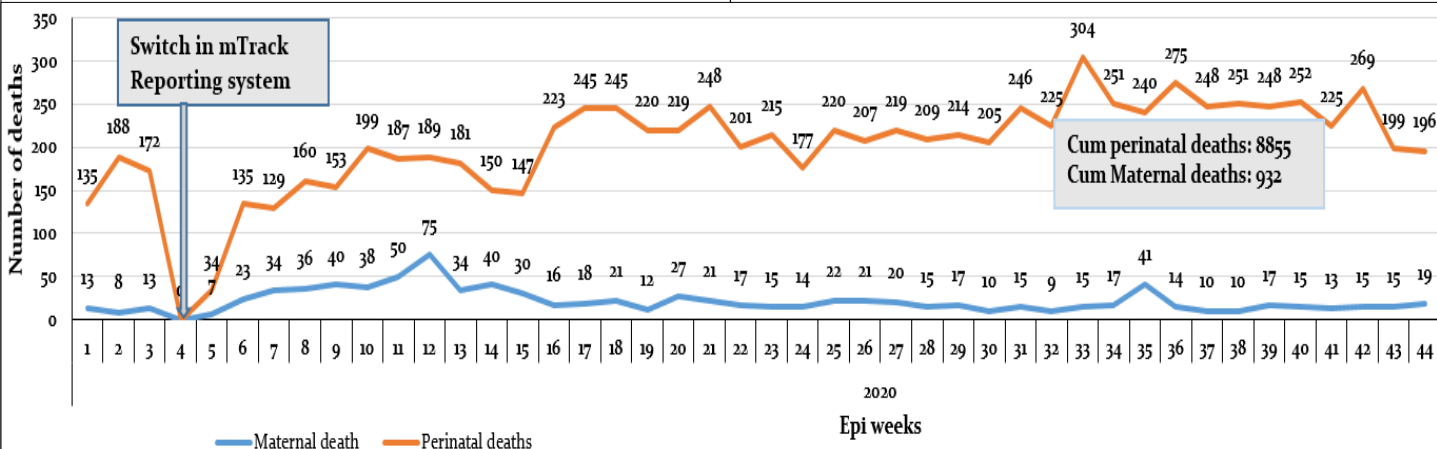
## Acute Flaccid Paralysis (AFP) Surveillance

- The 13 AFP cases were reported from; Kabale 1, Kaberamiodo 1, Kamwenge 1, Kassanda 1, Kyegewa 1, Kyenjojo 1, Nabilatuk 1, Nakaseke 2, Ntungamo 3 and Rakai 1
- The adequate samples collection rate is 92.90% compared with 90.51% in 2019
- NPENT rate is 12.25% compared with NPENT rate of 15.32% in 2019
- A total of 13 AFP cases was reported during week 44 compared with 15 cases reported in week 43
- Silent districts; Agago, Amudat, Amolatar, Alebtong, Butebo, Bududa, Busia, Buvuma, Gomba, Jinja, Kalungu, Karenga, Kitgum, Kitagwenda, Kiruhura, Kamuli, Kyankwanzi, Madi Okollo, Moroto, Pader, Rubanda, and Sironko (fig 5)

**Fig 5: stool adequacy rates by District, week 44**



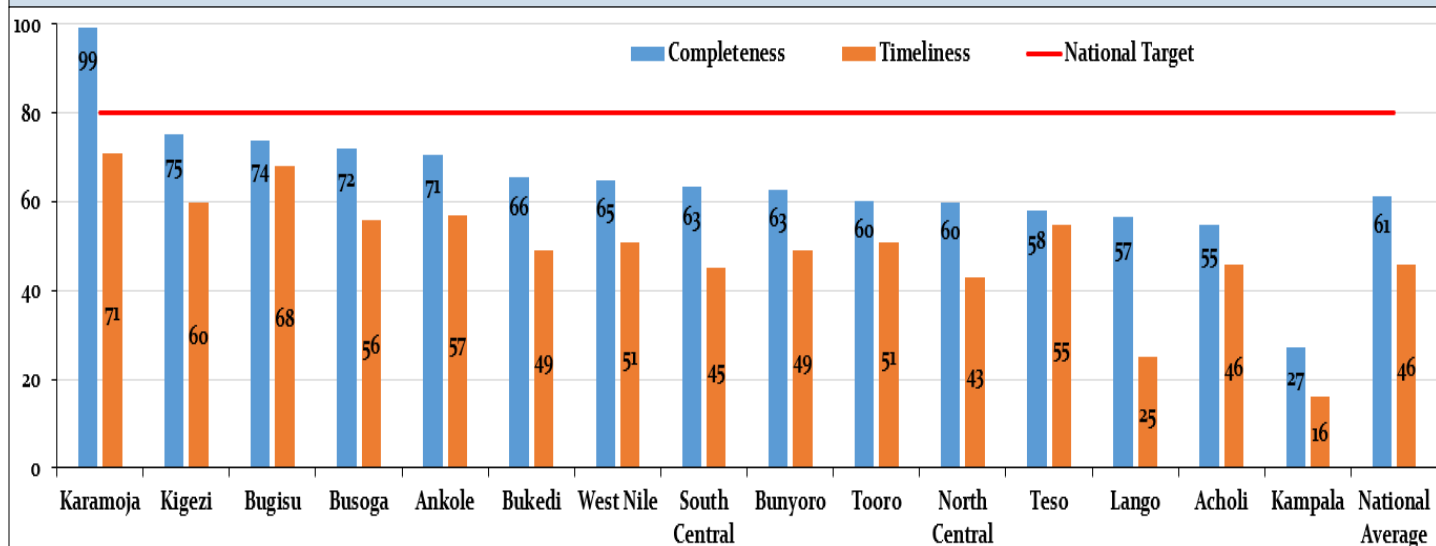
**Fig 6. Trends of maternal and perinatal deaths week 1– 44, 2020**



**Table 2: Distribution of maternal deaths (19) and perinatal deaths (196), week 44**

Districts	Name of HF	Maternal Deaths	Districts	Macerated Still births - Deaths	Districts	Fresh Still Birth -	Districts	Early Neonatal deaths (0-7 days)
Kampala	Kawempe	3	Kampala	12	Kampala	13	Kampala	20
	Kisenyi HC IV	1	Kabarole	4	Iganga	6	Hoima	7
Hoima	Kigorobyia	1	Lira	3	Kasese	4	Bugiri	3
	Hoima RRH	1	Rukungiri	3	Busia	3	Mityana	3
Kitgum	Akuna Laber HC III	1	Kasese	3	Ntungamo	3	Mubende	3
	St. Joseph Hosp	1	Mityana	3	Gulu	3	Lira	2
Yumbe	Yumbe HC IV	1	Kyotera	2	Mityana	3	Iganga	2
Kaabong	Kaabong hosp	1	Iganga	2	Lira	2	Kikuube	2
Iganga	Iganga Hosp	1	Kanungu	2	Mayuge	2	Kabale	2
Busia	Masafu Hosp	1	Buikwe	2	Luwero	2	Agago	2
Kanungu	Kihihi HC IV	1	Nebbi	2	Agago	2	Gulu	2
Ntungamo	Kitwe HC IV	1	Koboko	2	Koboko	2	Kabarole	2
Mpigi	Nkozi Hosp	1	Napak	1	Kassanda	2	Koboko	2
Agago	Kalongo Hosp	1	Mukono	1	Mubende	2	Wakiso	2
Bugiri	Bugiri Hosp	1	Karenga	1	Kyotera	1	Kyotera	1
Kabarole	Fort Portal RRH	1	Rakai	1	Napak	1	Napak	1
Mubende	Mubende RRH	1	Kabale	1	Bukedea	1	Isingiro	1
			Sheema	1	Nabilatuk	1	Kanungu	1
			Ntungamo	1	Mukono	1	Rukungiri	1
			Ohers	12	Others	17	Others	5

**Fig 7: Completeness and Timeliness of weekly reporting per region, Epi week 43, 2020**

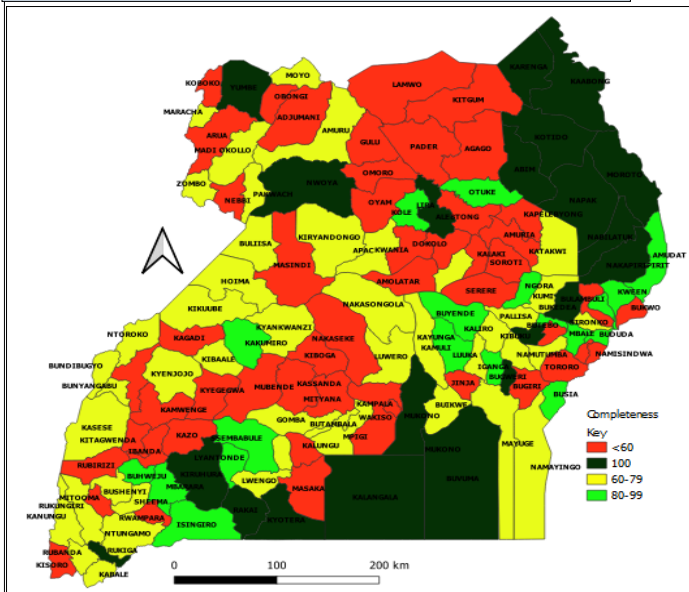


- One region achieved the national target of completeness of reporting with the highest reporting rates recorded in Karamoja (100)
- National average reporting rate declined to 61% in week 44 from 72% in week 43
- Timeliness is still a challenge across the country.
- None of the reporting regions achieved the national target. National average timeliness of reporting was 46%

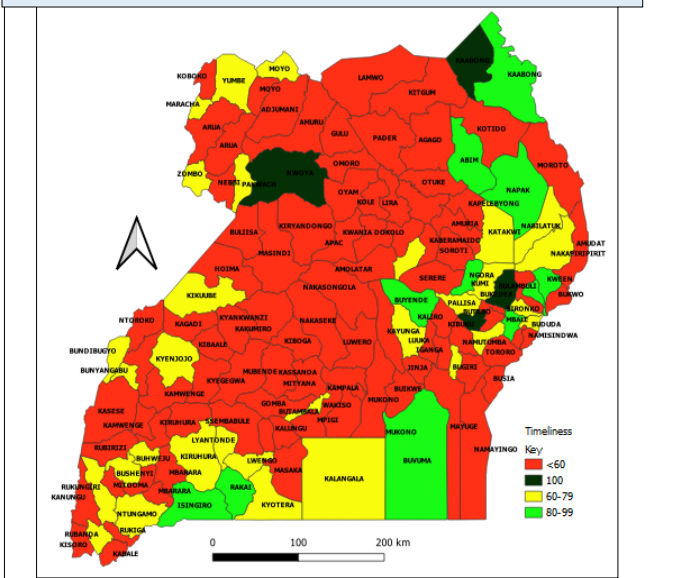
### Completeness and Timeliness of reporting by District

- There is a great improvement in completeness of reporting across all Districts (fig 8a)
- Majority of the districts reported late (fig 8b)

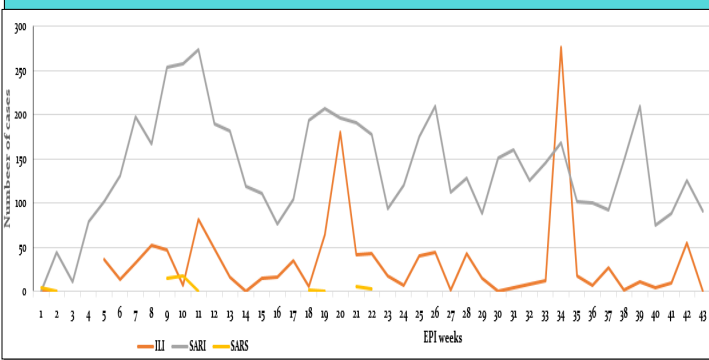
**Fig 8a: Completeness of reporting, week 44, 2020**



**Fig 8b: Timeliness of reporting, week 44, 2020**



**Fig 9: Trends of suspected SARI, ILI and SARS 2020**



### Public health emergencies in neighboring countries

Country	Condition	No. of Cases	No. of deaths
DRC	Cholera	16043	253
	COVID 19	11051	303
	EVD	128	53
	Measles	70899	1026
	Monkey pox	4594	171
	Plague	124	17
	Poliomyelitis (cVDPV2)	159	0
Kenya	Cholera	711	13
	COVID 19	44881	832
	Leishmania	293	7
	Measles	529	2
Rwanda	COVID 19	4974	34
TZ	COVID 19	509	21
South Sudan	COVID-19	703793	18471
	Hepatitis E	337	2
	Measles	916	2

### Recommendations

- Veterinary officers at all levels are encourage to sensitize communities on how to handle dogs. Owners dogs should be sensitized to vaccinate their animals
- UNEPI reminds and encourages all the districts to carry out active search for AFP, NNT, EAFI and measles cases .
- Maternal deaths and perinatal deaths audits should be conducted to address these deaths
- MoH is dedicated to providing relevant COVID-19 PPE and therefore encourages all HWs to adhere to SOPs

### Acknowledgement

- MOH acknowledges all efforts made by all districts and health facilities in surveillance activities

### Editorial team :

Allan Muruta, Carol Kyoziira, Godfrey Bwire , David Mwanguzi, Opolot John, Anne Nakinsige, Eldard Mabumba, Benard Lubwama, Leocadia Kwagonza, Harriet Mayinja, Specioza Katusiime, Maureen Nabatanzi, Apolo Ayebale, Freda Aceng, Godfrey Ekuka, Beatrice Chemisto, Turyahabwe Kenneth, Emma Arinaitwe, Job K., Robert Kato, Joyce Nguna, Milton Wetaka, Joshua Kayiwa, Jayne Tusiime.

**Remember, your feedback is important to us.**